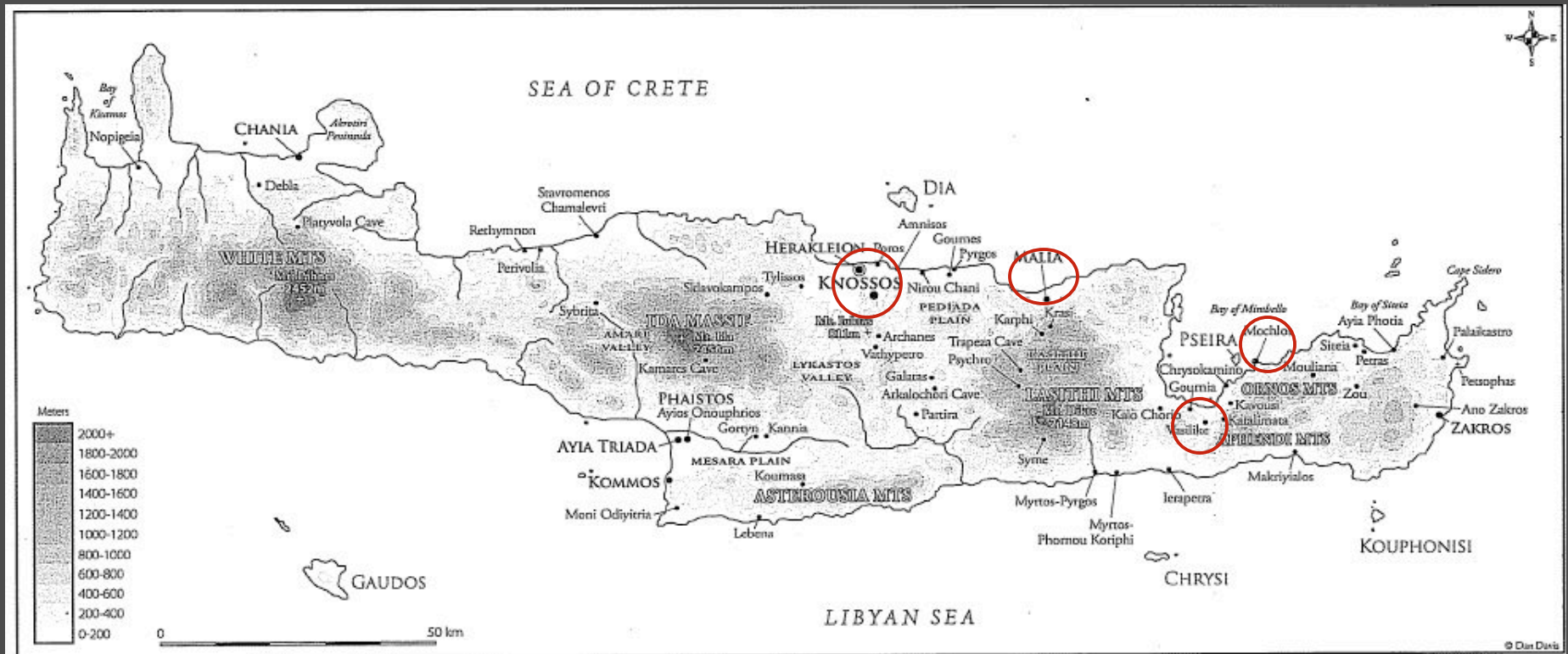


The Protopalatial Period on Crete

“The First Palaces in the Aegean”

Important findspots for MM IA pottery



MM IA pottery: polychromy and barbotine ware



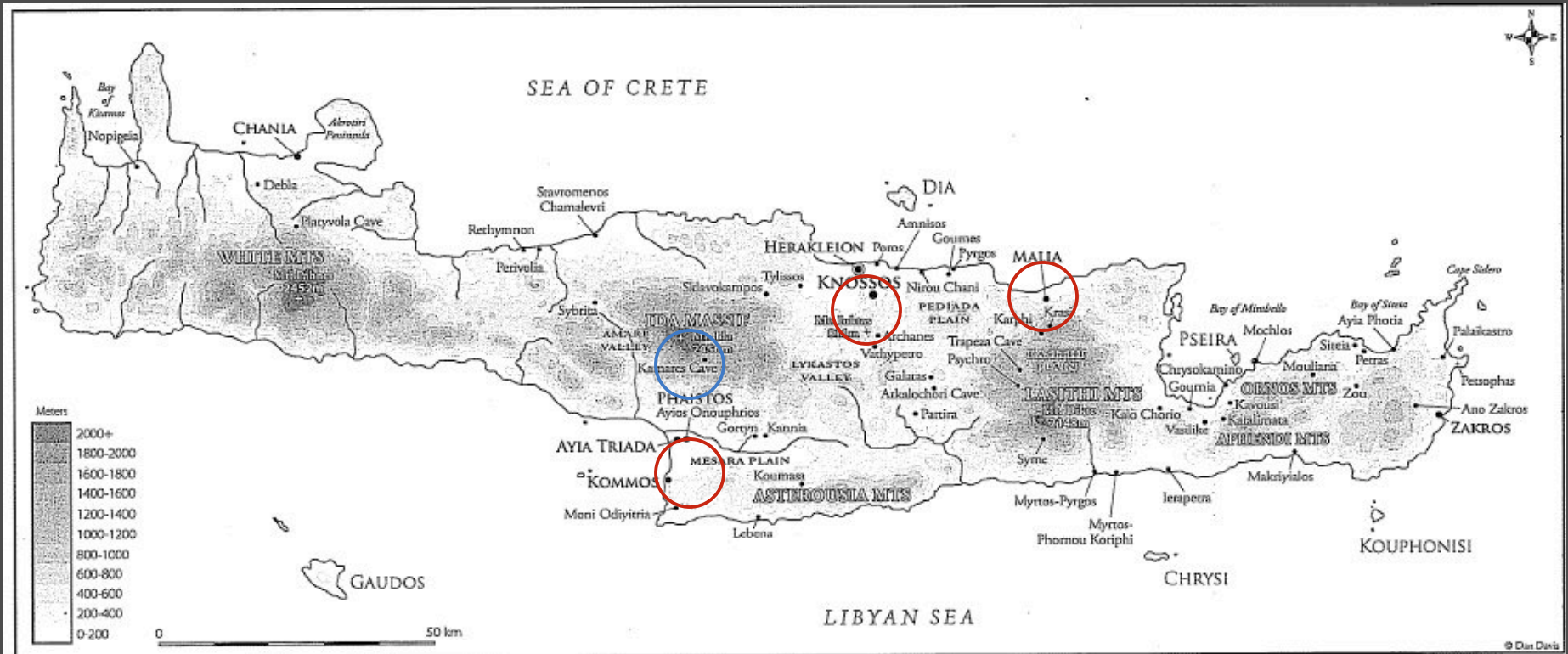
The Cretan Hieroglyphic Script



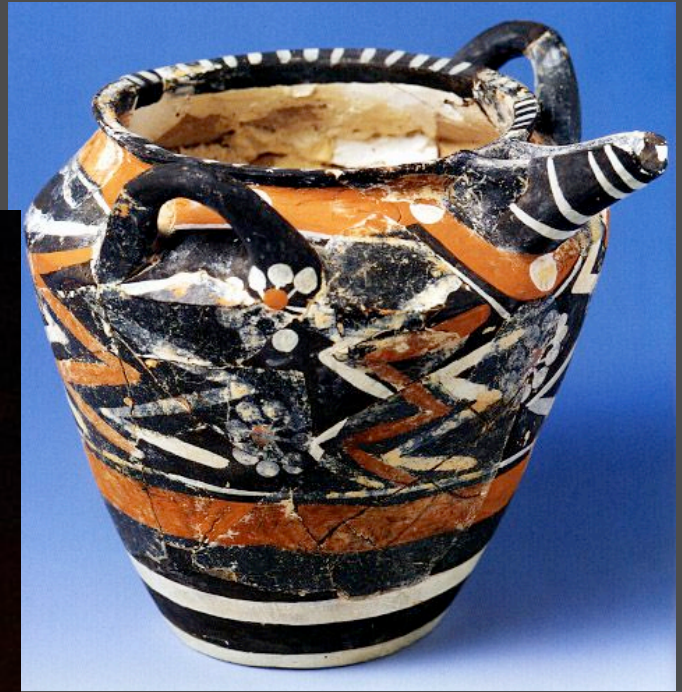
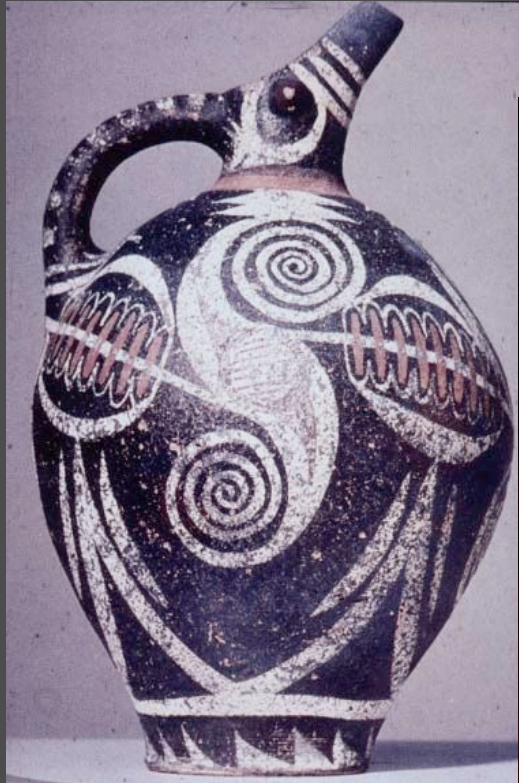
- appears in MM IA
- lasts until MM IIIB
- lifespan of 500-550 years
- usually on seals/sealings
- from Knossos, Phaistos, Mallia, and Petras
- simultaneously used with Linear A (but in different regions)



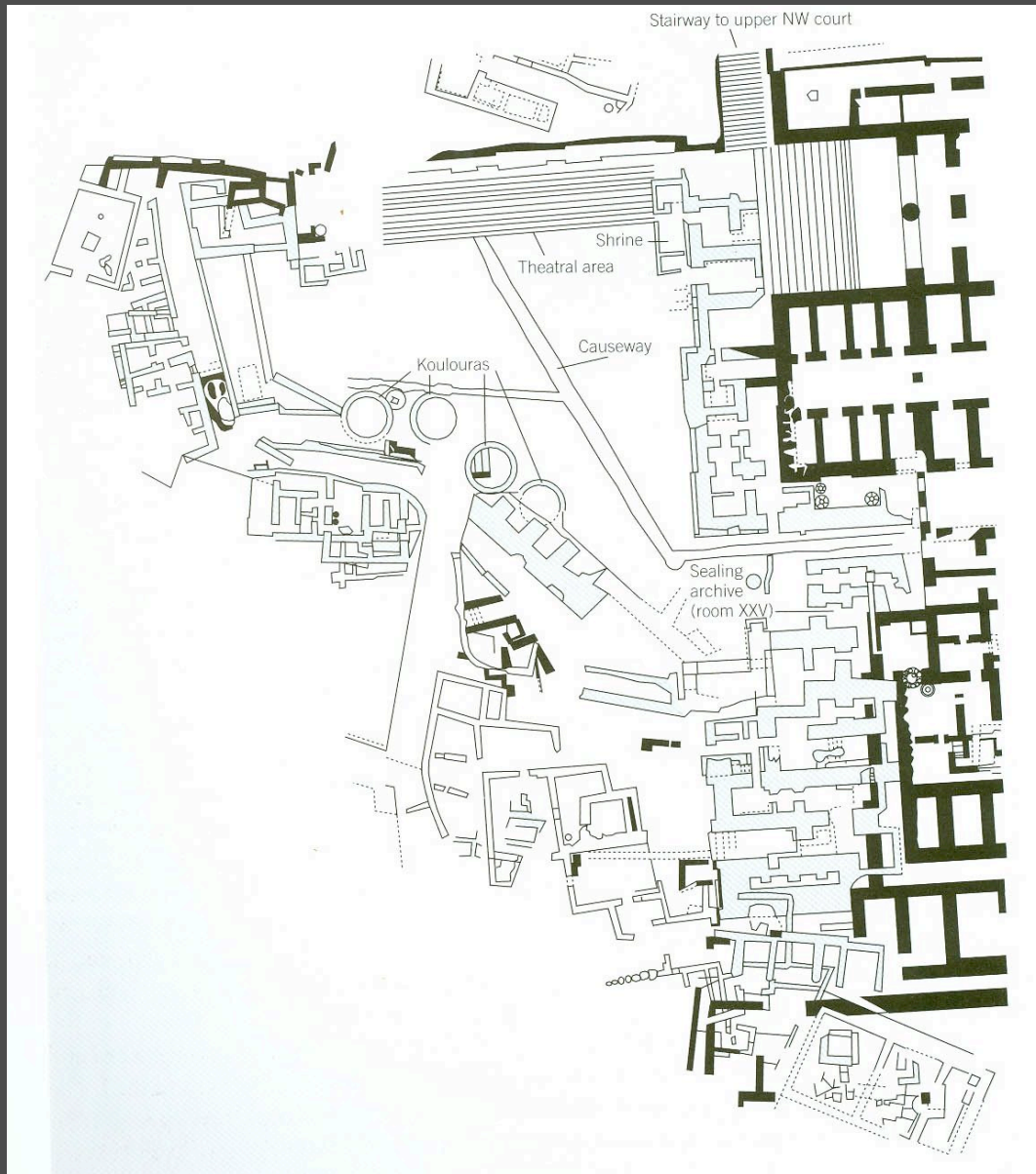
MM IB - The Appearance of the First Palaces:



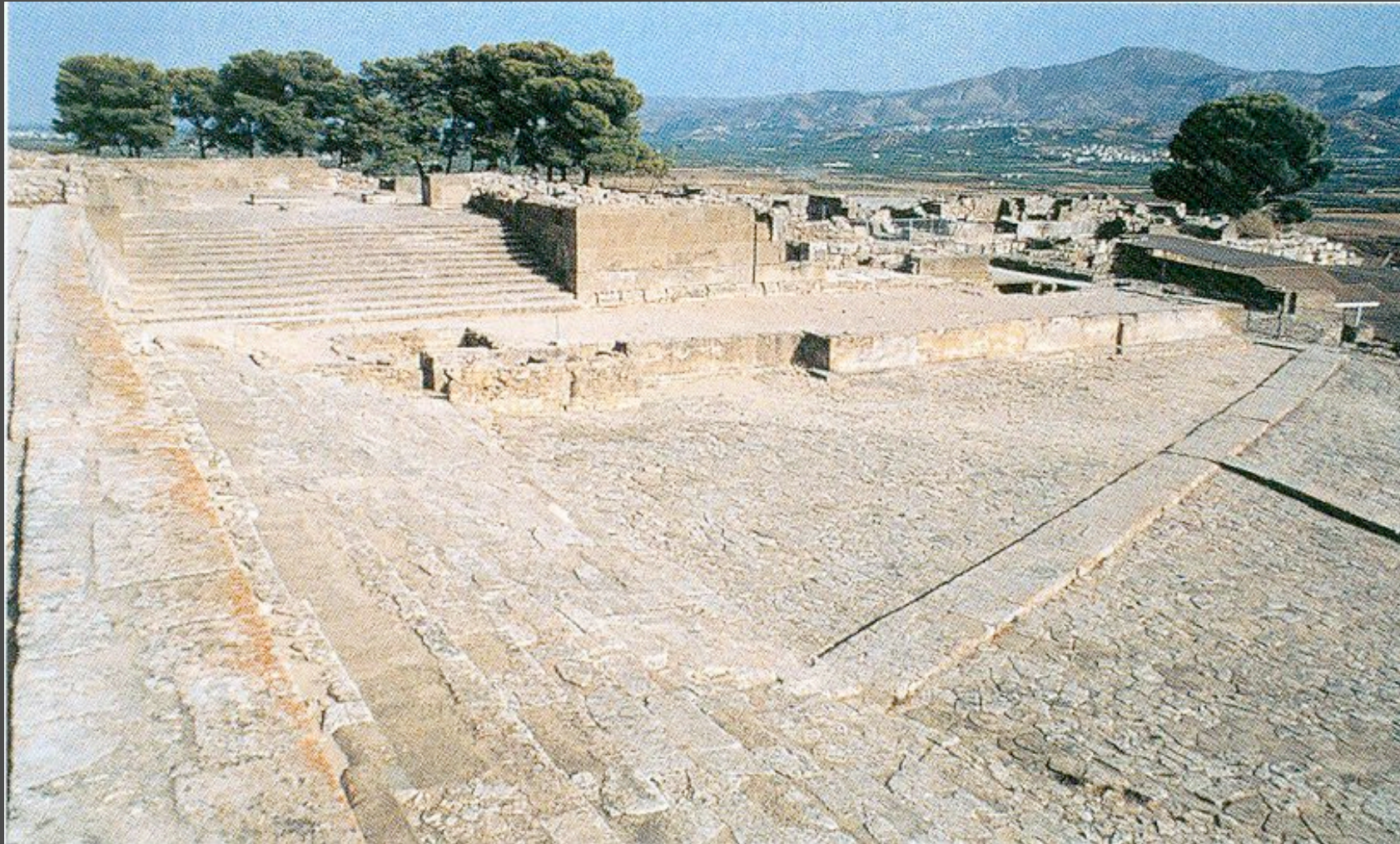
MM IB - beginning of Kamares Ware

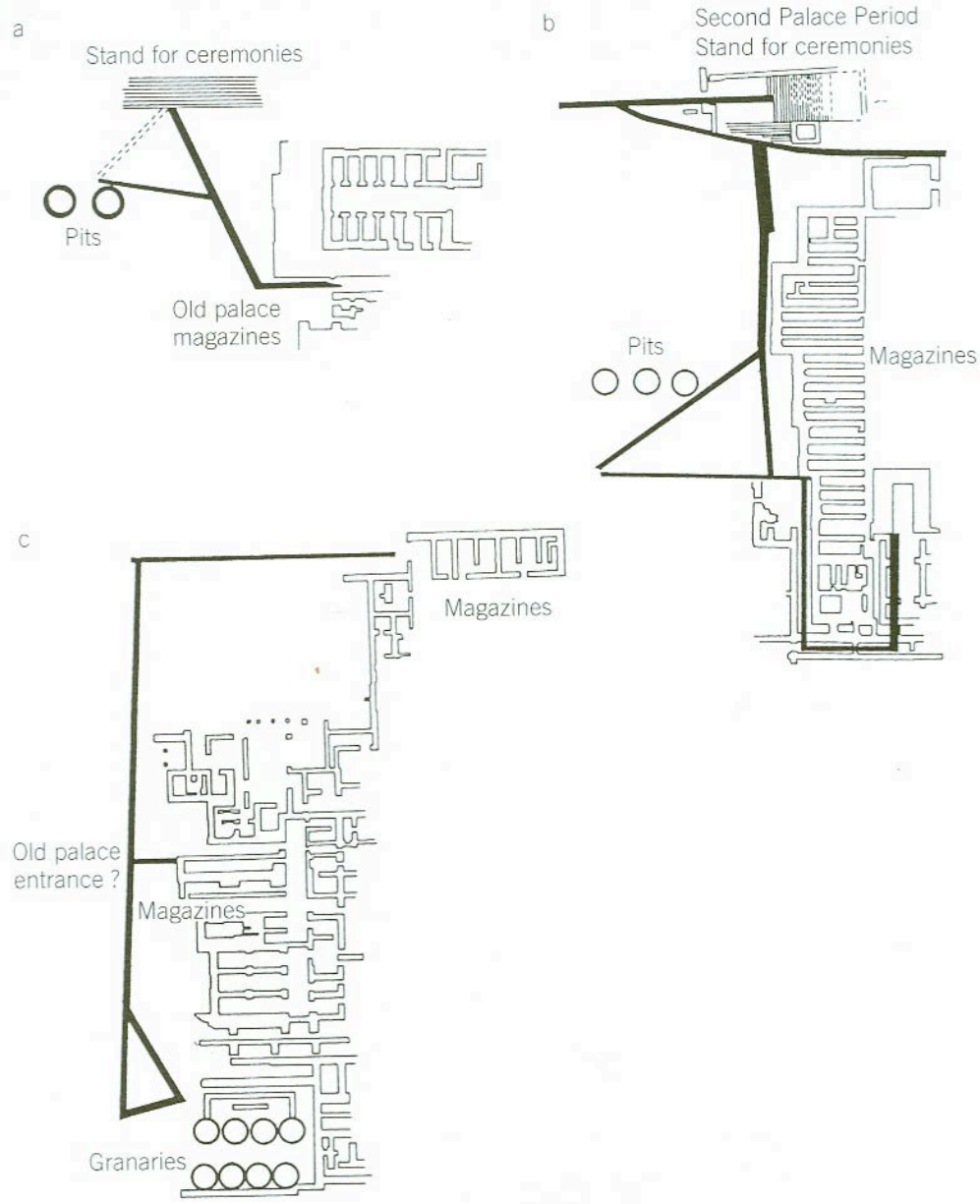


Detailed plan of the west wing, including the cult area, of the First Palace at Phaistos from the MM IB period



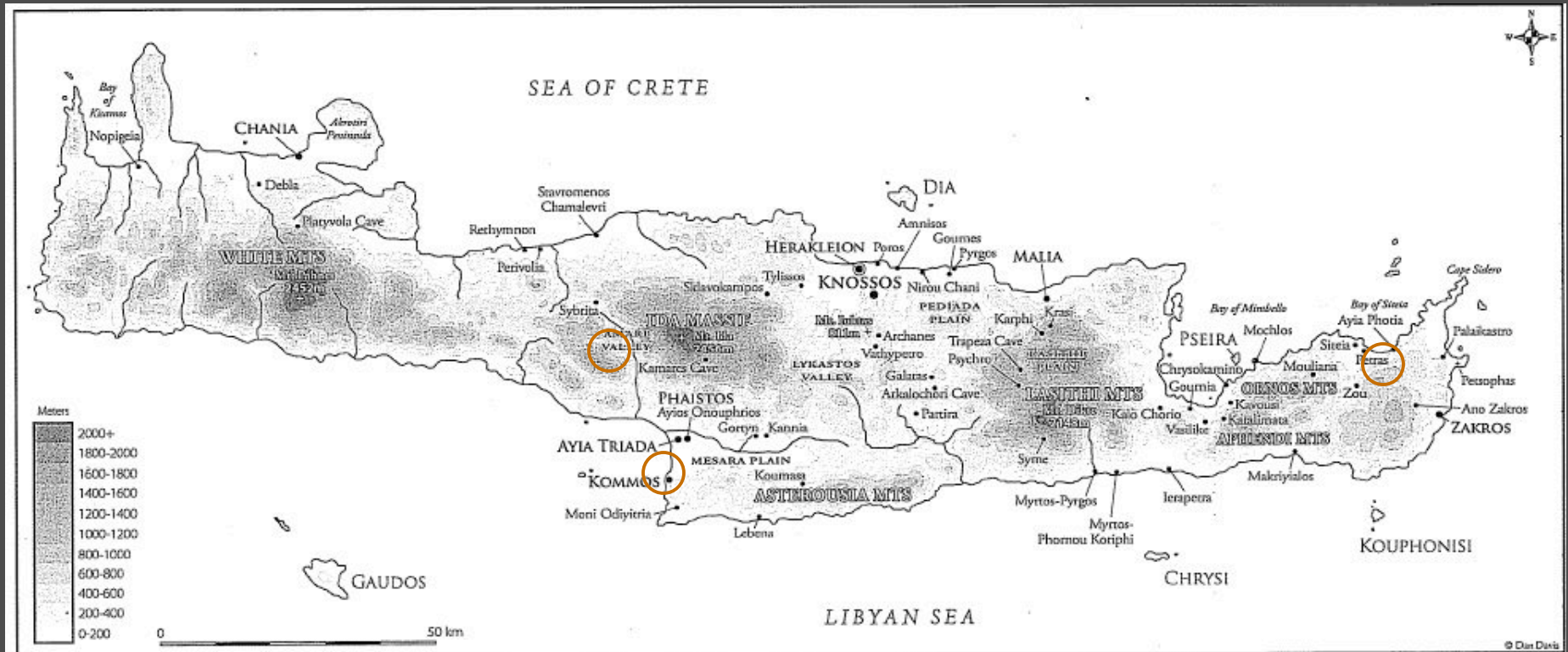
The west court of the First Palace at Phaistos,
showing the raised causeways and theatral area





Comparative plans of the western blocks and west courts of Minoan palaces at Phaistos, Knossos, and Mallia, showing the triangular raised causeways in the paved west courts and, at Phaistos and Knossos, the stepped 'theatral areas' on the north and the sunken kouloures (pits) next to the causeways

“New” Protopalatial palaces on Crete





Photos of Monastiraki

- Protopalatial “palace”
- reception hall (above)
- administrative complex (below)



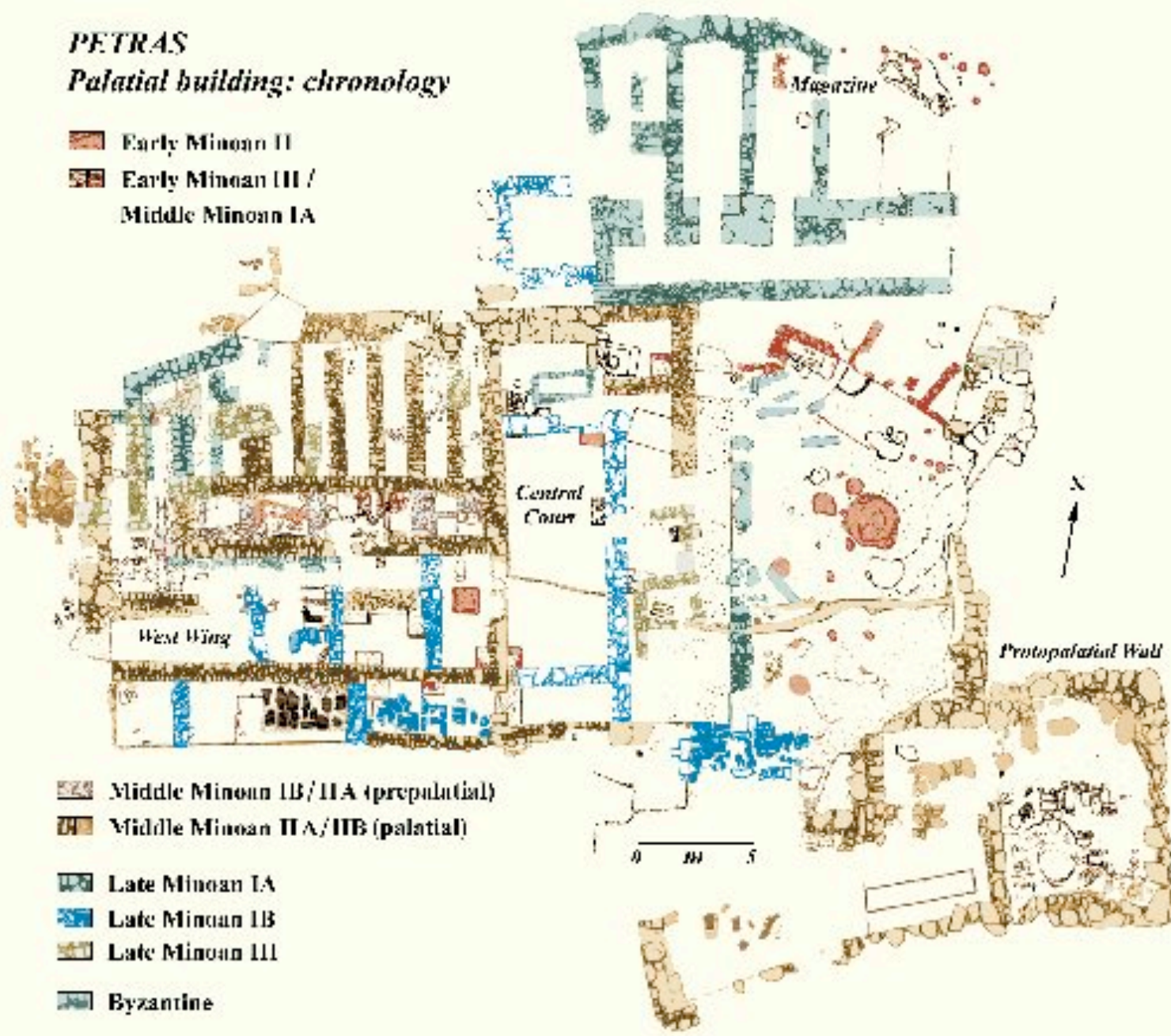
Site of the ongoing excavations at Kommos



PETRAS

Palatial building: chronology

- Early Minoan II
- Early Minoan III / Middle Minoan IA



Photographs of the palace at Petras, Siteia



View of the monumental staircase in the central court

View of the earlier and later central courts from the NE



Mallia - plan of Quartier Mu

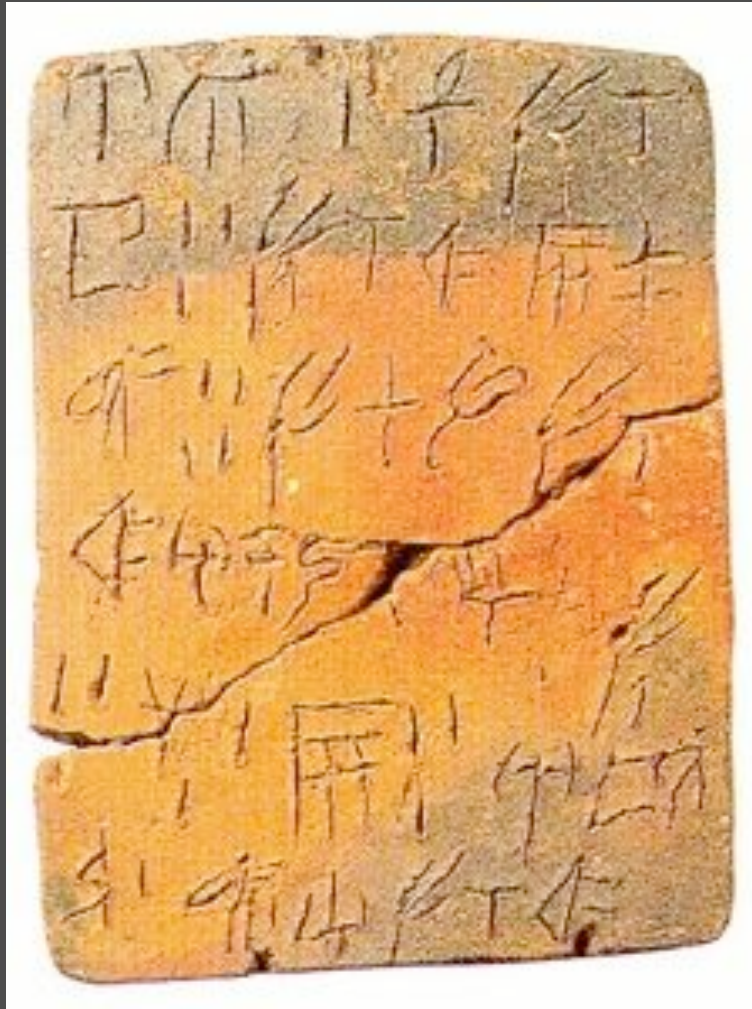


- large administrative structure (Building A)
- workshops
- small paved courts
- small west court has raised causeway

Photograph of the excavations at Quartier Mu at Mallia



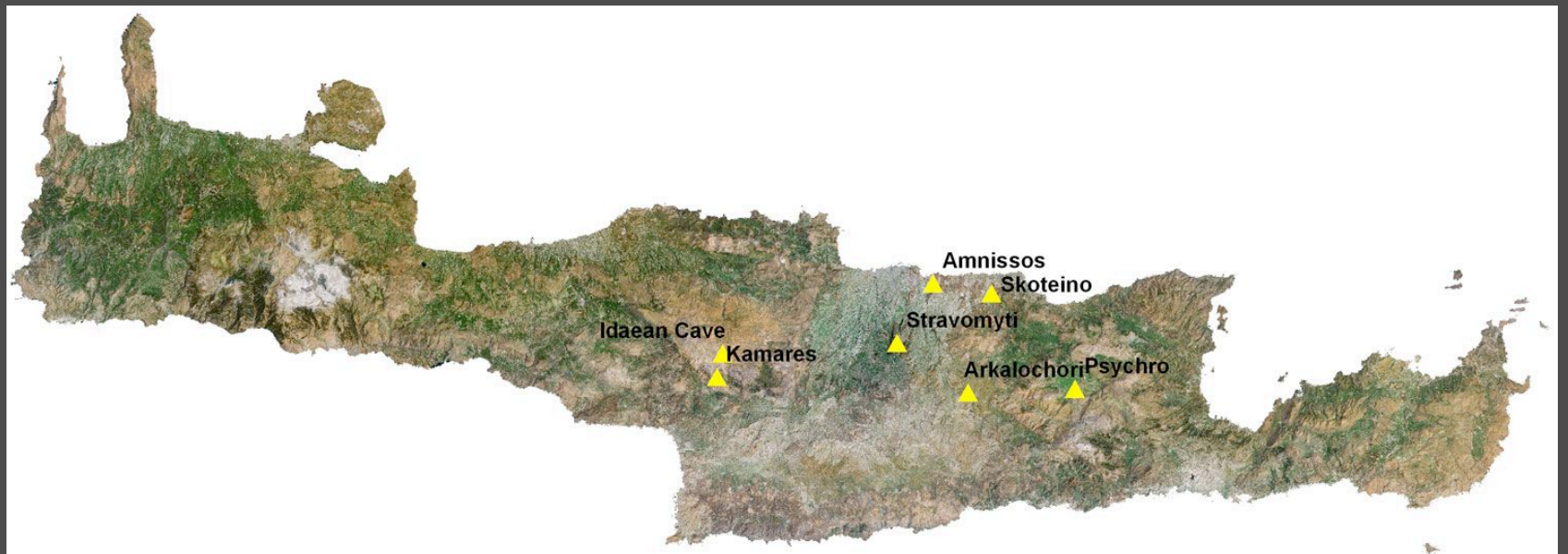
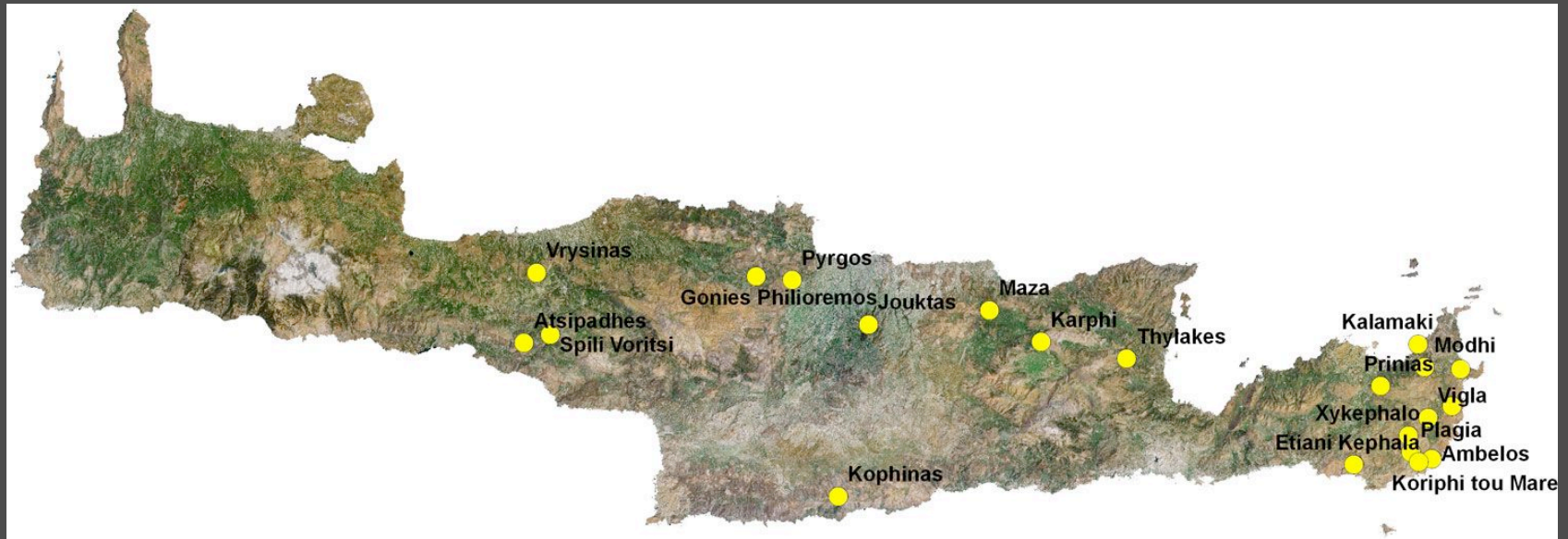
The Linear A script from Minoan Crete



- appears in MM IB or MM IIA
- lasts no later than LM I
- never on seals - mostly on clay tablets
- found at “archives” at Ayia Triadha and Chania, but also in Archanes, Phaistos, Mallia, Knossos, and Zakro
- syllabary script with 85 distinct signs



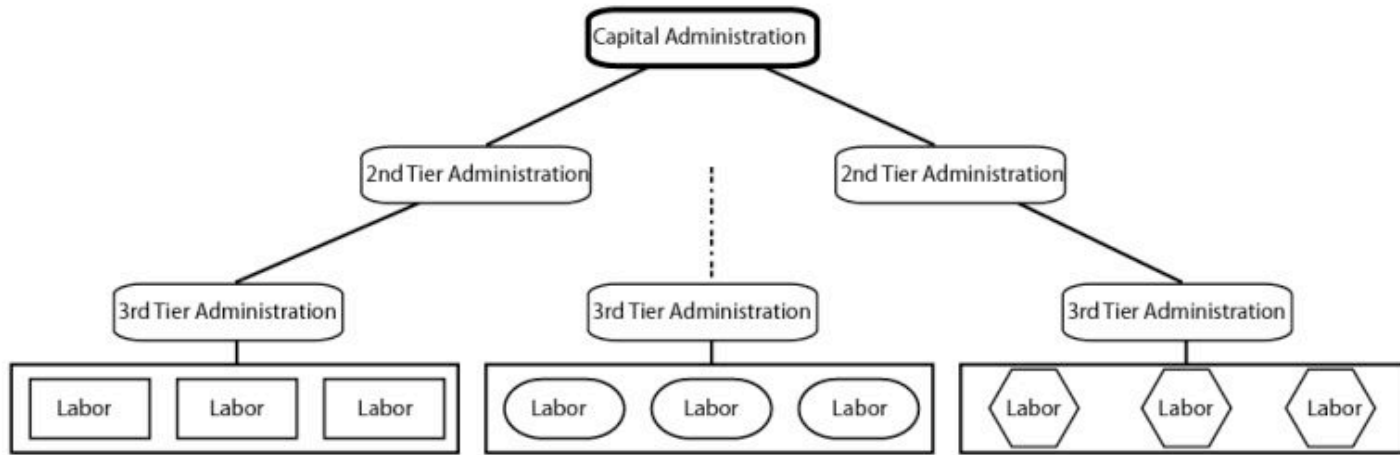
Distribution maps of the peak sanctuaries (above)
and sacred caves (below) in the Protopalatial period



Models/theories of state formation

- Redistribution model (Renfrew 1972)
- Coercive redistribution model (Gamble 1979)
- Social storage (Halstead 1981, 1986)
- Secondary products revolution (Sherratt, van Andel, and Runnels)
- Heterarchy vs. hierarchy

Hierarchical State Model



Heterarchical State Model

