

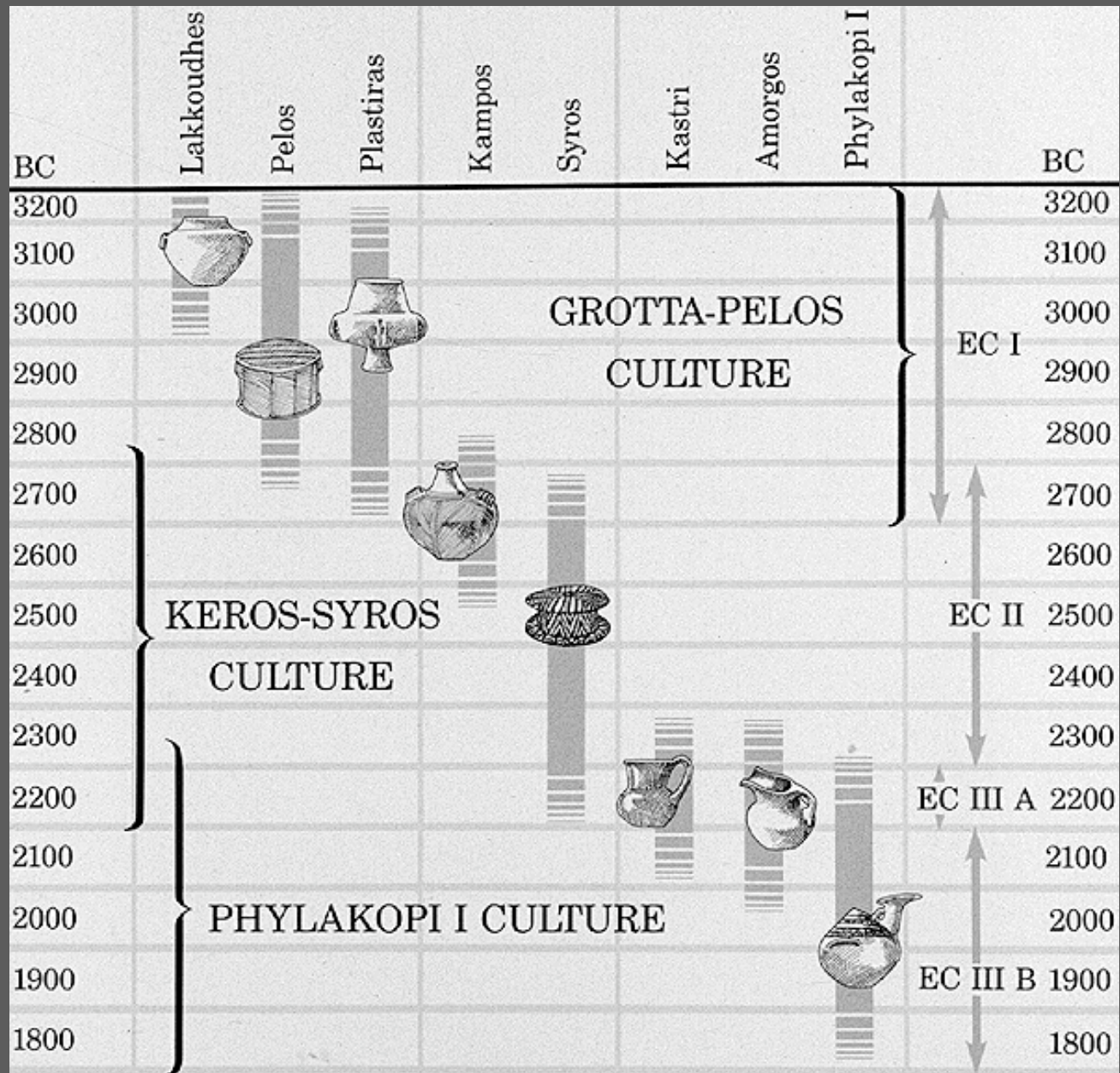
# The Early Bronze Age in the Cycladic Islands

ca. 3100/3000 - 1900/1850 BCE

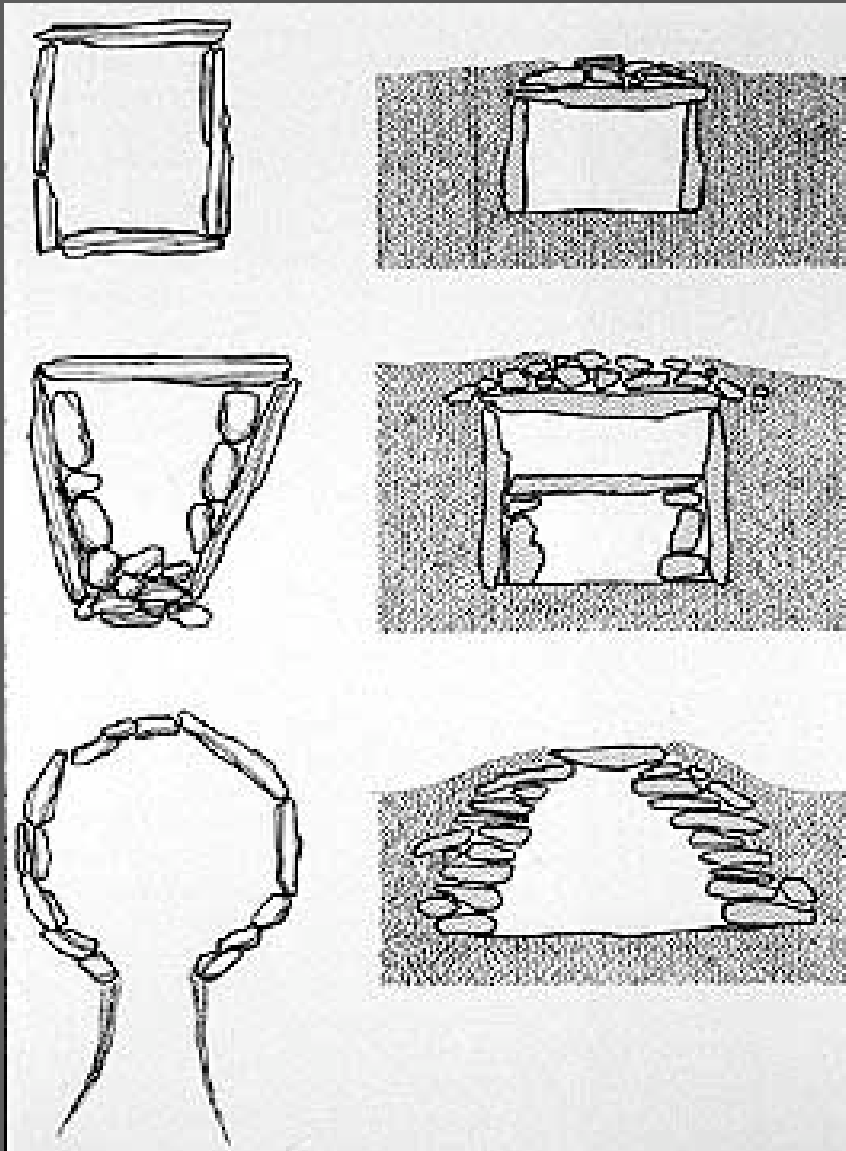
# Map of the Aegean - the Cycladic Islands



# Cycladic Chronology



## Early Cycladic Tomb Types



**Top:** Cist grave of the Gotta-Pelos culture.

**Middle:** Two-storeyed grave of the Keros-Syros culture.

**Bottom:** Corbelled grave of the Keros-Syros culture, of the type found on Syros.

## Early Cycladic I - Grotta-Pelos Culture (ca. 3100/3000 - 2650 BCE)



Site: Phylakopi on Melos

## Early Cycladic I (Grotta-Pelos Culture) Ceramic Vessels



Pottery cylindrical pyxis (box)  
with rounded lid and incised  
herringbone decoration.  
3200-2800 BC. Antiparos.



Pottery collared jar with incised  
herringbone decoration. 3200-2800 BC.  
Antiparos.

## Early Cycladic IIA - Keros-Syros Culture (ca. 2650 - 2450/2000 BCE)



Sites: Ayia Irini on Kea, Skarkos on Ios  
Cemetery: Chalandriani on Syros  
Survey: Melos and Kea

## Early Cycladic II (Keros-Syros Culture) Ceramic Vessels



Pottery 'hedgehog'. 2700-2200 BC.  
Chalandriani, Syros.



Pottery 'sauceboat' of the  
Keros-Syros culture. 2700-2200 BC.  
Chalandriani, Syros.

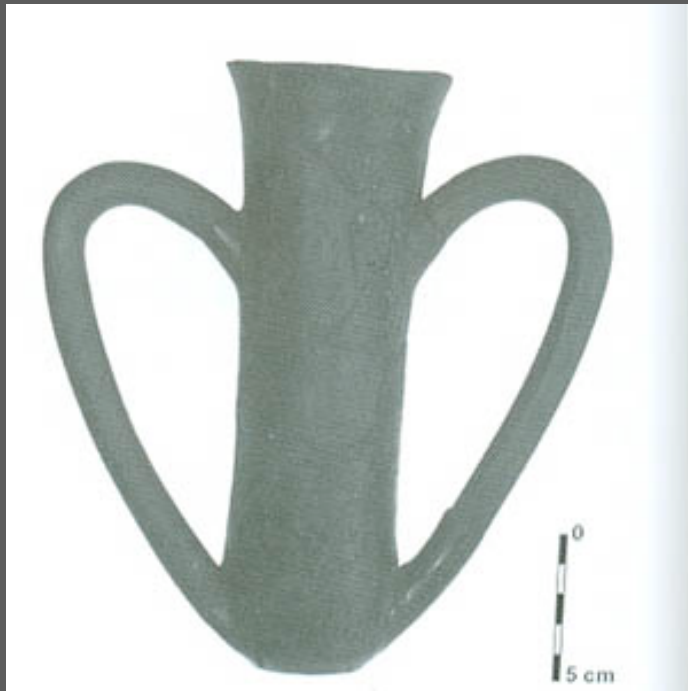
## Early Cycladic IIB/IIIA- Kastri Group or Lefkandi I Culture (ca. 2450/2000 BCE - 2200/2150 BCE)



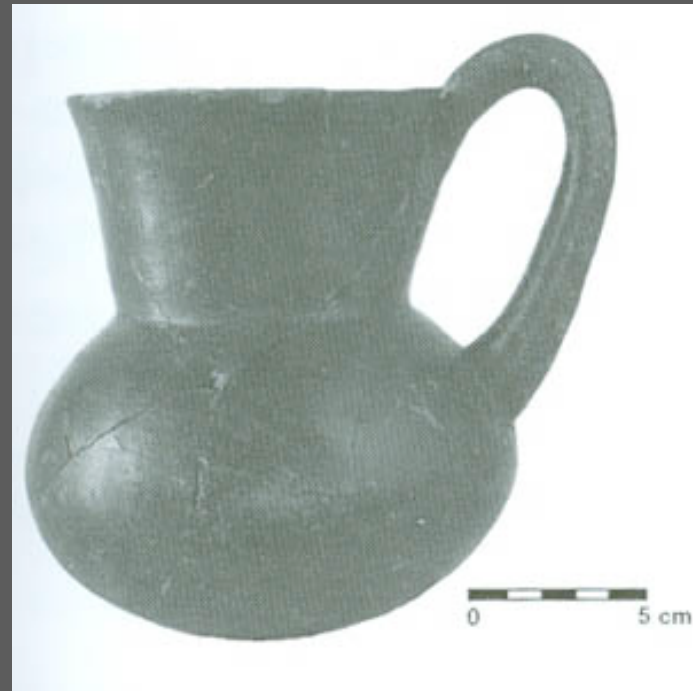
Sites: Kastri on Syros, Panormos on Naxos, Mt. Kynthos on Delos  
and Ayia Irini on Keos

Cemeteries: Chalandriani on Syros, Akrotiaki on Siphnos

Early Cycladic IIB/IIIA (Kastri Group)  
Ceramic Vessels



“Depas” from Ayia Irini on Kea.



Tankard from Ayia Irini on Kea.

# Early Cycladic IIIB/Middle Cycladic IA- Phylakopi I Culture (ca. 2050/2000 - 1900/1850 BCE)



Sites: Phylakopi on Melos, Paroikia on Paros  
Cemetery: Phylakopi on Melos

Early Cycladic III/Middle Cycladic I  
(Phylakopi Culture)  
Ceramic Vessels

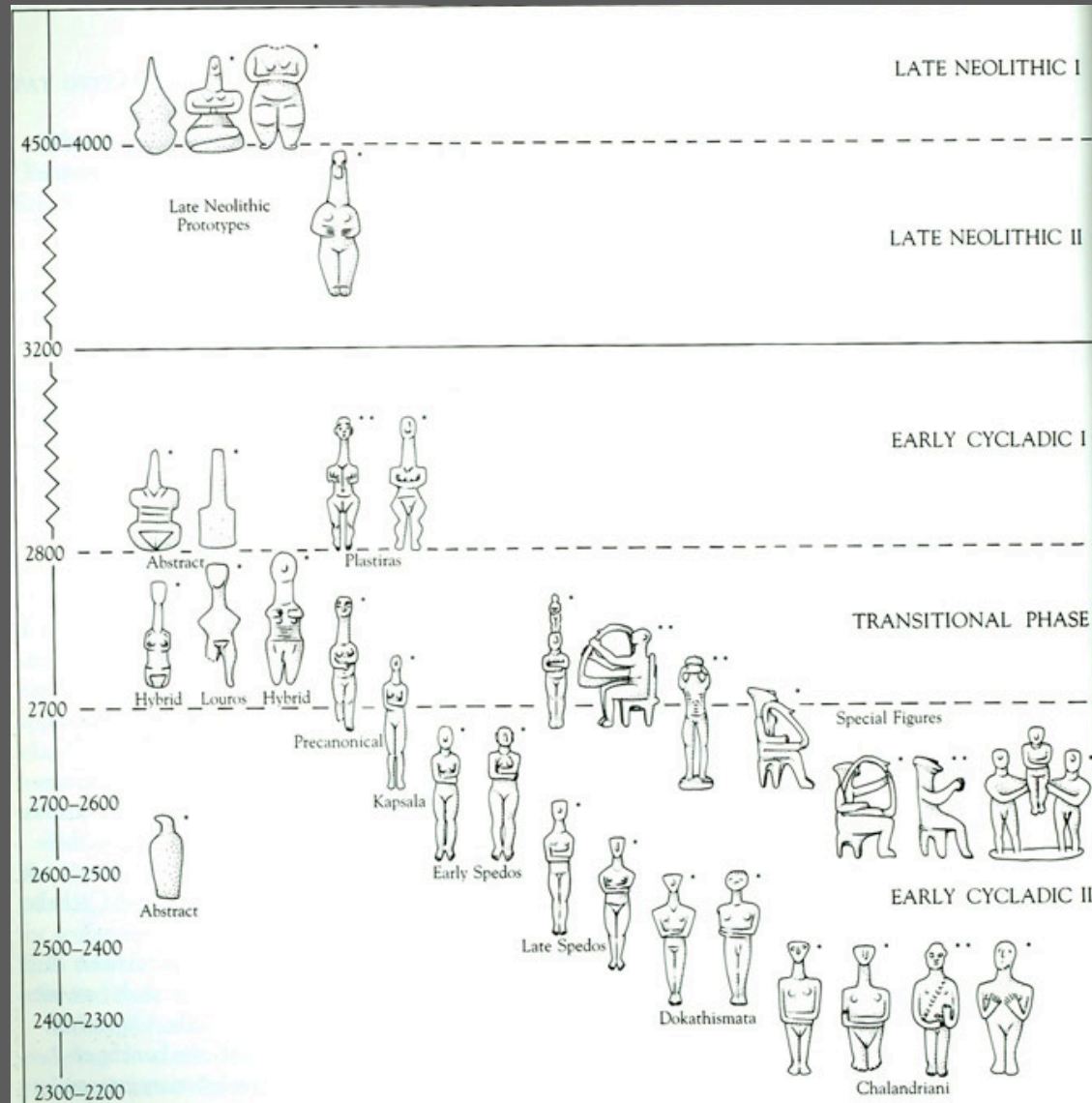


Pottery kernos  
(multiple cluster vase).  
2200-1800 BC.



Pottery 'duck vase' or askos.  
2200-1800 BC.

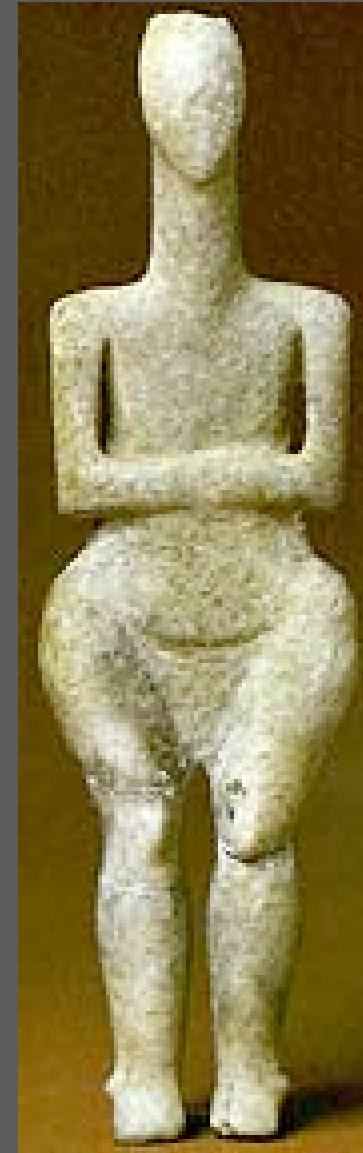
# Typology/Seriation of Early Cycladic Marble Figurines



Early Cycladic I (Grotta-Pelos)  
Marble Figurines



Two schematic figurines found in the same grave on Antiparos, perhaps a male and female pair. 3200-2800 BC.



Figurine of Plastiras type. 3000-2800 BC.

## Early Cycladic II (Keros-Syros Culture) Marble Figurines



Kapsala type,  
2700-2600 BC.



Front and side views.  
Early Spedos type.  
2700-2500 BC.



Two complete figures  
and a head attributed to  
the Goulandris Master.  
Late Spedos type,  
2600-2400 BC.

## Other types of Cycladic figurines



Seated figure lifting a cup, as if proposing a toast. 2700-2500 BC.



Harpist and double-flute player found together in a single grave. Keros. 2700-2500 BC.



Figurine of a pregnant woman

## “Frying Pans” from the Early Cycladic periods



Front and back views of a frying pan. Provenience unknown.  
Goulandris Collection. Kampos Group.



Frying pan engraved with an image of a ship, from a tomb at Chalandriani (Syros).  
Keros-Syros Group,  
2500-2200 BC.

# Early Cycladic Marble Vessels of the Keros-Syros culture



Rectangular "palette"



Footed cup



Spouted bowl



Footed vessel with four cups



Footed cup

## Cycladic “Art” Issues:

- Looting, collecting, and the black market
- Typology and seriation - linked to above?
- Form and function
- Iconography and symbolism

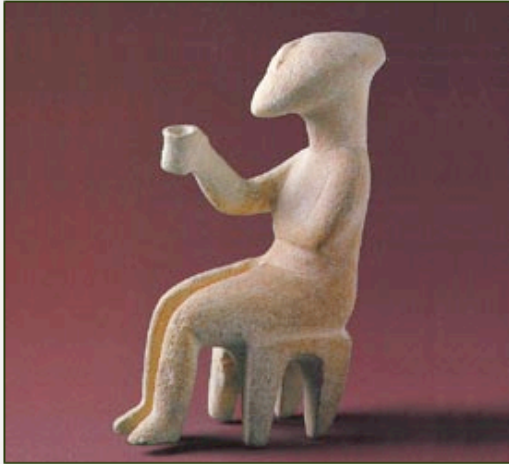
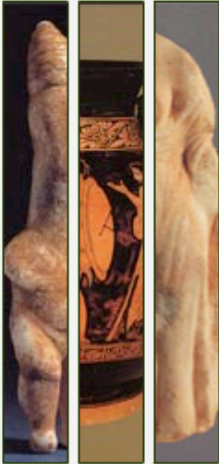
# 1. Looting

THE NICHOLAS P. GOULANDRIS FOUNDATION  
MUSEUM OF CYCLADIC ART

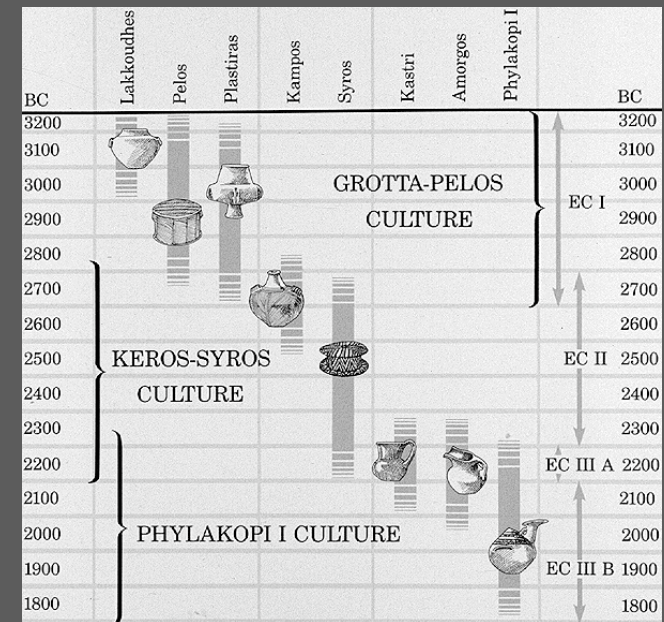
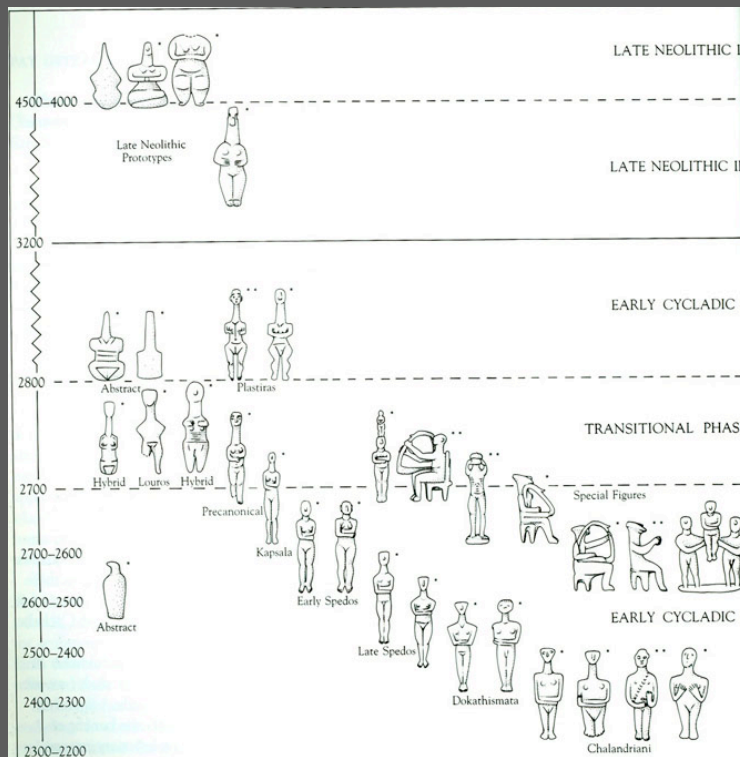
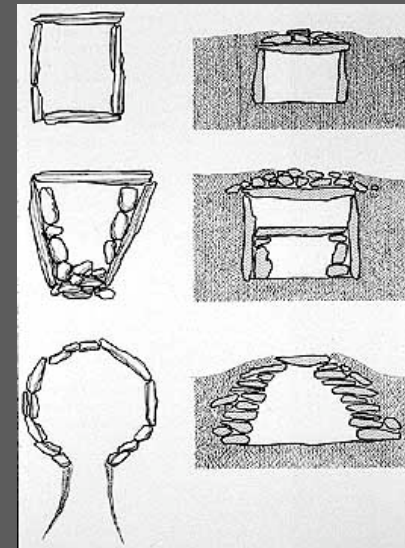
- About the museum
- Permanent collections
- Temporary exhibitions
- Educational programmes
- Museum shop
- Cafe
- News
- Become a member
- Cycladic Art Foundation

greek version

info



## 2. Typology and Seriation



### 3. Form and Function



## 4. Iconography

