

The Workmen's Village and Production at Amarna

The Great Heresy: Egypt in the Amarna Age

Elizabeth Murphy

22 March, 2011

Main Objectives:

- Explore why Production and Workers are Important Archaeological Topics
- Workmen's Village
 - Lifeways of the ancient Working Class
 - Questions of Village Life Continuity/Discontinuity
 - Deir el-Medina v. Amarna Workmen's Village
- Outline the Evidence for Production at Amarna

Why Workers and Production?

Why Workers and Production?

- Social and Economic Implications
 - NK Temple Economies
 - Working “Class”
 - Social Organization
 - Status/Identity
 - Daily Life

Worker Positions Referenced in Textual Sources

- *imy-r* "Overseer"
- *hryw* "Chief"
- Average Workers
- Apprentices



Ostraca from Deir el-Medina

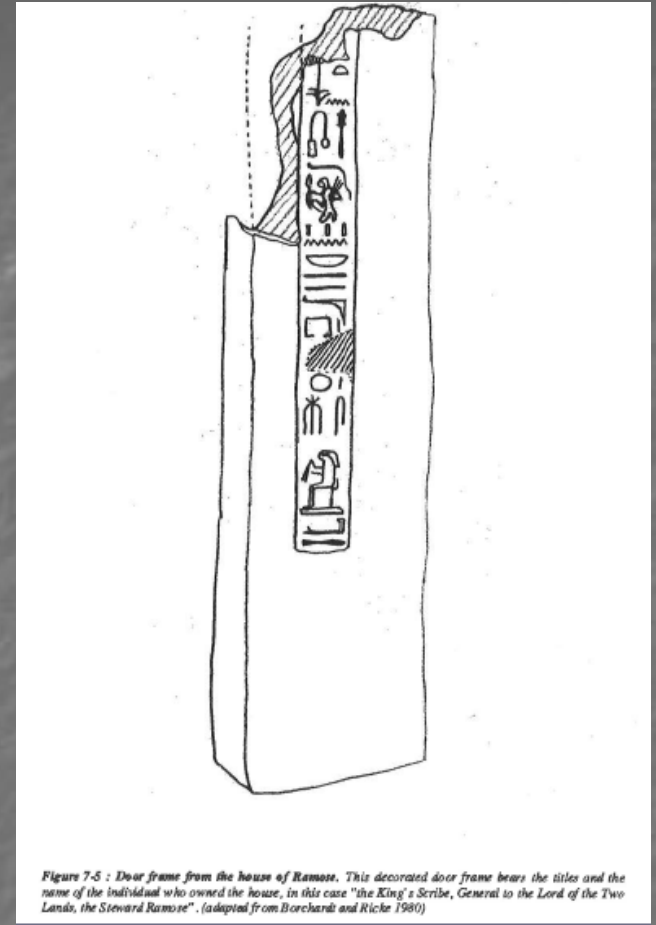


Figure 7-5 : Door frame from the house of Ramose. This decorated door frame bears the titles and the name of the individual who owned the house, in this case "the King's Scribe, General to the Lord of the Two Lands, the Steward Ramose". (adapted from Borchardt and Rickett 1980)

Deir el-Medina (*set maat*), Workmen's Village, Valley of the Kings

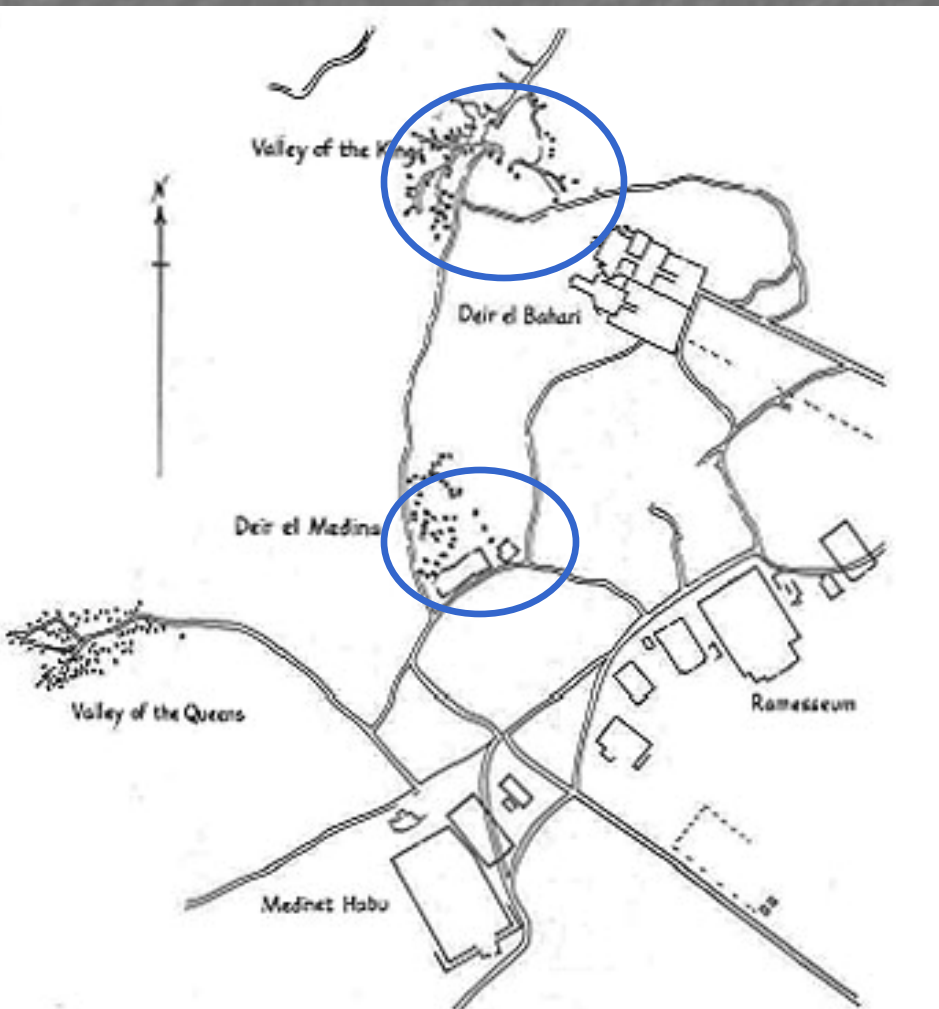
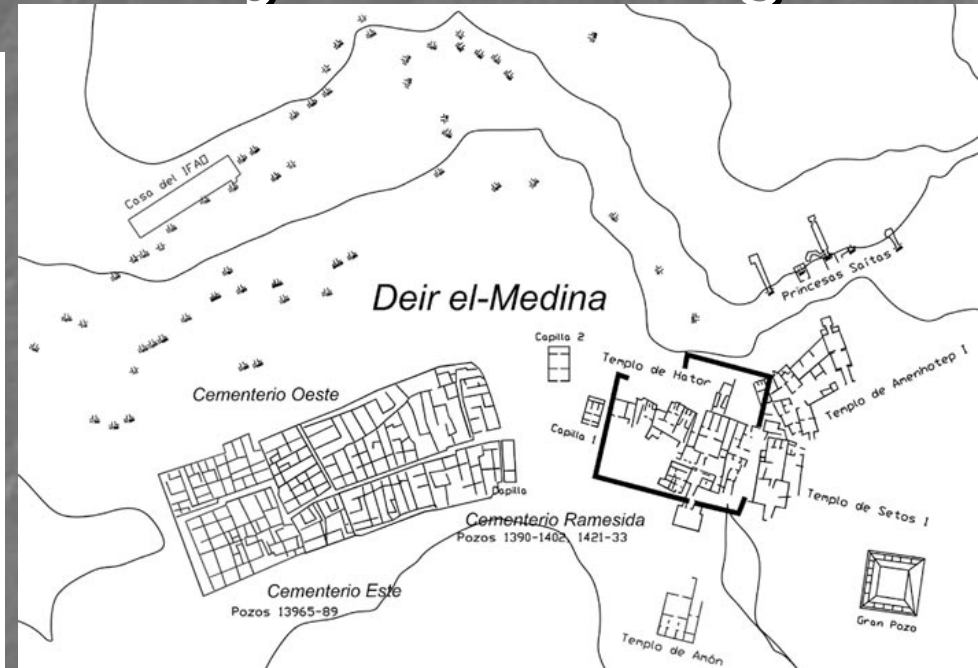


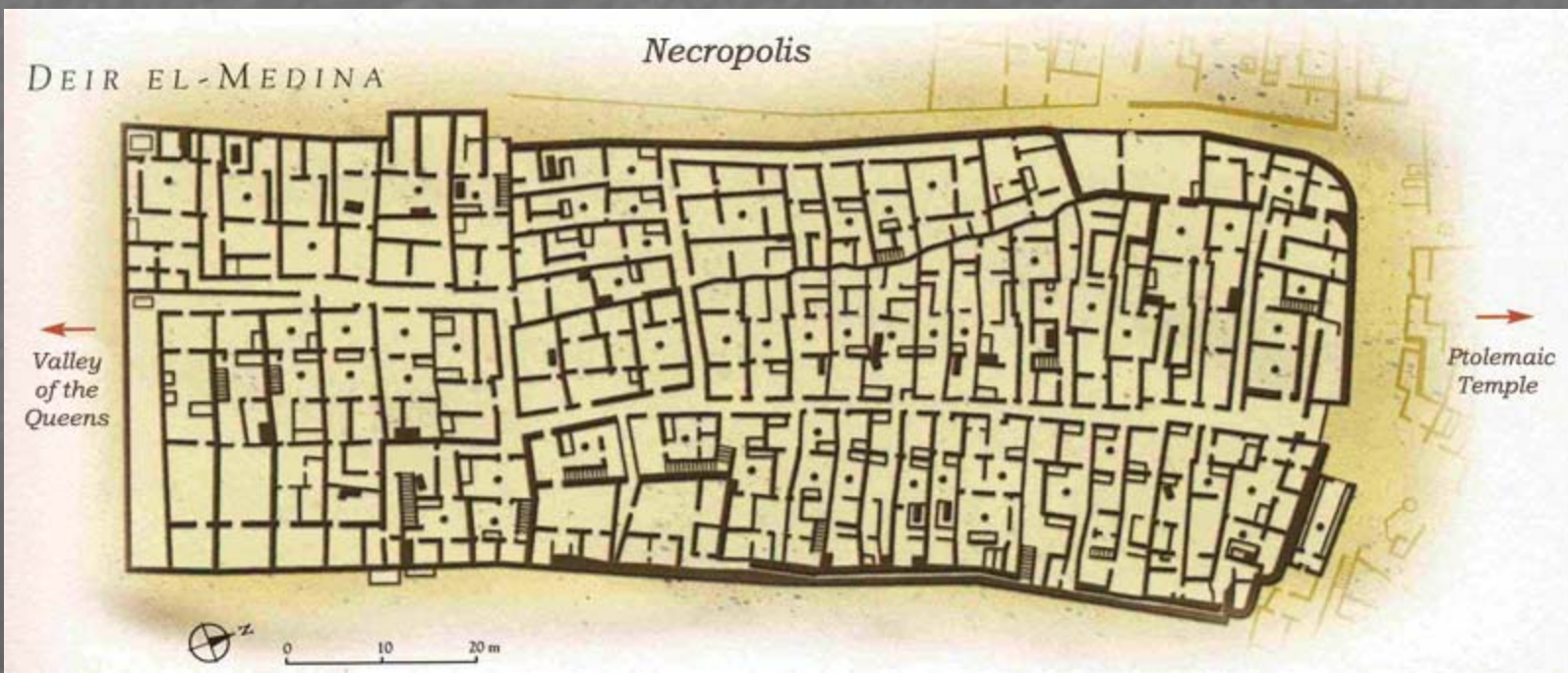
Fig. 2. Plan of the site of Deir el-Medina. (Drawn by Marion Cox.)



Deir el-Medina



D



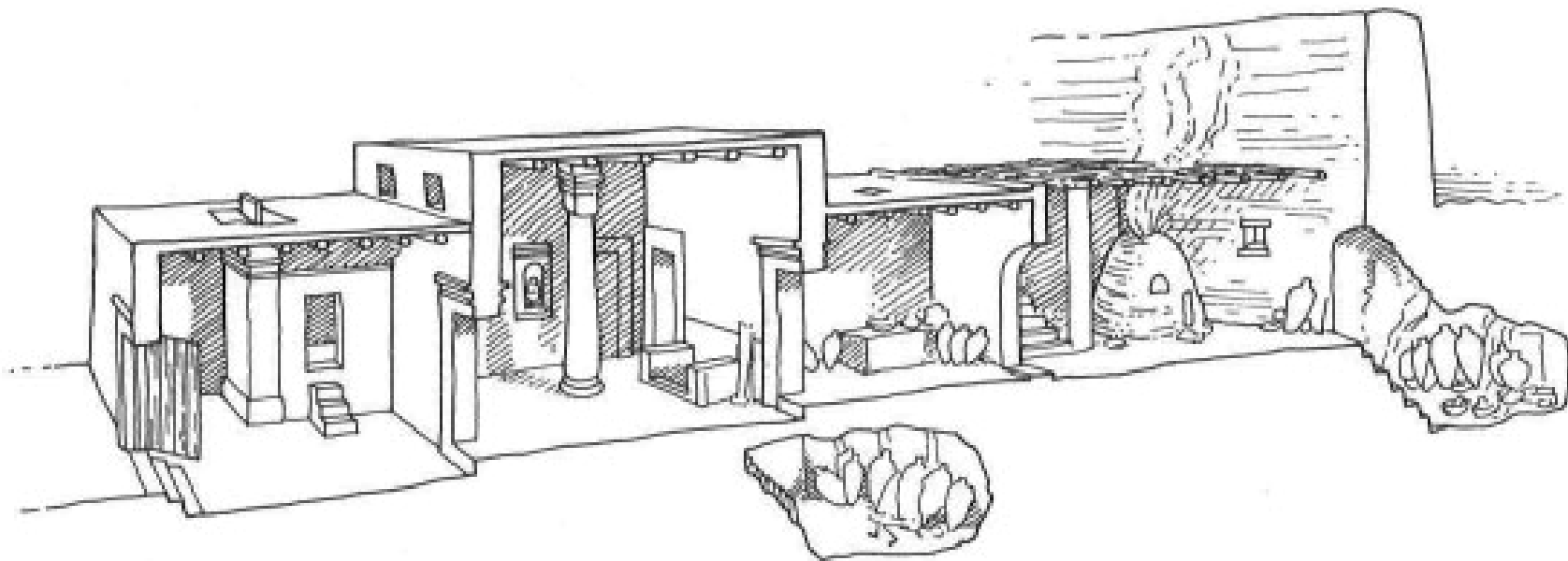
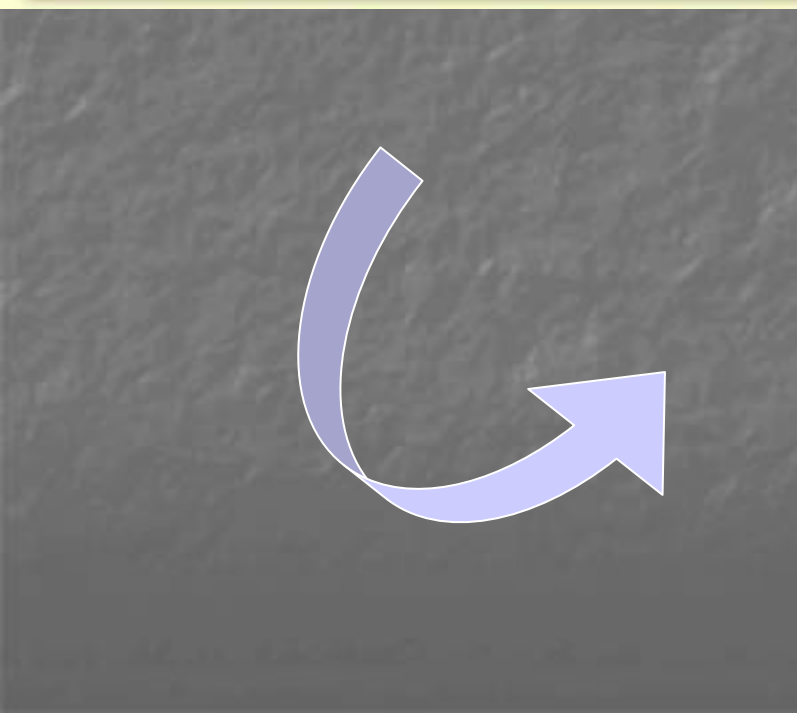


Fig. 3. Section of a typical workman's house. From left to right, the front room with altar, the living room, a smaller room, and kitchen with cellar.
(Drawn by Marion Cox.)



Workmen's Village, Amarna Continuity or Discontinuity?

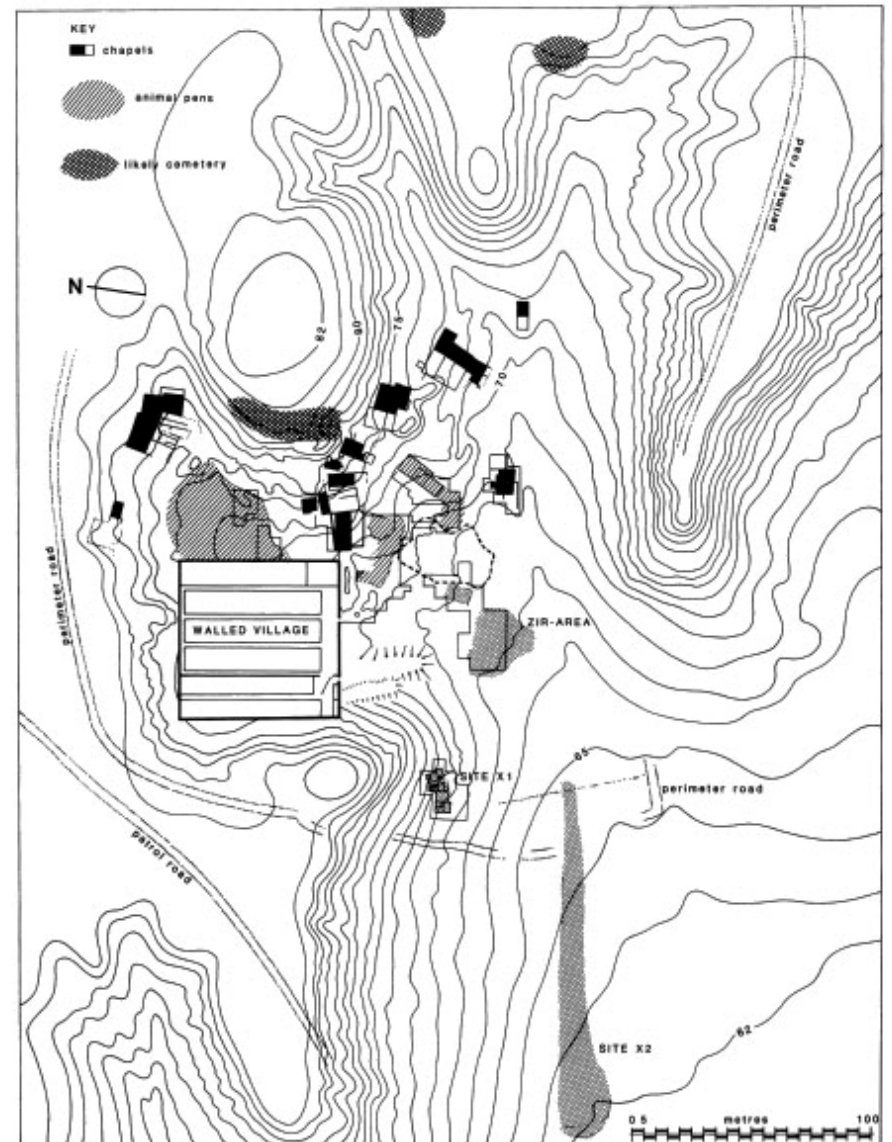
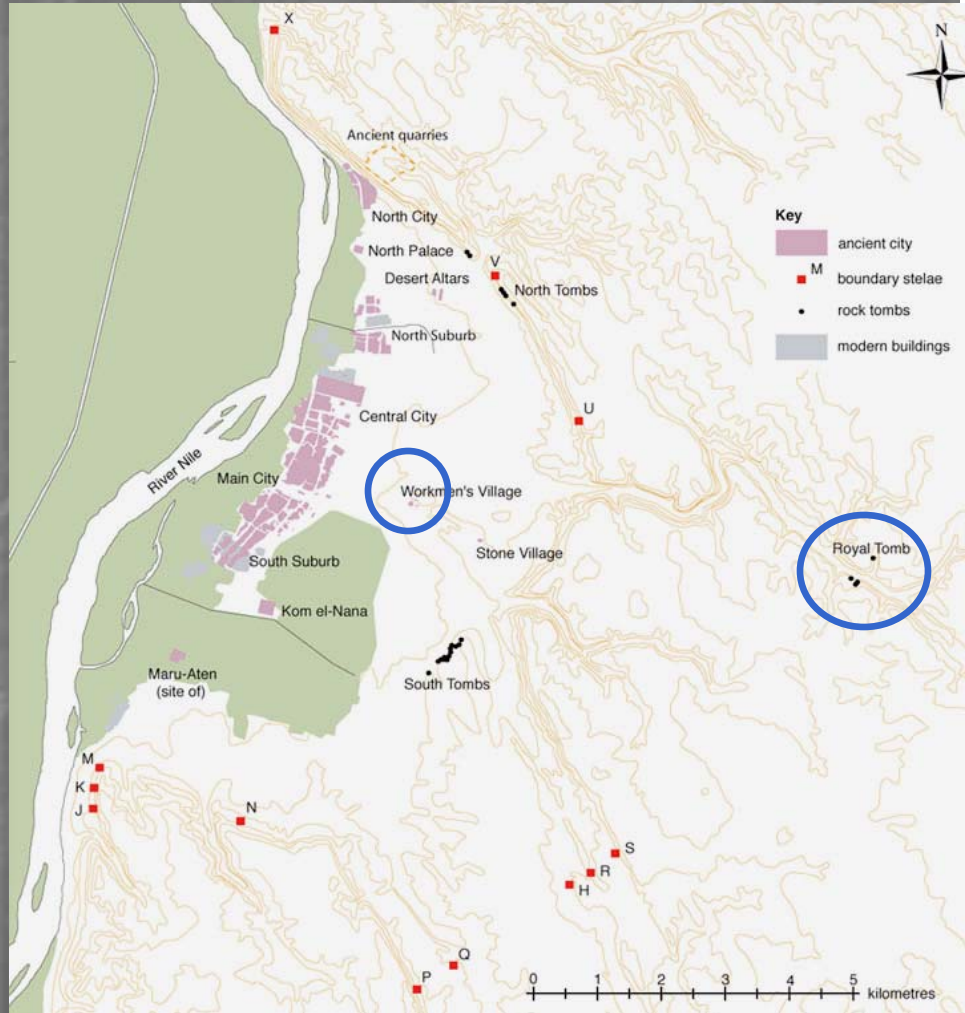


FIG. 1. Map of the area around the Workmen's Village. Some of the contouring, especially on the east, is provisional.

Workmen's Village, Amarna



- Two Phases of Construction
 - Western addition
- 72 houses of same size and general layout
 - (equal status of workmen)
- 2 of greater size
 - overseers

Animal Keeping

- Pens to the East and South of the Village
 - Limestone Troughs
 - Covered
- Pigs, Goats, Cattle

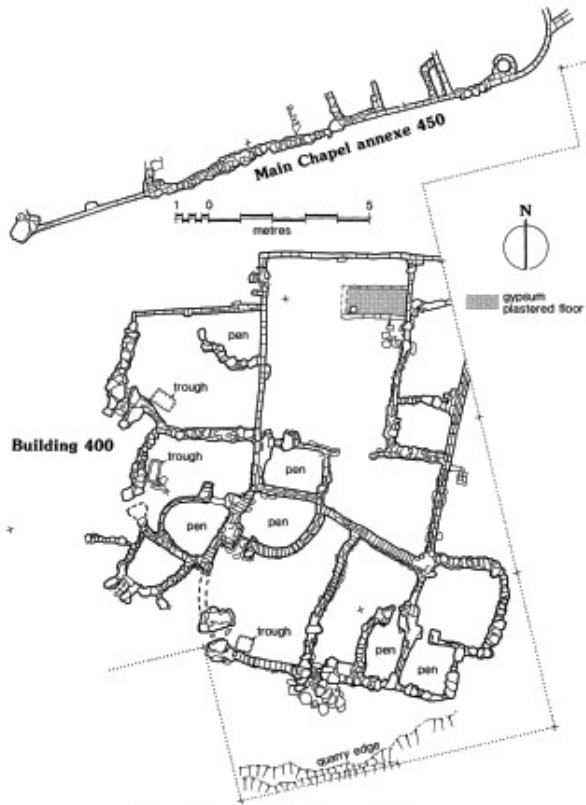
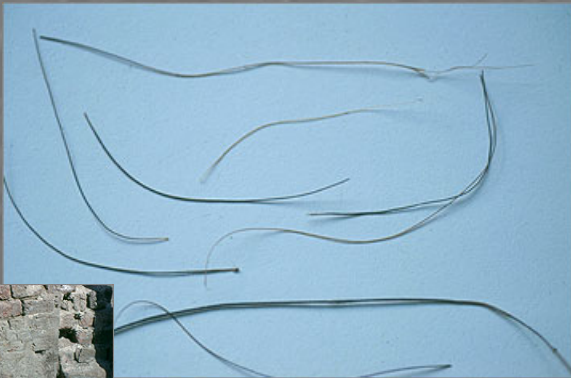


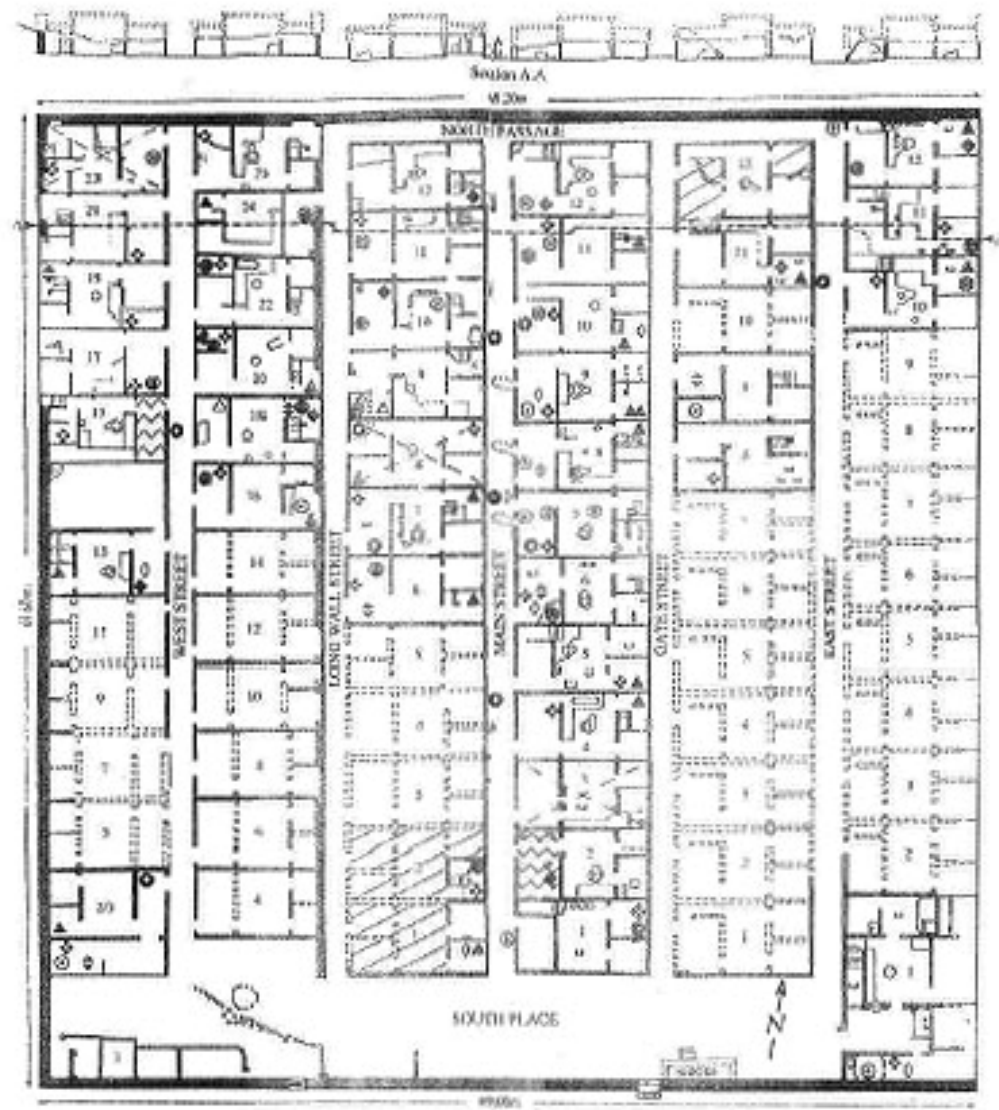
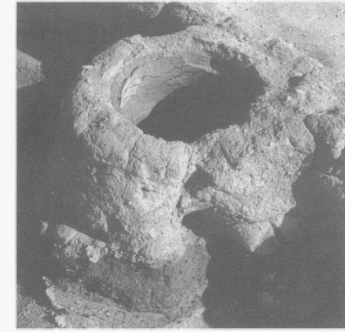
FIG. 49. Outline plan of the animal pens, Building 400.



Household Bread Making



Plate 3 A cylindrical oven from the Amarna Workmen's village. The upper section has been lost. This example was not found in a house but in an annexe of the Main Chapel (Kemp 1987: 56); its size and construction, however, are the same as ovens found in the village houses. It consists of a ceramic cylindrical liner about 3 cm thick, surrounded by a substantial casing of mud brick and mud plaster. Some centimetres above floor level a small air vent, about 10 cm in diameter, pierces both wall and clay lining. This particular oven was built over a thick layer of ash and charcoal produced from another oven in the same room. (Photo by the author, courtesy of the Egypt Exploration Society.)



- | | | |
|---------------------------|---------------------------|--|
| ▲ Oven | ◇ Quest or plastered | ▨ Probably not actual red-dance |
| △ Probable Oven | ◇ Possible open fireplace | ▧ Not excavated or not fully excavated |
| ● Ringed mortar | ◇ Loose parts | ▩ No description in excavation report |
| ⊕ Possible mortar | ◇ Puddle / powder | |
| ⊙ Loose mortar | - Ceramic plaster | |
| ● Mortar with ball or rim | | |

Large-Scale Bread Making



Sherds from broken Bread Moulds
on surface level of Central City

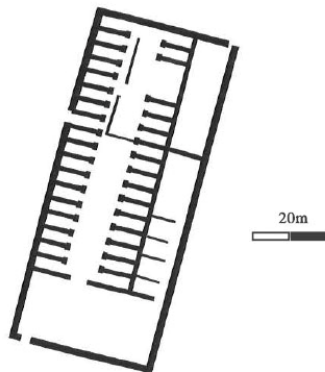


Figure 7-18 : The Bakeries. The Anarna approach to the problem of mass production was to repeat the normal basic domestic kitchen over and over again, until the required number of loaves were produced. The plan to the left shows one of the bakeries (P43.1) clearly illustrating the many small kitchen units within the larger structure (adapted from Kemp and Garfi, 1993).

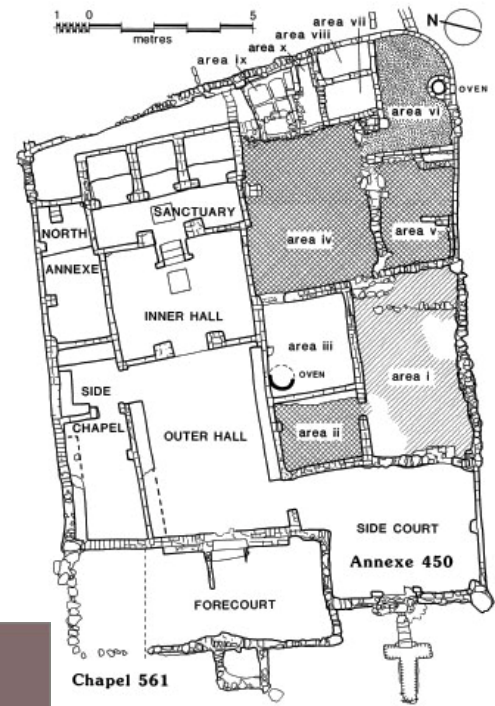
Chapels



Main Chapel (Chapel 561)

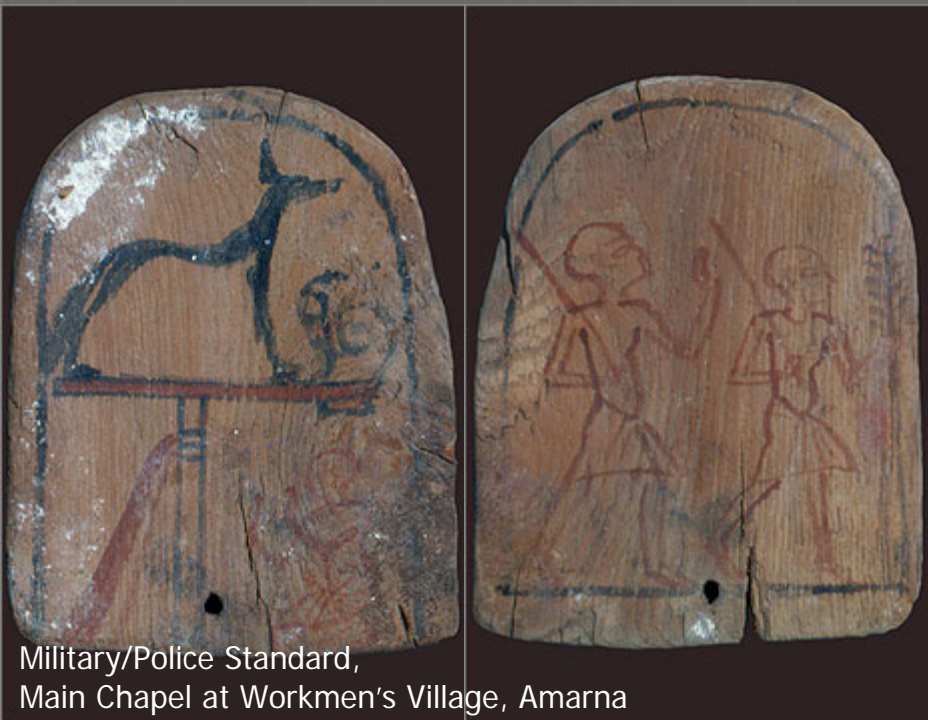


Painted Plaster depicting a woman's face, Main Chapel



Outline plan of the Main Chapel, no. 561/450. Organic floor deposits are shaded: simple hatching for thin deposits, cross-hatching for thicker deposits. Ash deposits are stippled.

Workmen's Village or Police Outpost?



Military/Police Standard,
Main Chapel at Workmen's Village, Amarna

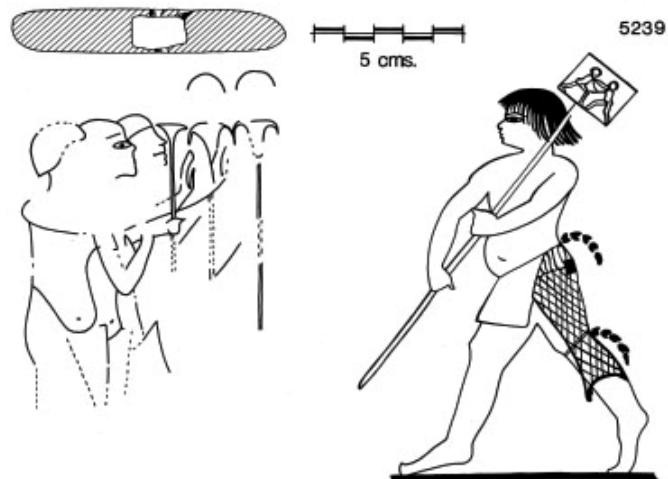


FIG. 5. Wooden top to a military standard, object no. 5239, found in the Sanctuary of the Main Chapel. Below left: military men holding standards in the tomb of Panshy, el-Amarna. Below right: standard bearer in the tomb of Thanuny (Thebes no. 74).

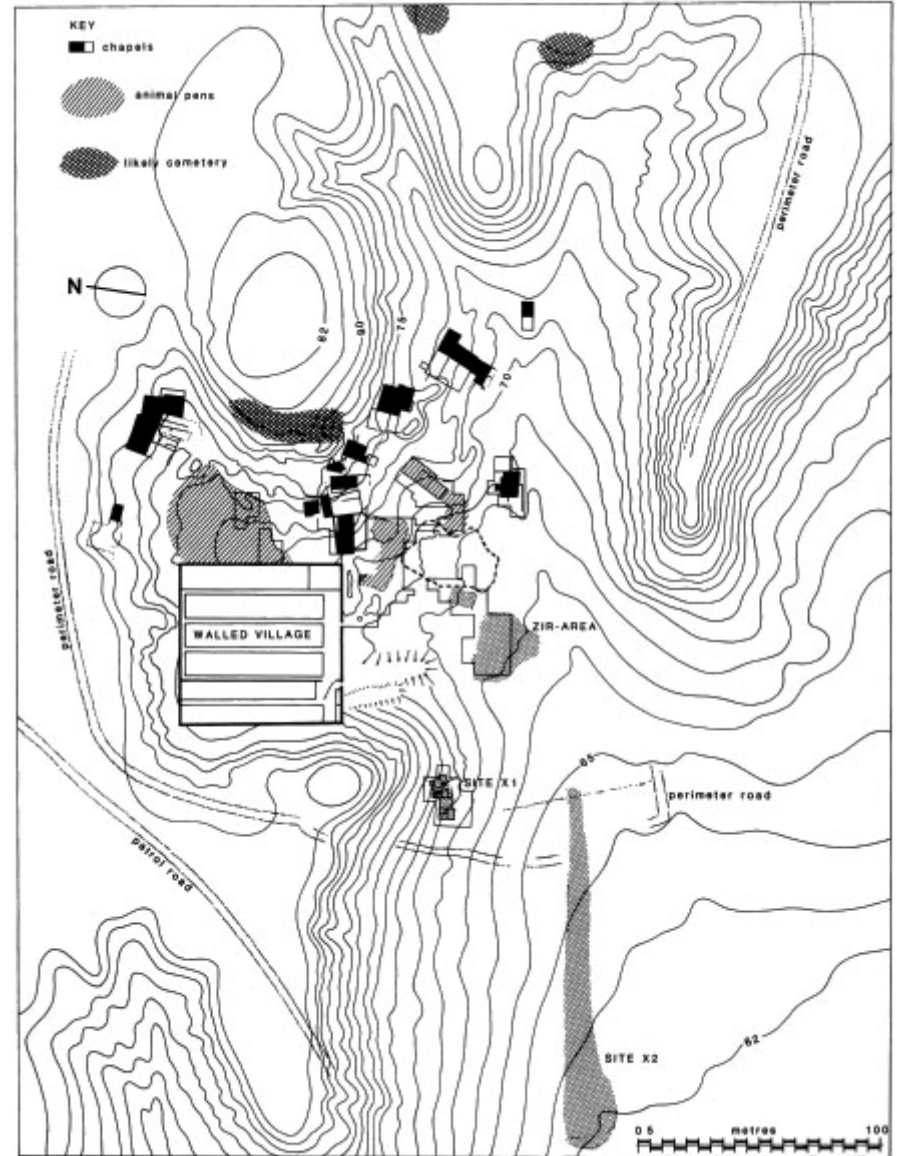


FIG. 1. Map of the area around the Workmen's Village. Some of the contouring, especially on the east, is provisional.

Types of Production

- Bread making
- Sculpture
- Textiles
- Faience
- Ceramic



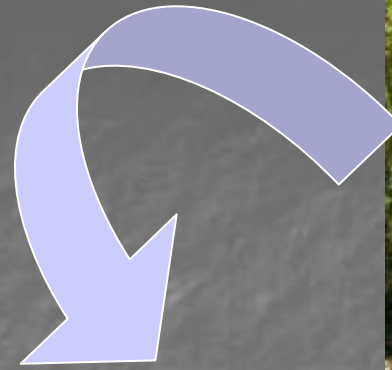
Types of Evidence?

Types of Evidence - Amarna

- Concentration of Production Waste
- Infrastructural Remains
- Locations of Raw Material Extraction
- Geophysical Magnetometry Surveys
- Ethno-archaeological Investigations

Textile Production

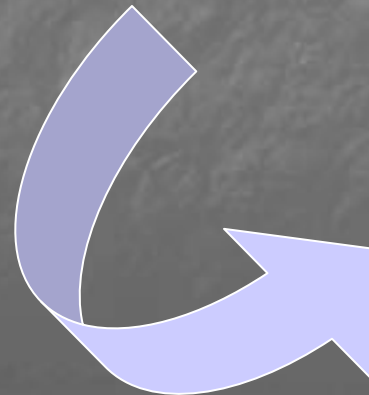
- Linen
 - Flax
- Textile Production Stages
 - Spinning
 - Weaving



Flax Plant



Flax Fiber Strips
(after Retting)



Woven Linen

Textile Production pre-Amarna Evidence

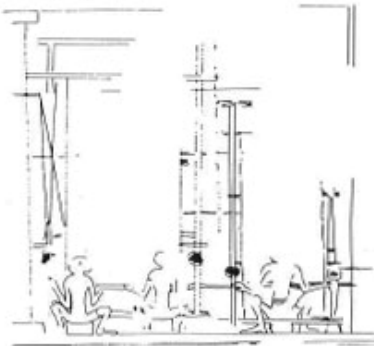
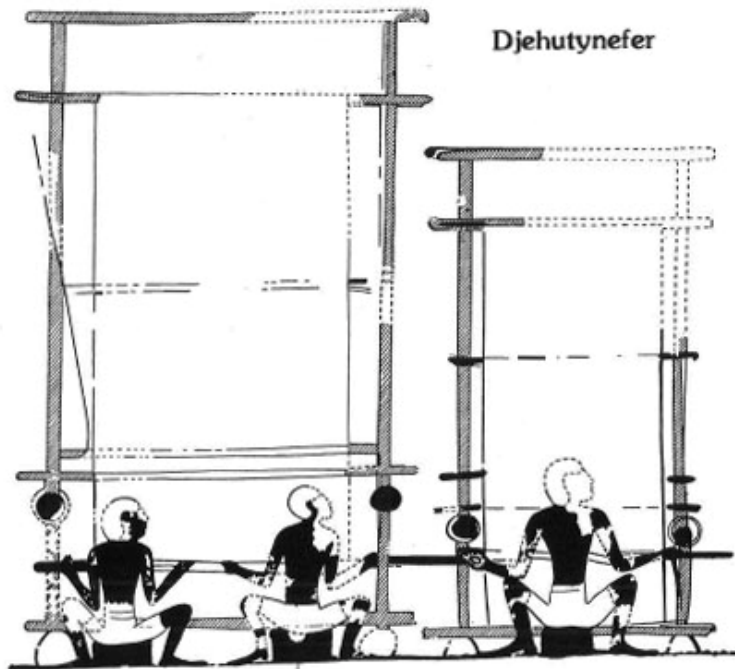


Figure 9.19. Depiction of looms in the Tomb of Djehutynefer at Thebes, no. 104, time of Amenhotep II to Tutankhamun IV (Crawford 1954: 439, Fig. 277 [redrawn from Roth 1913: 14, Fig. 9, after Davies]); below is the scene as given in Shedd 1988: Taf. 27, of 5a, 36a).

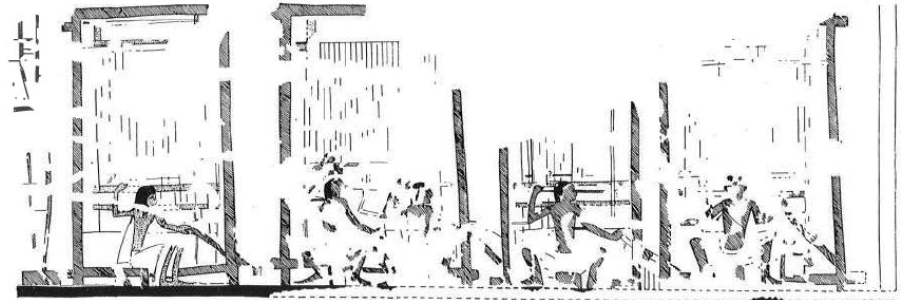


Figure 9.21. Depiction of looms in the Tomb of Neferrhenpet (an 'overseer of weavers') at Thebes, no. 133, time of Ramses II (Davies 1948: 49–51, Pl. XXXV). The full scene is shown in Figure 11.6.

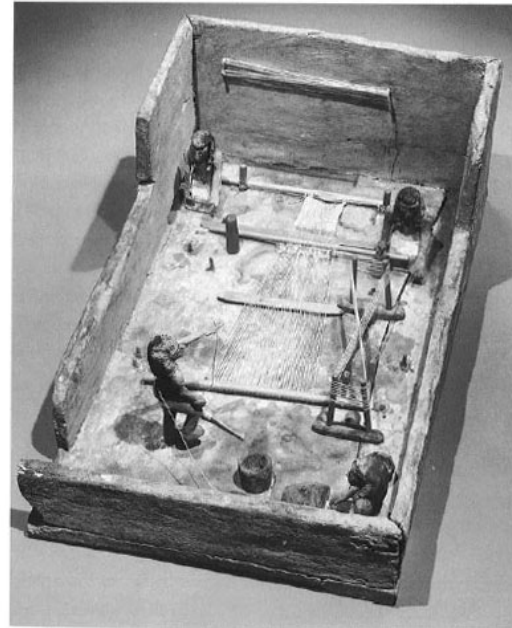


Figure 9.10. Photograph of the Metropolitan Museum of Art model, taken in 1976, before the restorations were removed (by permission of Photographic Services, The Metropolitan Museum of Art, New York, NY 10028).

Textile Production: Amarna Spinning Evidence

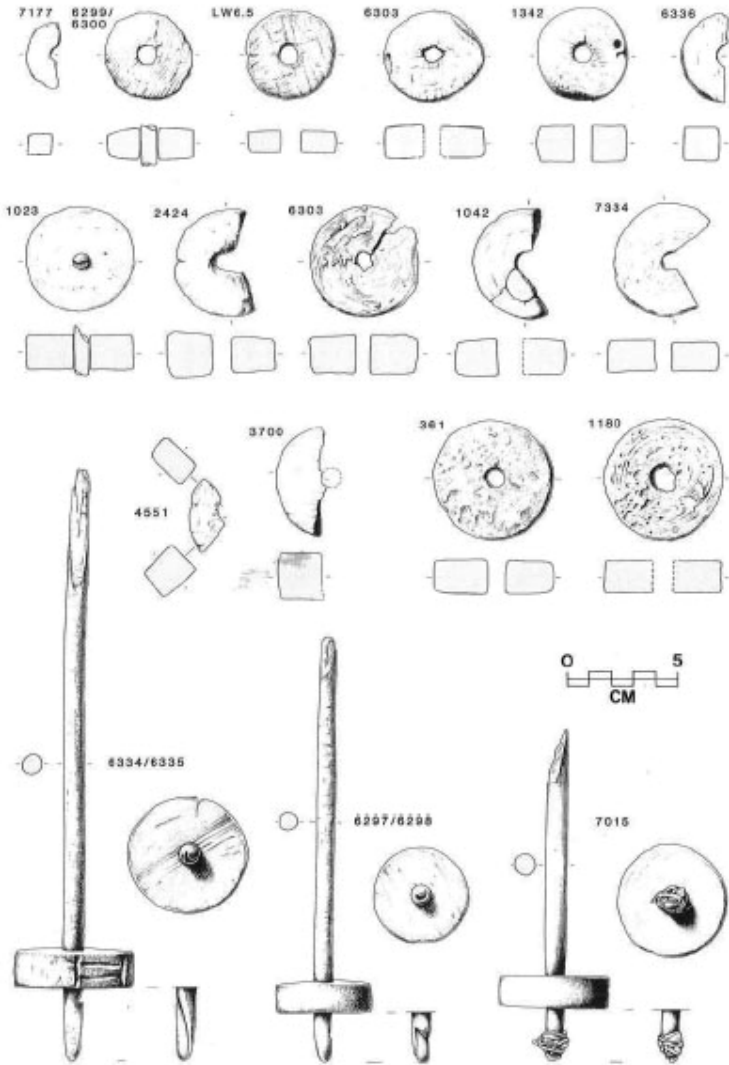


Figure 8.2. Drawings (by A. Boyce) of a selection of wooden spindles and whorls from the Workmen's Village.

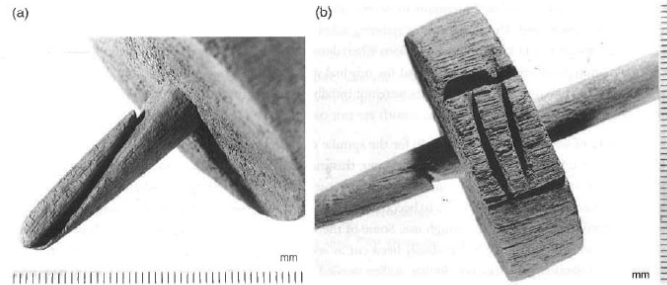


Figure 8.4. Photographs of the end of Workmen's Village spindle and whorl, no. 6334/5.

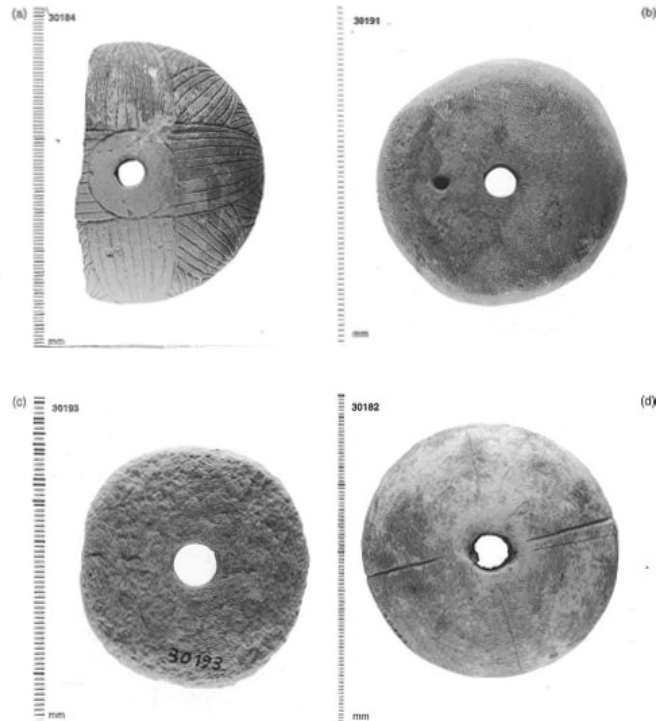


Figure 8.10. Photographs of a selection of spindle-whorls from Borchardt's Amarna excavations, now in the Berlin Museum, nos. 30182, 30184, 30191, and 30193.



Figure 8.11. Photograph, taken in 1912 (2007 neg. 22120), of the limestone spinning level, object no. 22120.

Textile Production: Weaving Evidence Workmen's Village House West Street 2/3

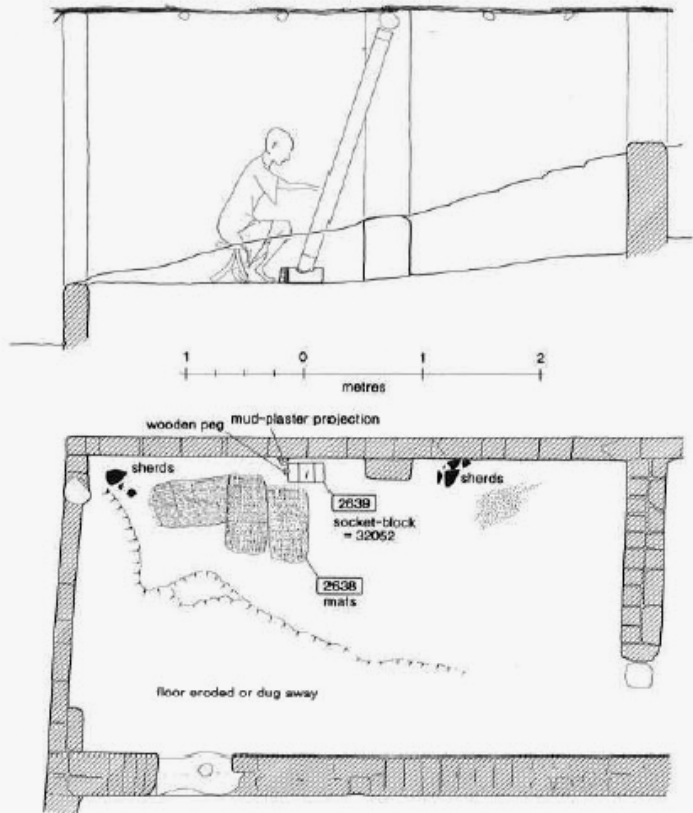


Figure 9.58. Plan and restored elevation of Area ix in West Street 2/3.



a)



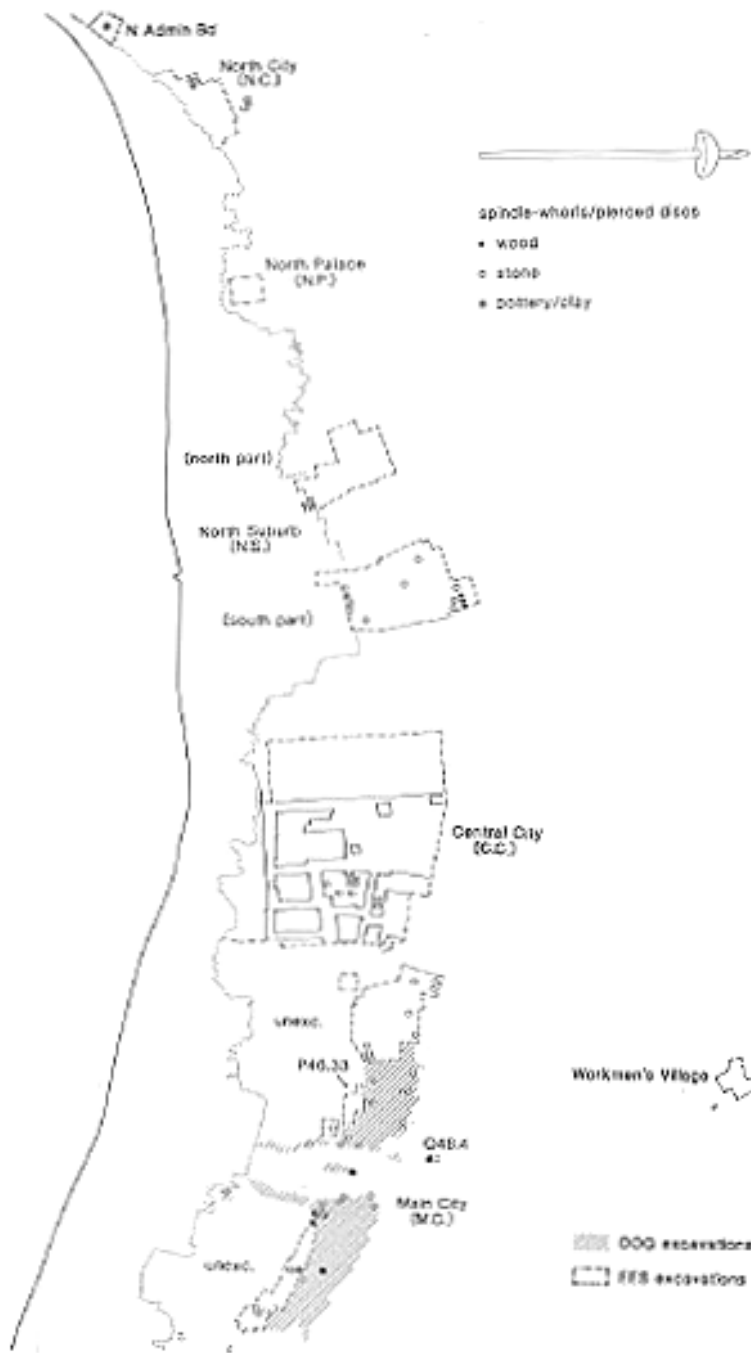


Figure 8.11. Distribution map of likely spindle-whorls at Anama (excepting the Workmen's Village, see Figure 8.7).

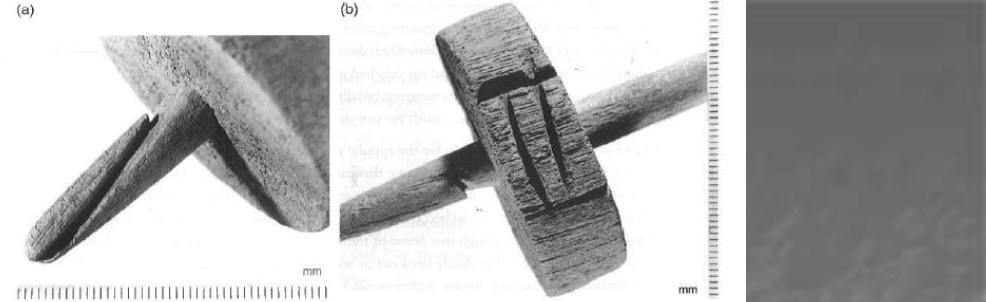


Figure 8.4. Photographs of the end of Workmen's Village spindle and whorl, no. 6334/5.

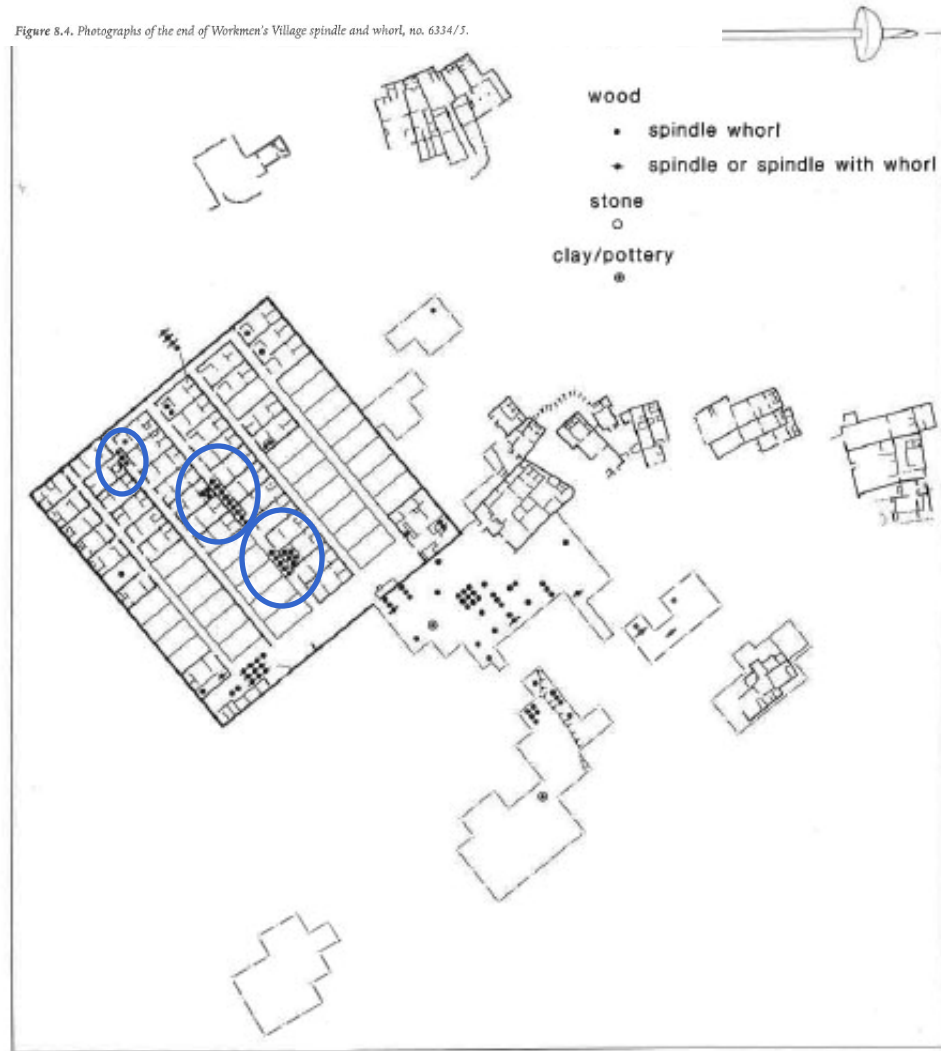


Figure 8.7. Distribution map of spindles and spindle-whorls at the Workmen's Village.

Textile Production: Loom Socket-Block Distribution

Figure 9.53. The known places where socket-blocks have been found at the Workmen's Village.

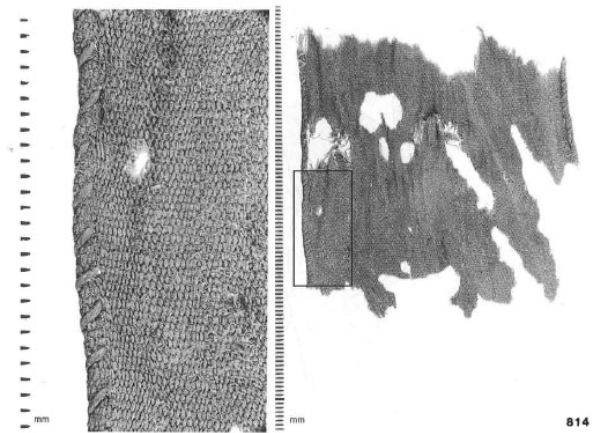
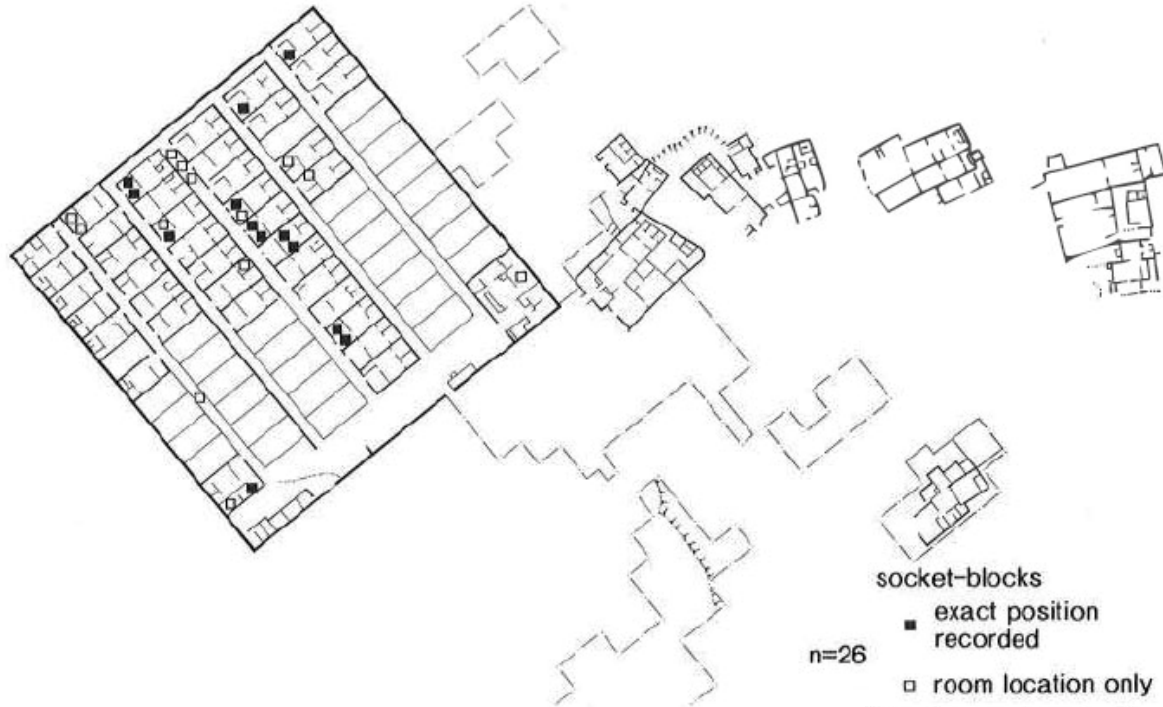
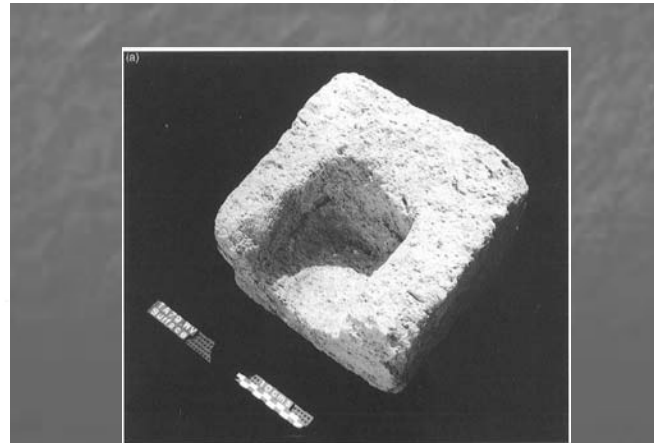


Figure 6.28. Fragment <814> which is tentatively identified as being part of a sash. A portion is shown in close-up view.



Faience Production

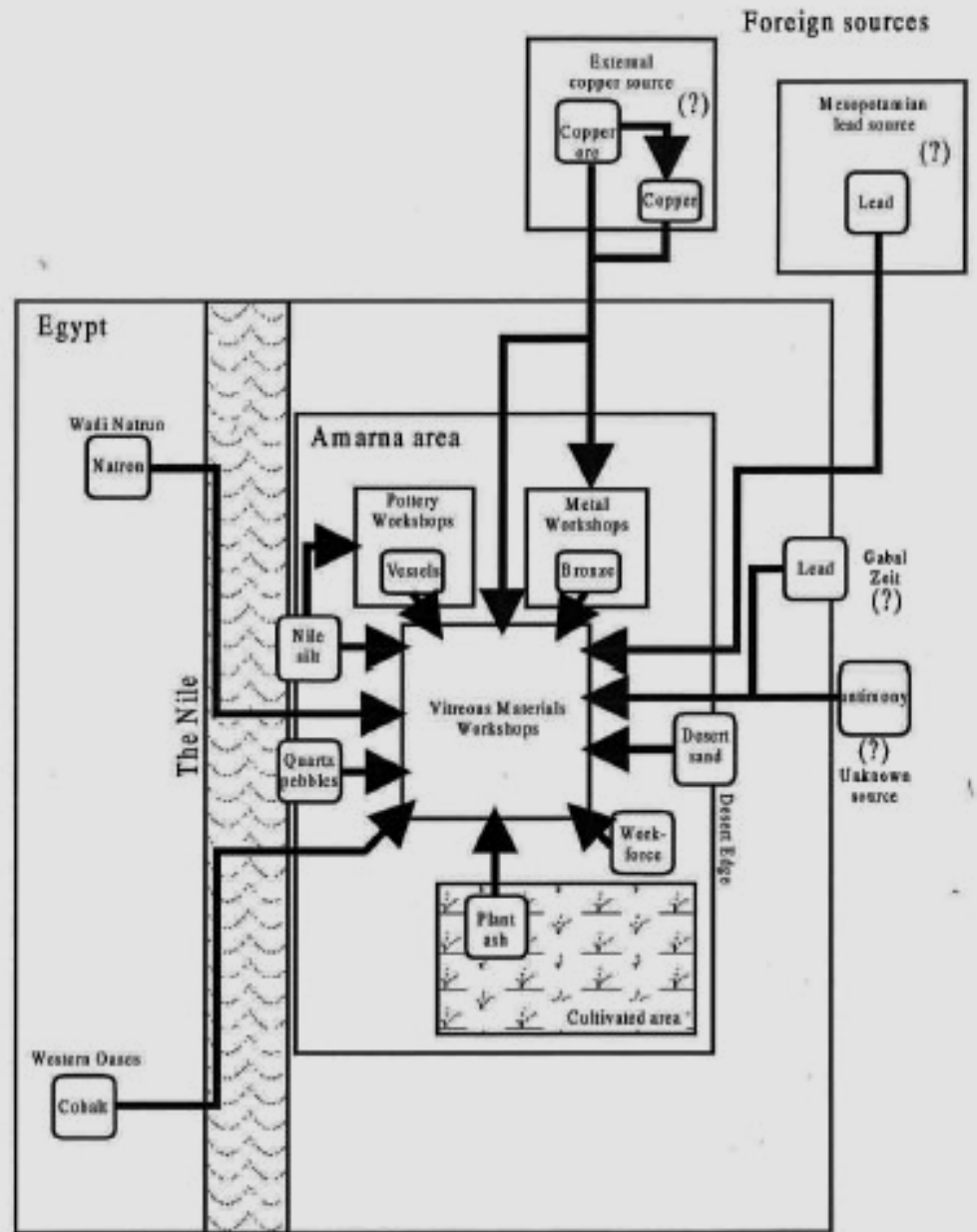
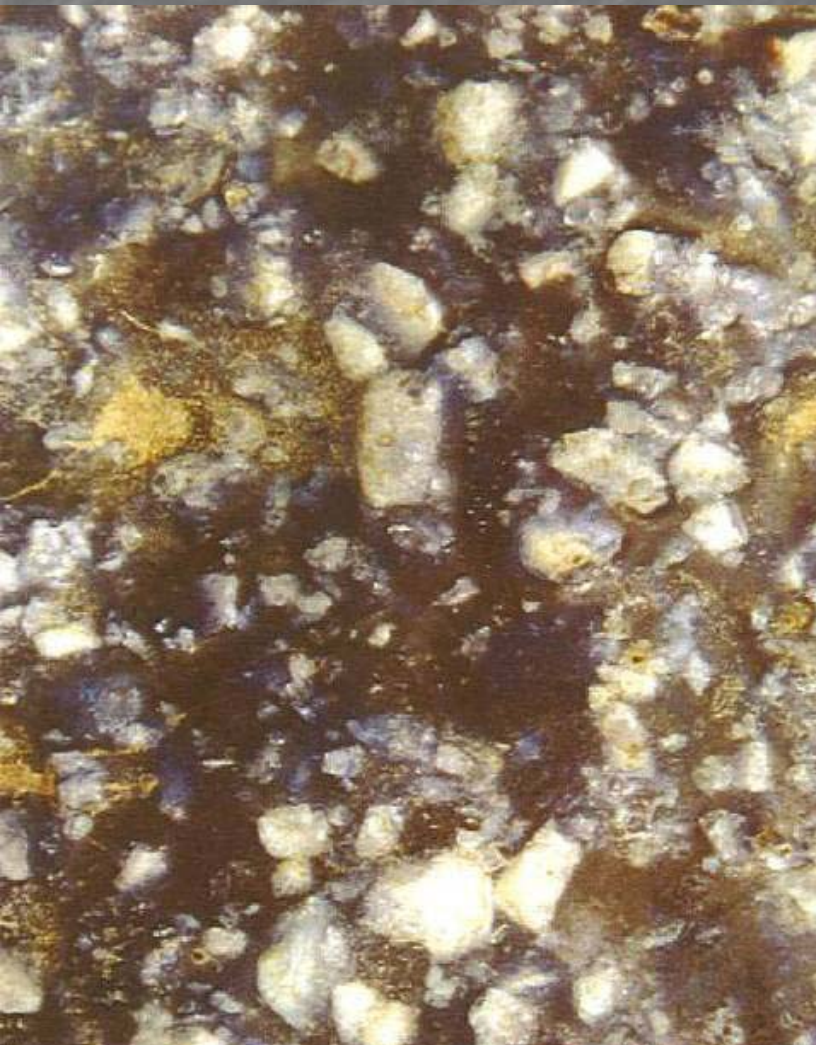


Figure 5-15 : Summary of the sources of the raw materials for the Amarna vitreous materials workshops. All sources within the square marked "Amarna" are those thought to be within the precincts of Akhetaten, those in the square marked "Egypt" under the control (to a greater or lesser extent) of Egypt, those outside this are foreign imports.



Figure 7-6 : Fired clay moulds for the making of small faience objects. Moulds such as these were found widely over Amarna by all excavators, although the current study suggests they tend to cluster around faience making areas. Clockwise from top left: a mould still filled with faience paste, mould for a ring shank, for an ankh amulet, a lotus bud, a thistle head and a wadjet eye. Copyright of the Petrie Museum of Egyptian Archaeology, clockwise from top left, UC 23959, UC 25137, UC 24042, UC 24221, UC 23911 and UC 1942.

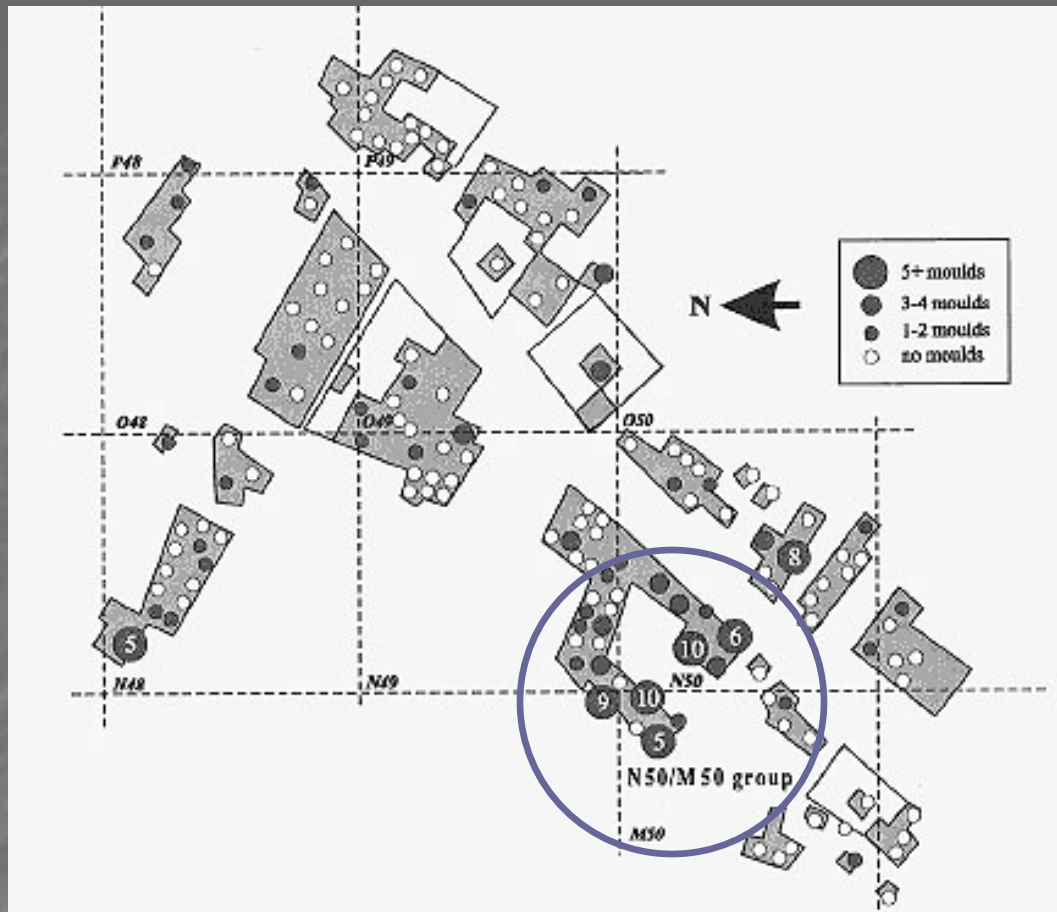


Figure 7-8 : Moulds in Main City South - Results from the search of the excavation reports for the moulds associated with each house. Number of moulds as key.

Mould Distribution in Main City South
Concentration marks N50/M50 group

House of Thutmose the Sculptor

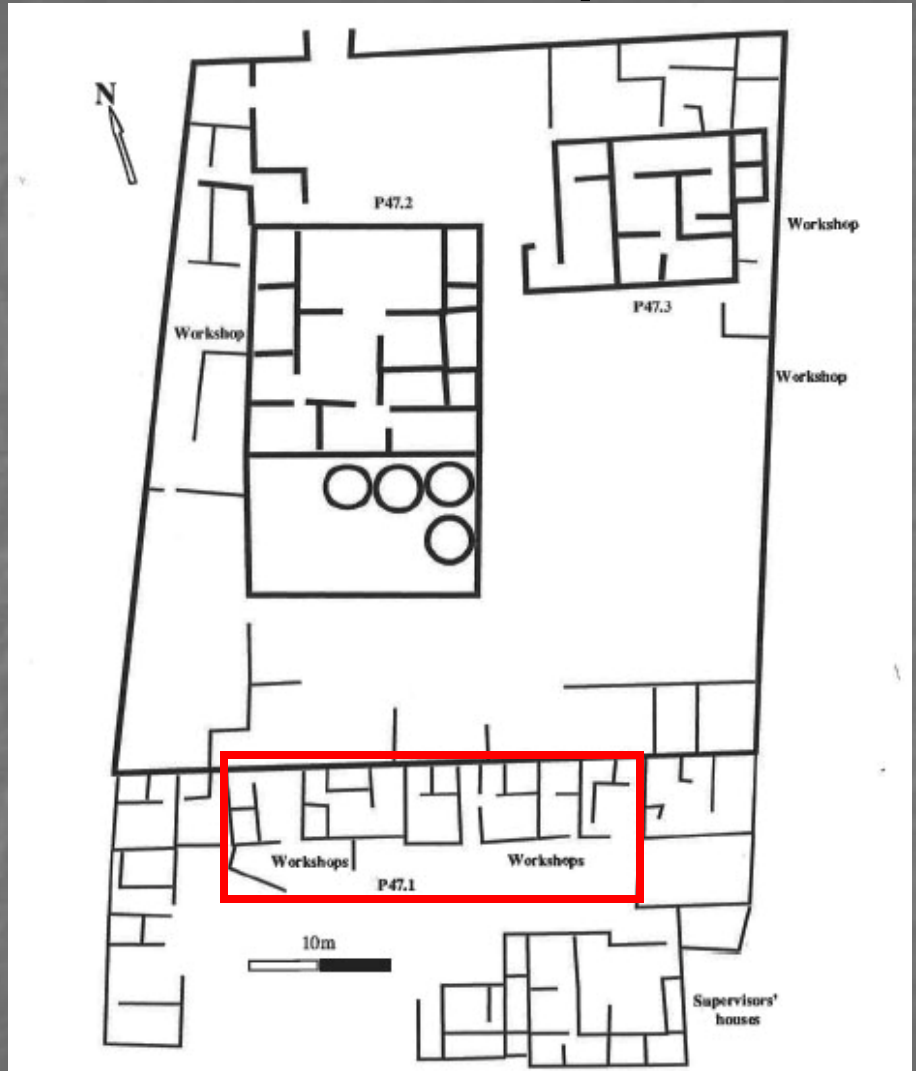
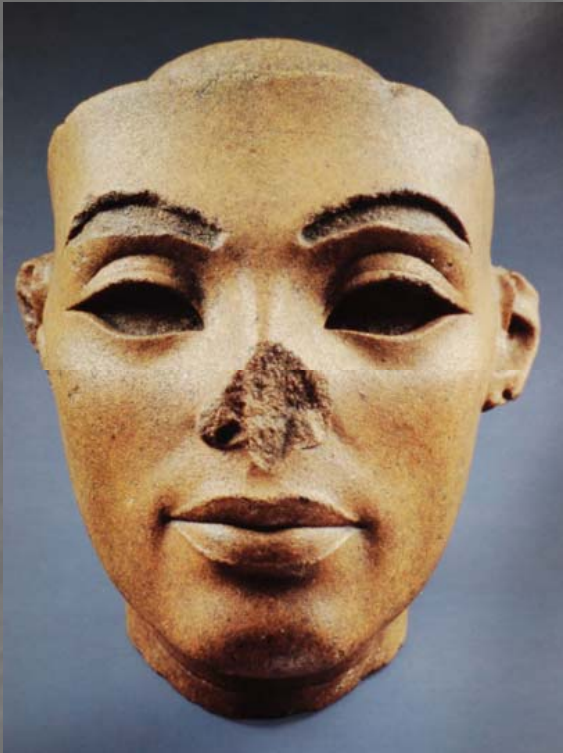
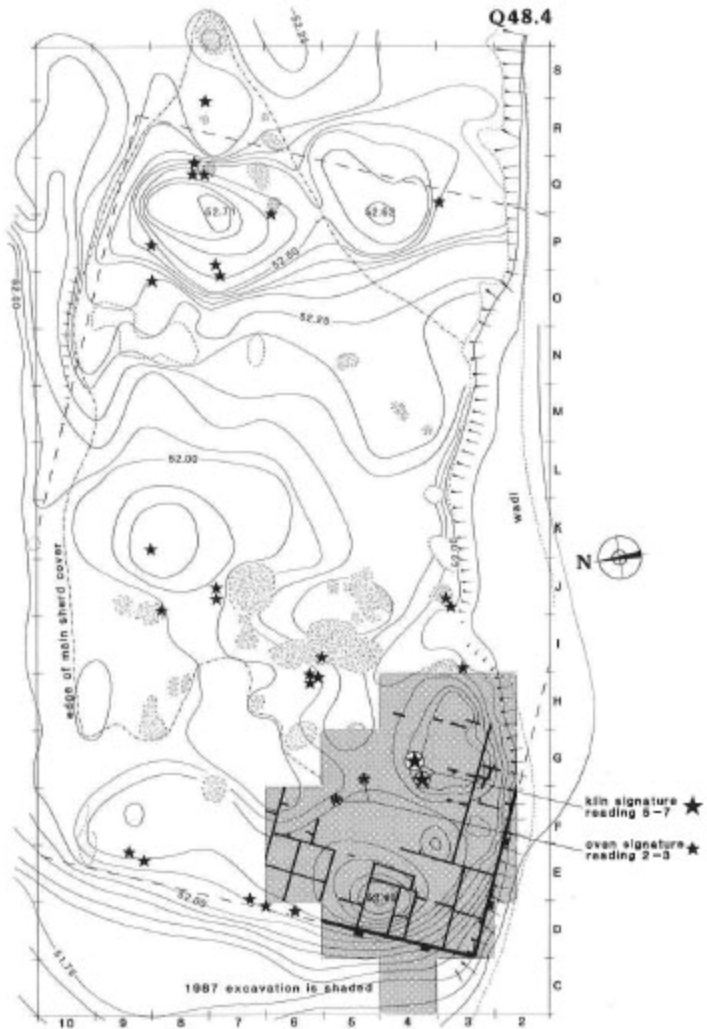
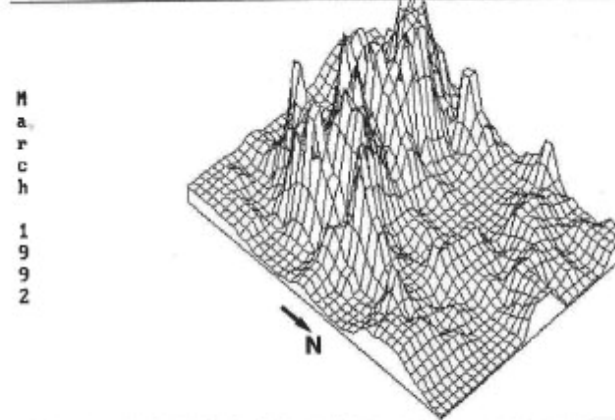


Figure 7-15 : P47.1-3, the house of the sculptor Thutmose, a house in the Main City South, showing the house of Thutmose itself (P47.2), the houses of the younger sculptors (P47.3) and the small combined living and working accommodation of the lower ranking workers (P47.1), where all the faience moulds were found. Also shown is what is thought by Arnold (1997) to be the supervisors' houses. Adapted from Boruchovitz and Ricke (1980).

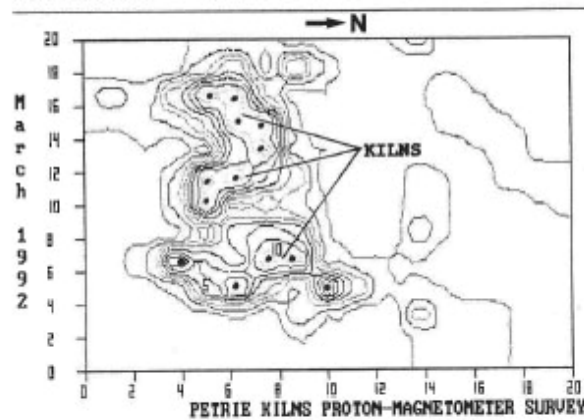
Geophysical Magnetometry Survey



PC-Presentation Graphics
3D Surfplot EGYPT EXPLORATION SOCIETY AMARNA 1992



PC-Presentation Graphics
Line Contours EGYPT EXPLORATION SOCIETY AMARNA 1992



07-89-1992
ampkw92

Figure 6.1. Contour map of site Q48.4 on which has been plotted the results of the proton-magnetometer survey.

Figure 6.4. Magnetometer survey grid in building O45.1, and plots of the 1992 survey.

Pottery Workshop, House of Ramose

Kilns at house P47.20

7.3 The kilns

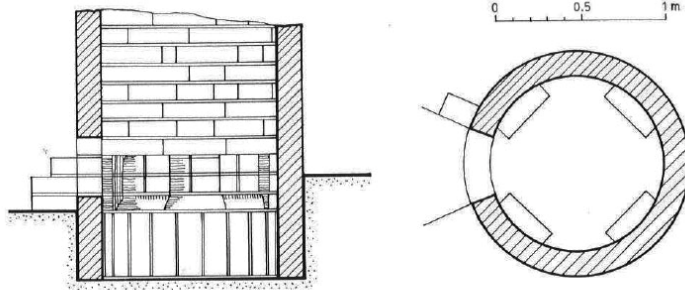


Figure 7.2. Borchardt and Ricke's reconstruction of the kiln in Raum 10 (after Borchardt and Ricke 1980: 128-9, Abb. 17).



Figure 7.6. View westwards in Raum 10 after final cleaning of kiln.

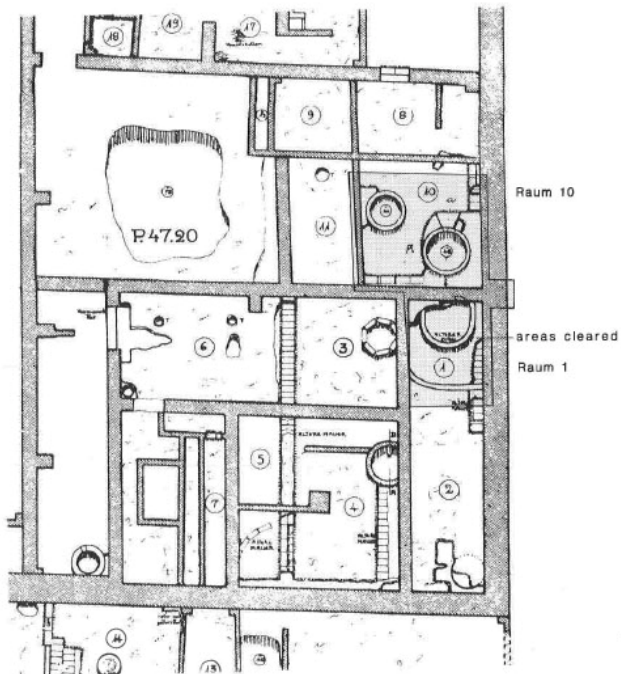


Figure 7.1. Borchardt and Ricke's plan of the south-east corner of P47.20 (after Borchardt and Ricke 1980: Plan 23). The area of the 1987 re-excavation is marked.

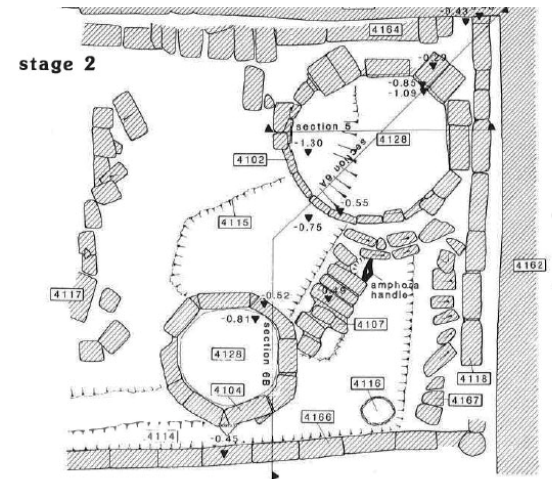


Figure 7.3 (above) and 7.4 (below). Plan of Raum 10 after removal of sand and after further cleaning (originals by P. Nicholson).

Experimental Archaeology



Figure 8.11. The vessels for firing 3, before being covered with sherds.



Figure 8.17. Throwing clean fuel onto the kiln top in order to decarbonise it. This marks the final stage in the firing of the kiln.

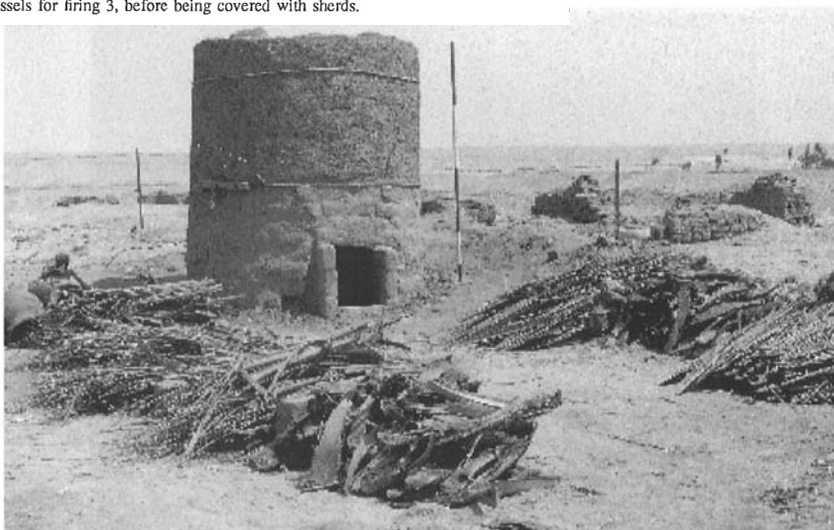


Figure 8.14. The 1992 kiln just before firing. The fuel can be seen in the foreground, divided into weighed piles according to which part of the branch it came from.

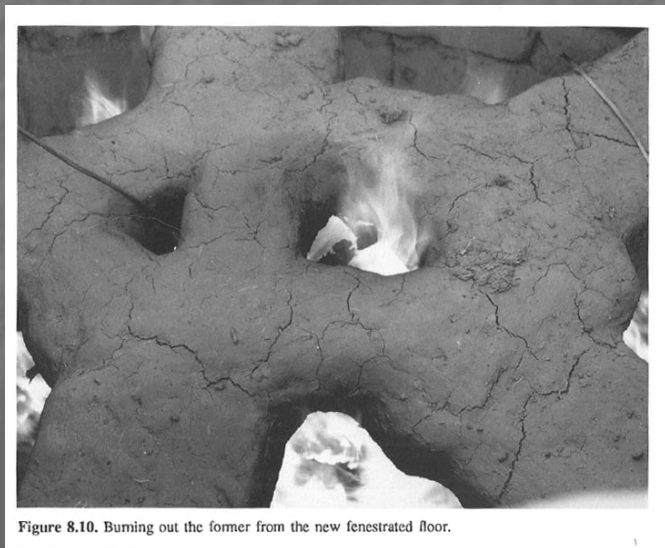


Figure 8.10. Burning out the former from the new fenestrated floor.