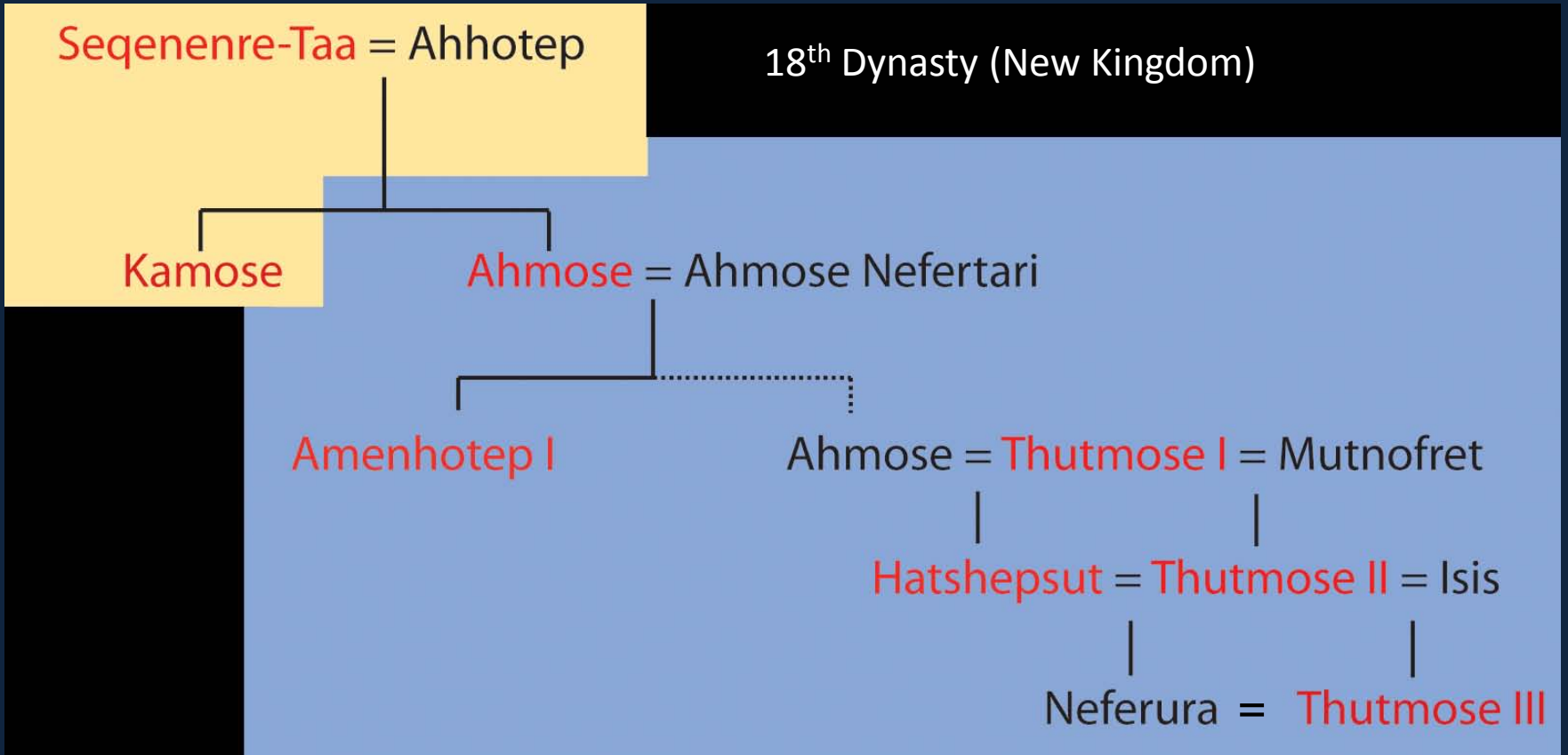


Genealogy of the early 18th Dynasty

17th Dynasty (Second Intermediate Period)



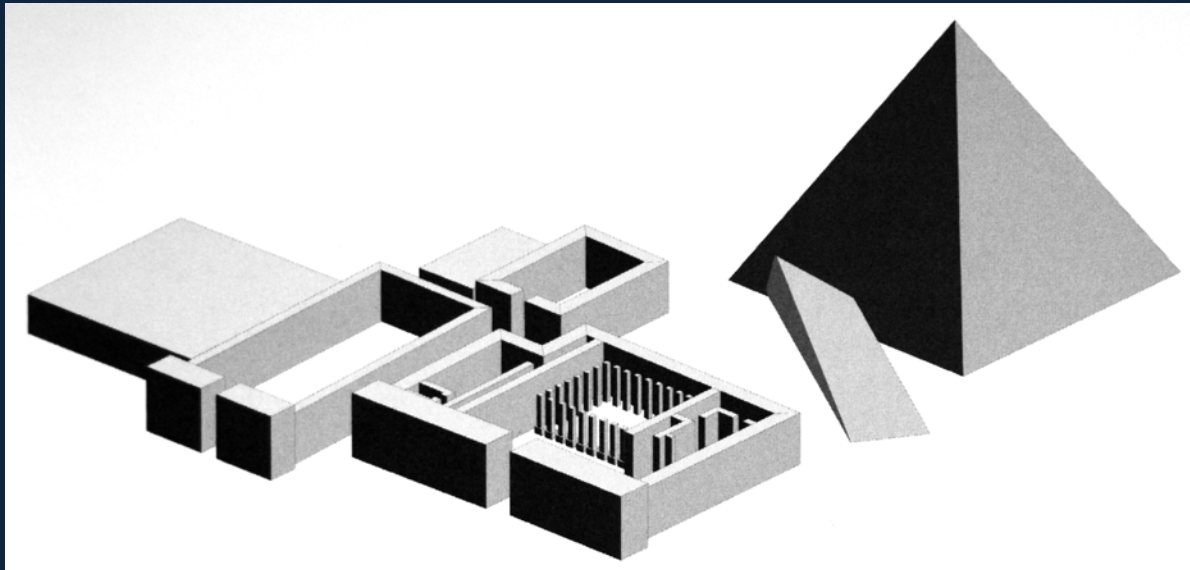
Red indicates people who ruled as kings



Ahmose: first king of the 18th Dynasty
Son of Seqenenre and Ahhotep
Probably brother of Kamose

Reunifies Egypt, extends warfare outside of
Egypt

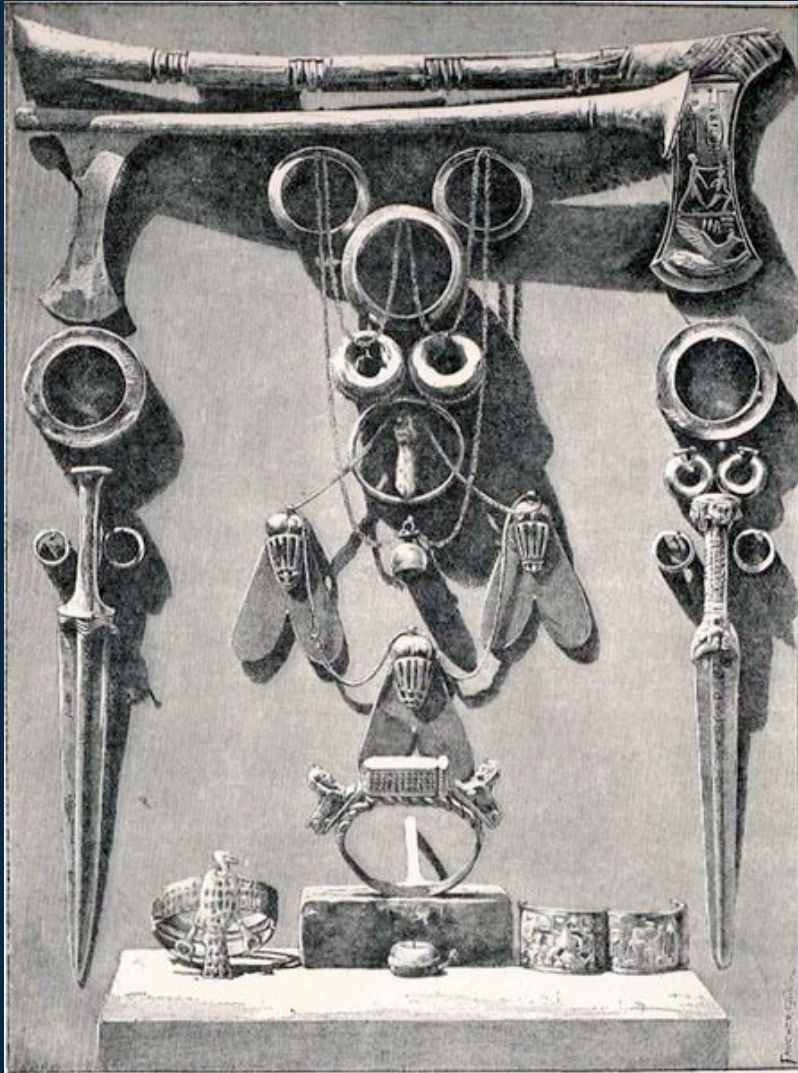
Ahmose Pyramid complex at Abydos





Fragments of war-related reliefs from Ahmose's mortuary temple at Abydos

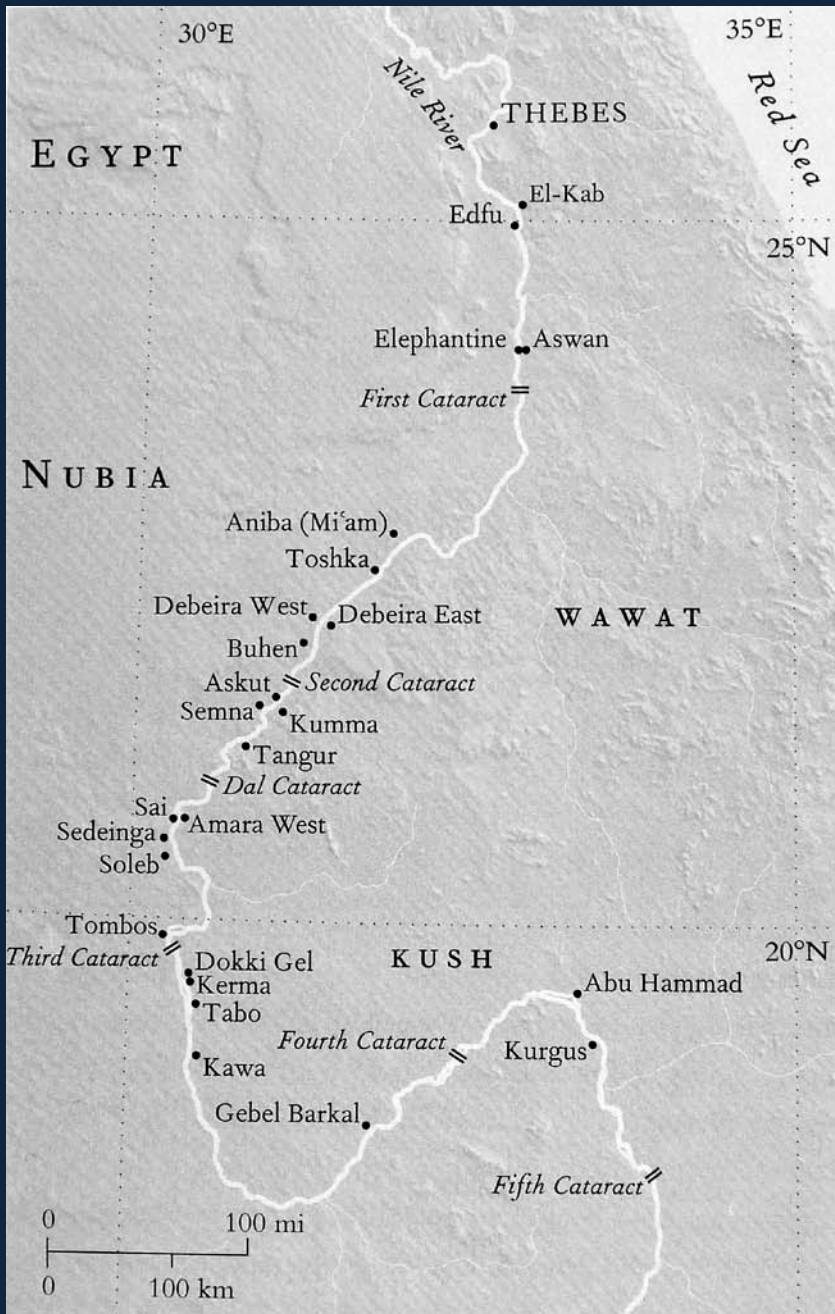
Ahhotep: women as regents and warriors





Ahmose-Nefertari, wife of Ahmose
First "God's Wife of Amun"



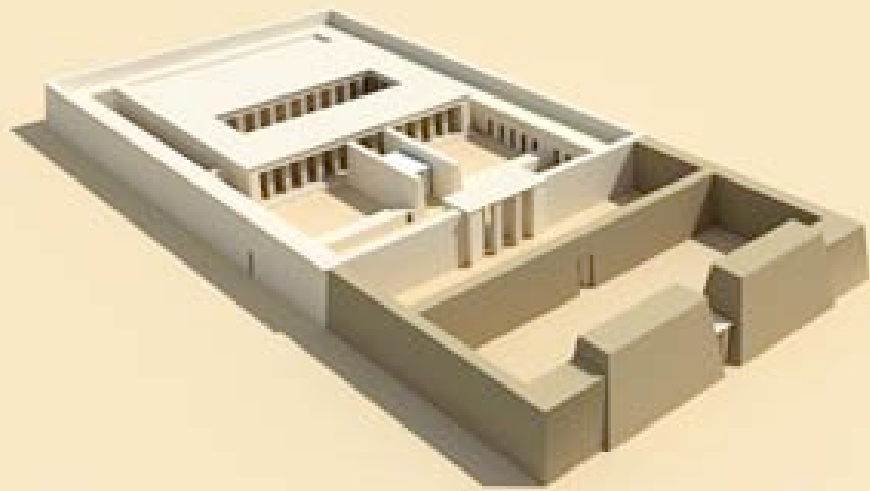


Amenhotep I statue from Sai Island





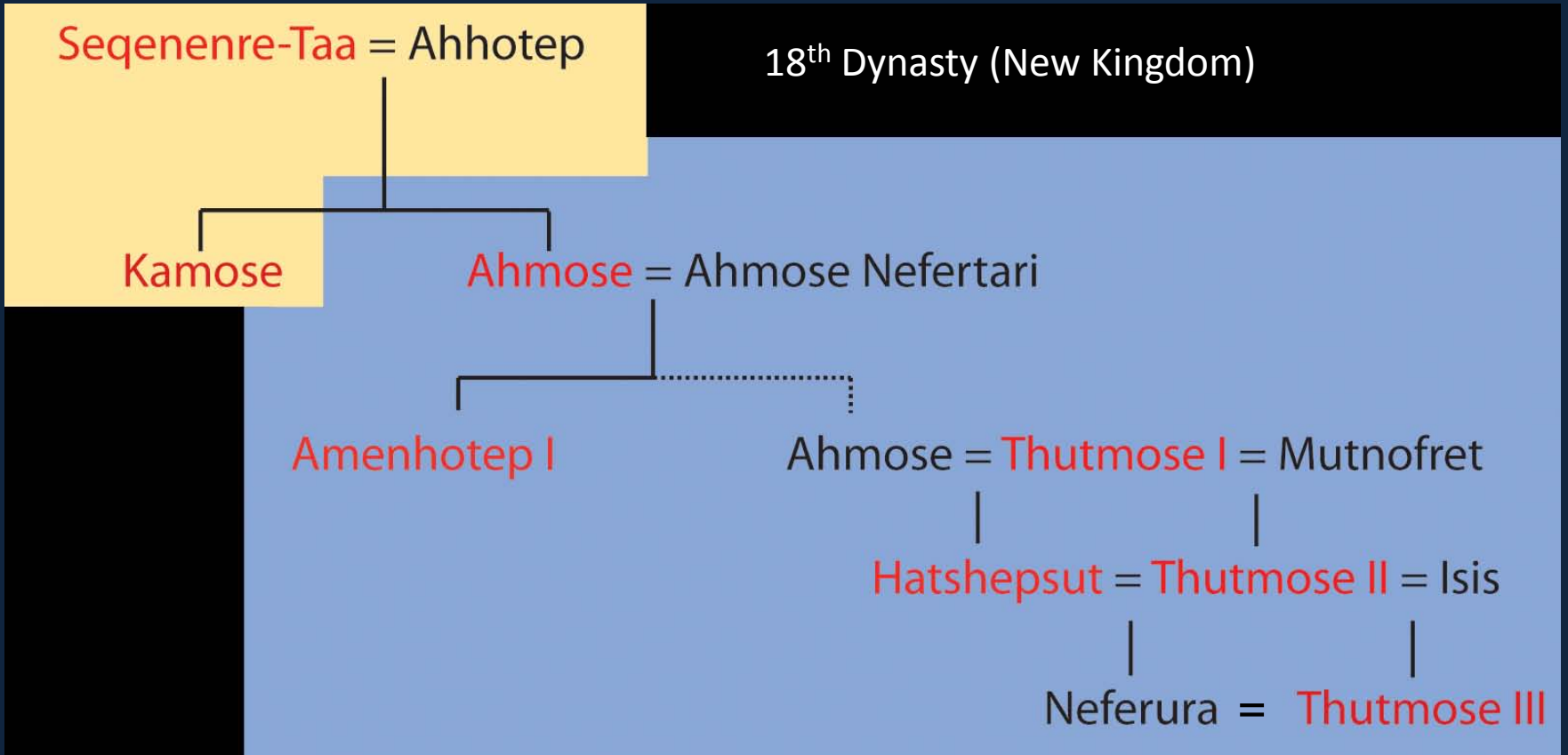
Karnak: Temple of Amun in the New Kingdom



Genealogy of the early 18th Dynasty

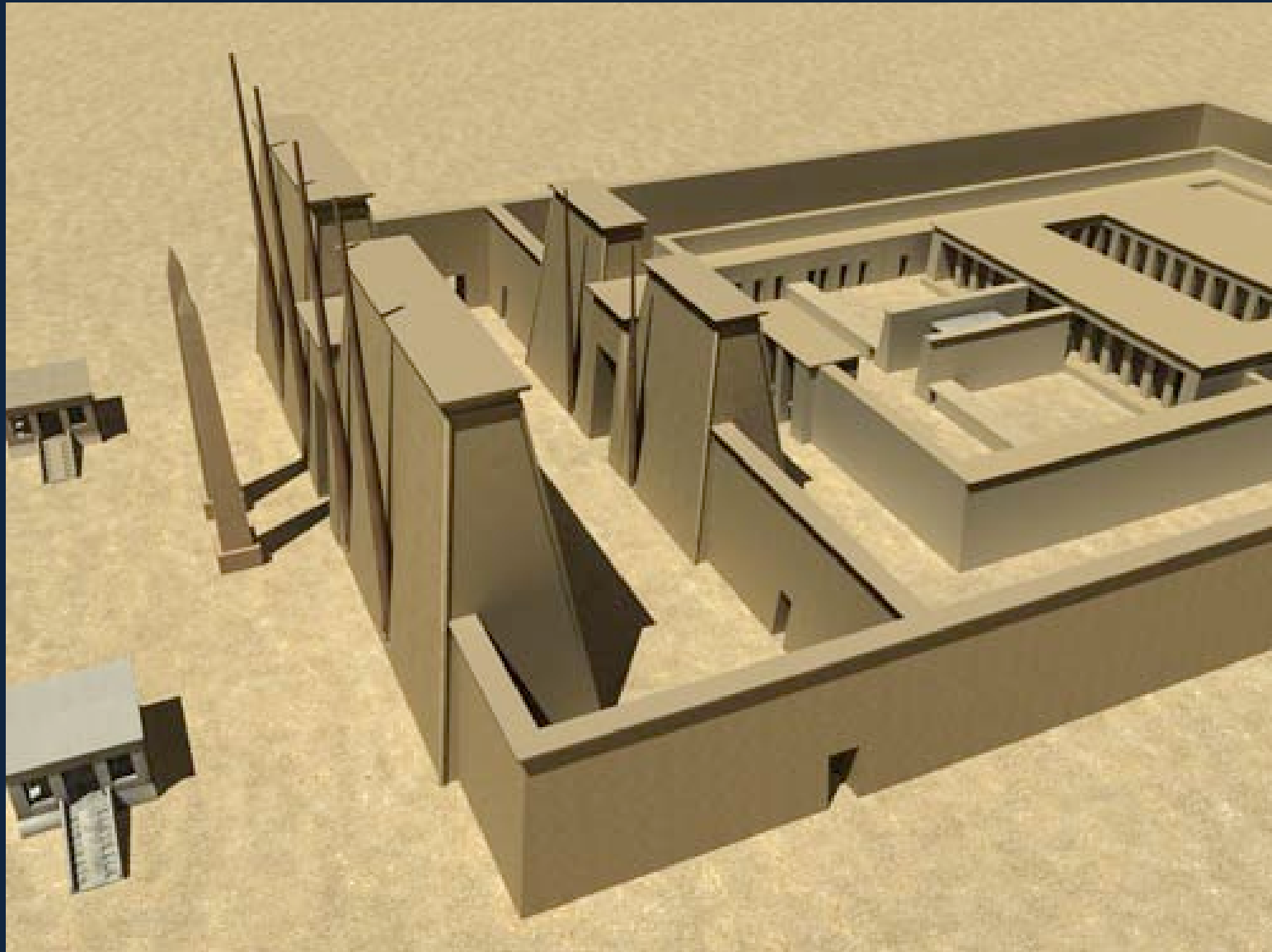
17th Dynasty (Second Intermediate Period)

18th Dynasty (New Kingdom)



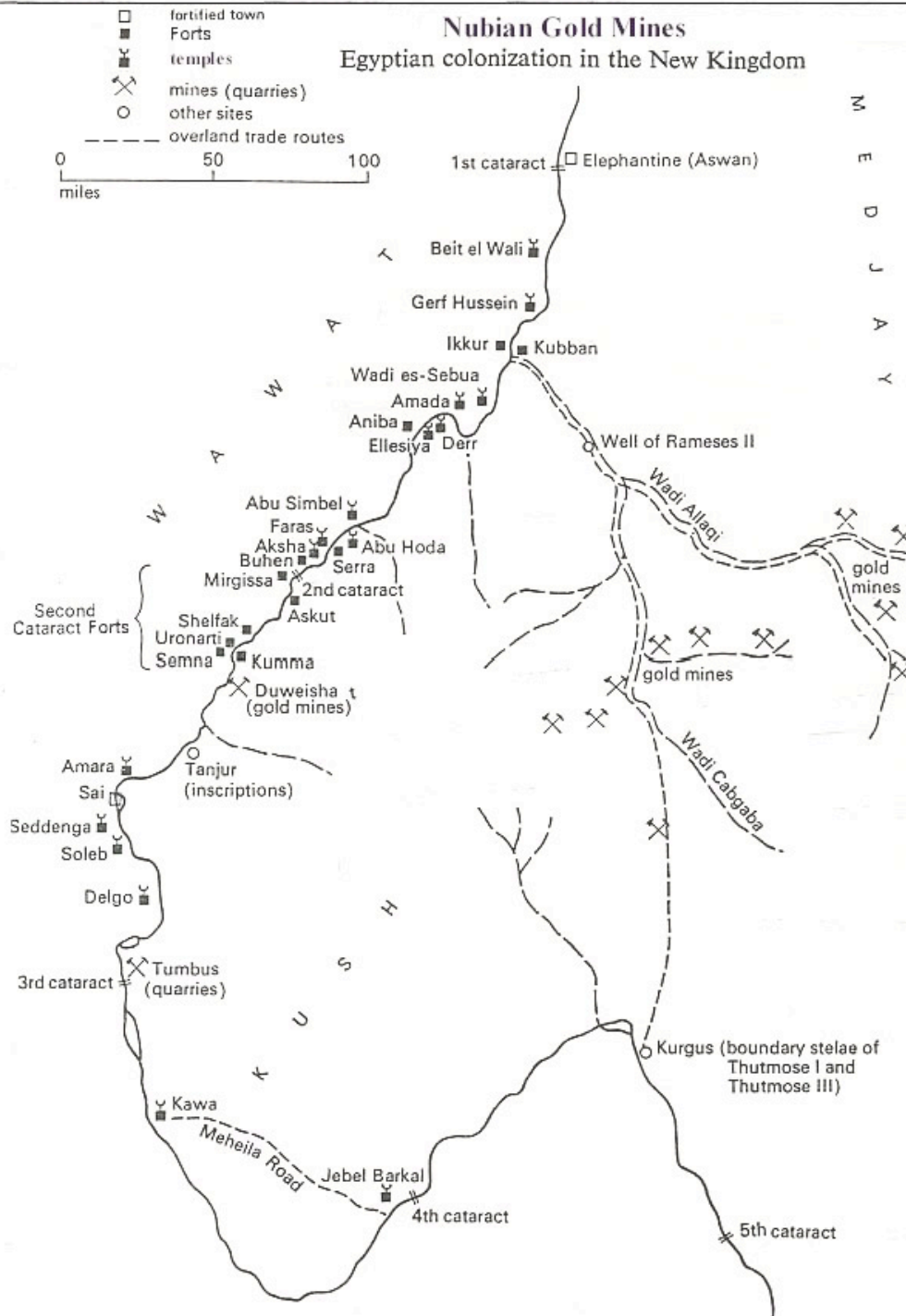
Red indicates people who ruled as kings





Nubian Gold Mines

Egyptian colonization in the New Kingdom

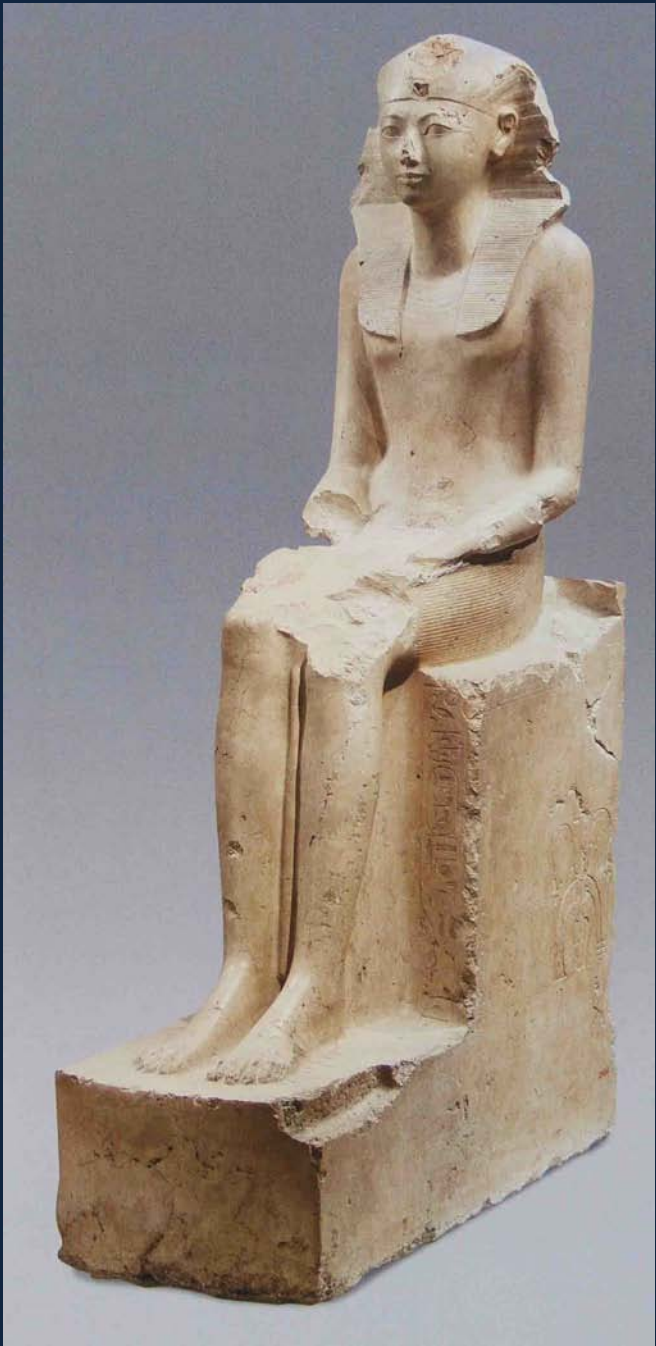






Thutmose II
from a festival
court at Karnak











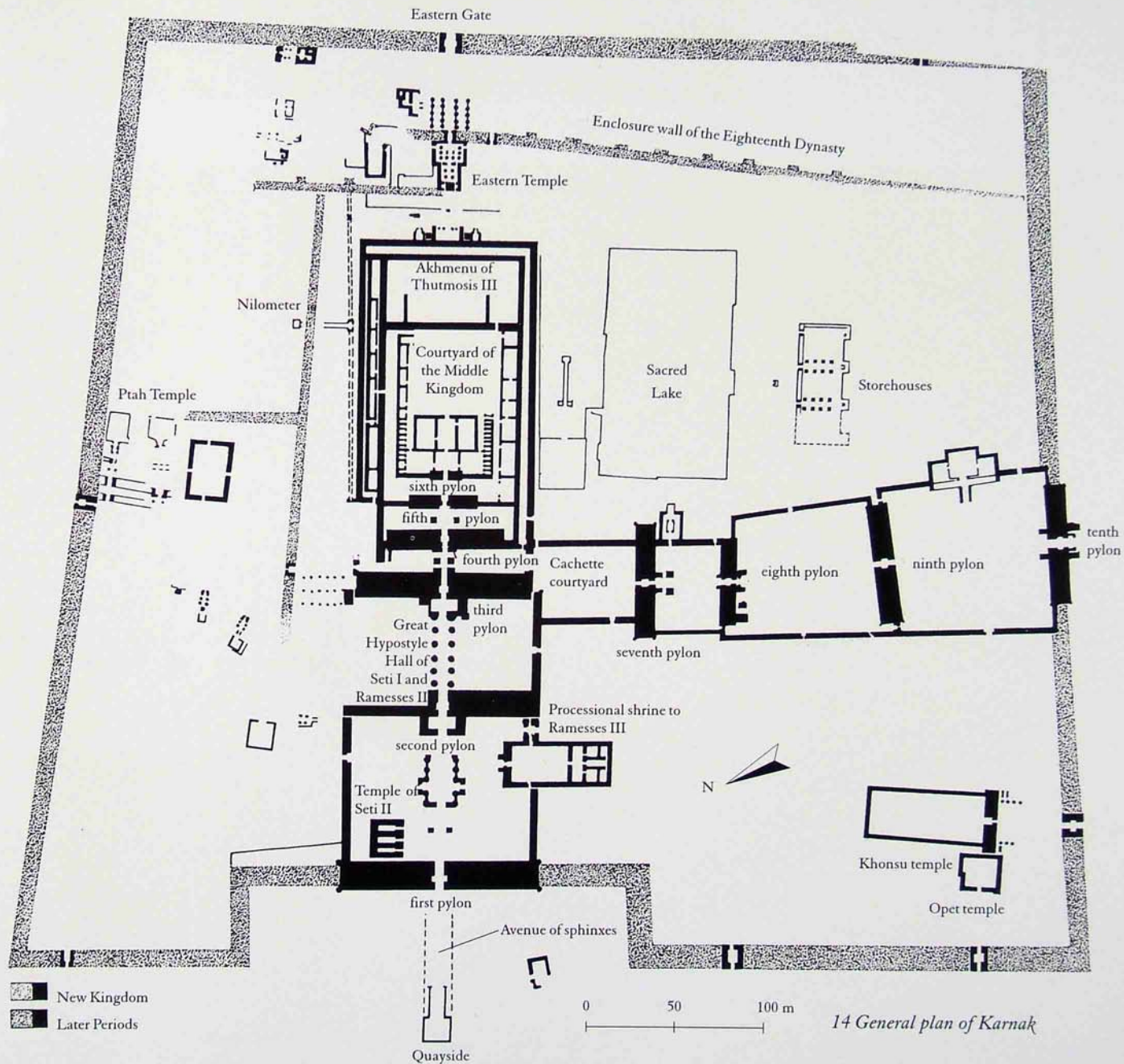
© 2009 ORION - ME
Image © 2009 DigitalGlobe
© 2009 AND
© 2009 Gisrael

© 2009 Google

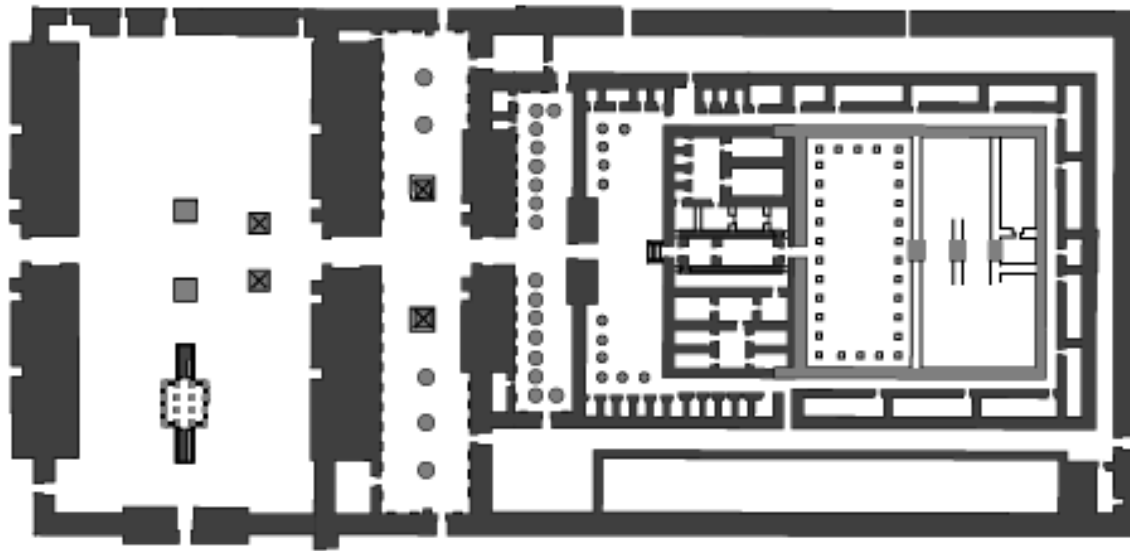
Imagery Date: Mar 5, 2005

25°43'04.15" N 32°39'31.06" E elev 249 ft

Eye alt 2648 ft



14 General plan of Karnak



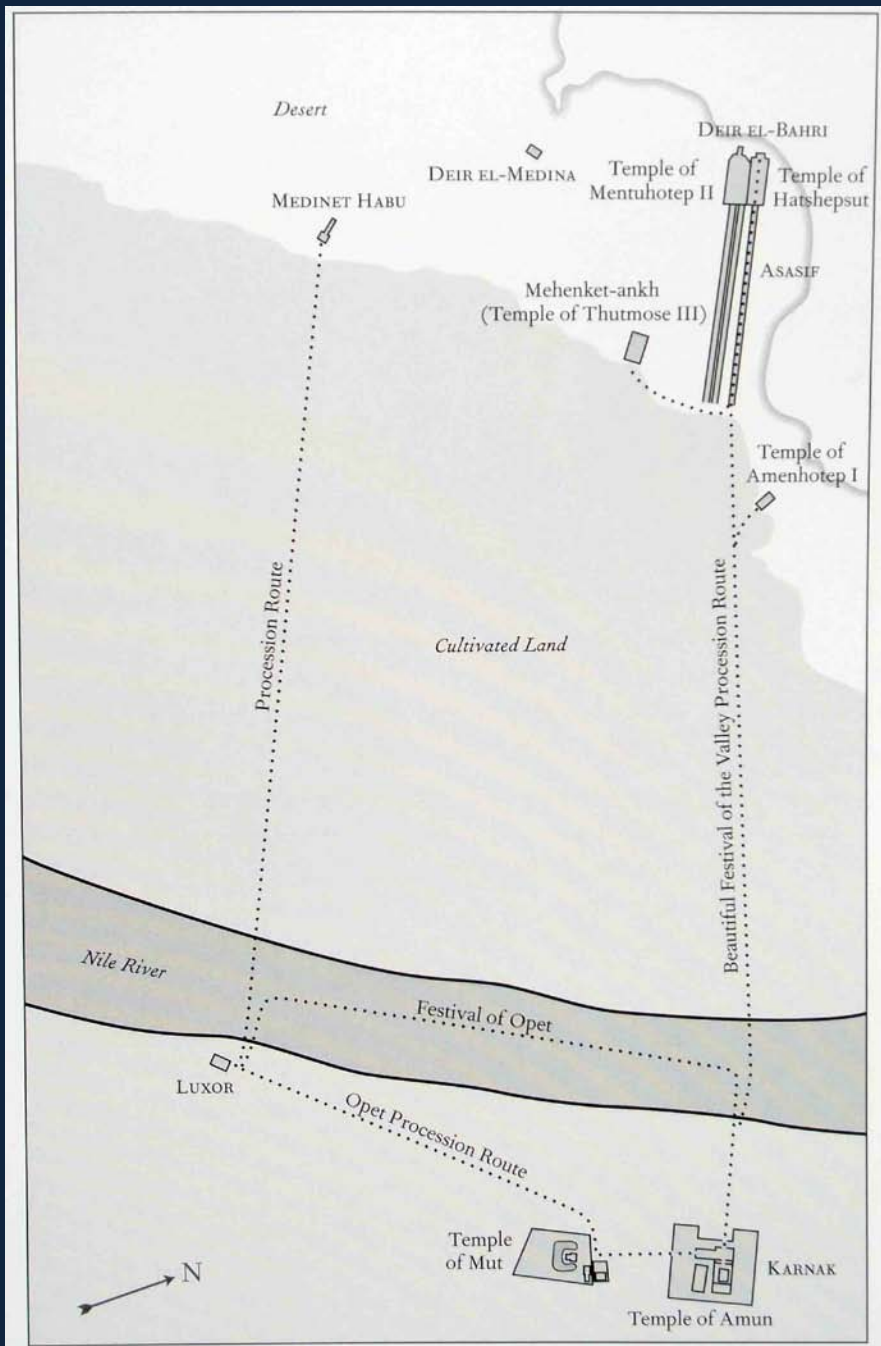
Karnak in the reign
of Hatshepsut







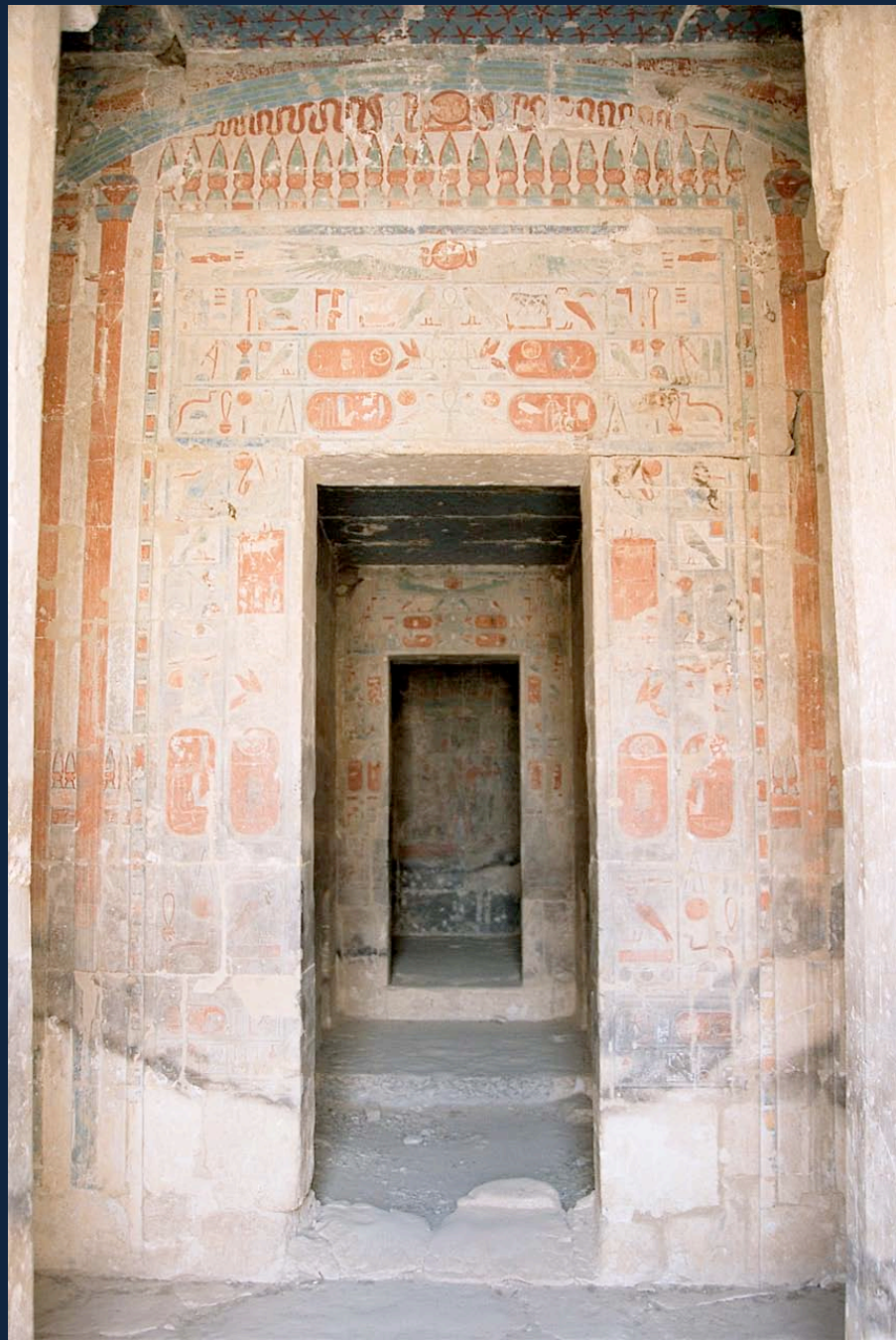






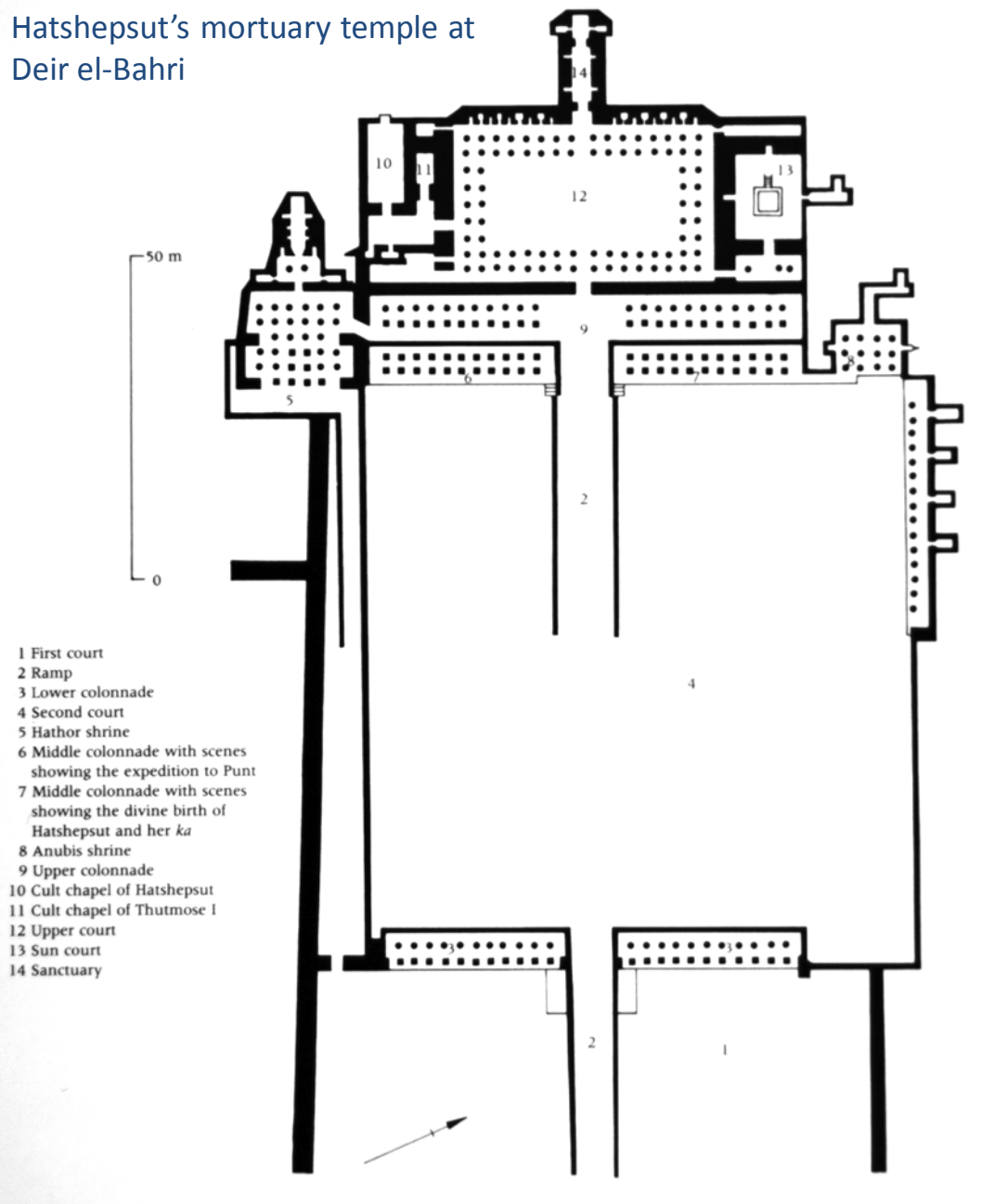


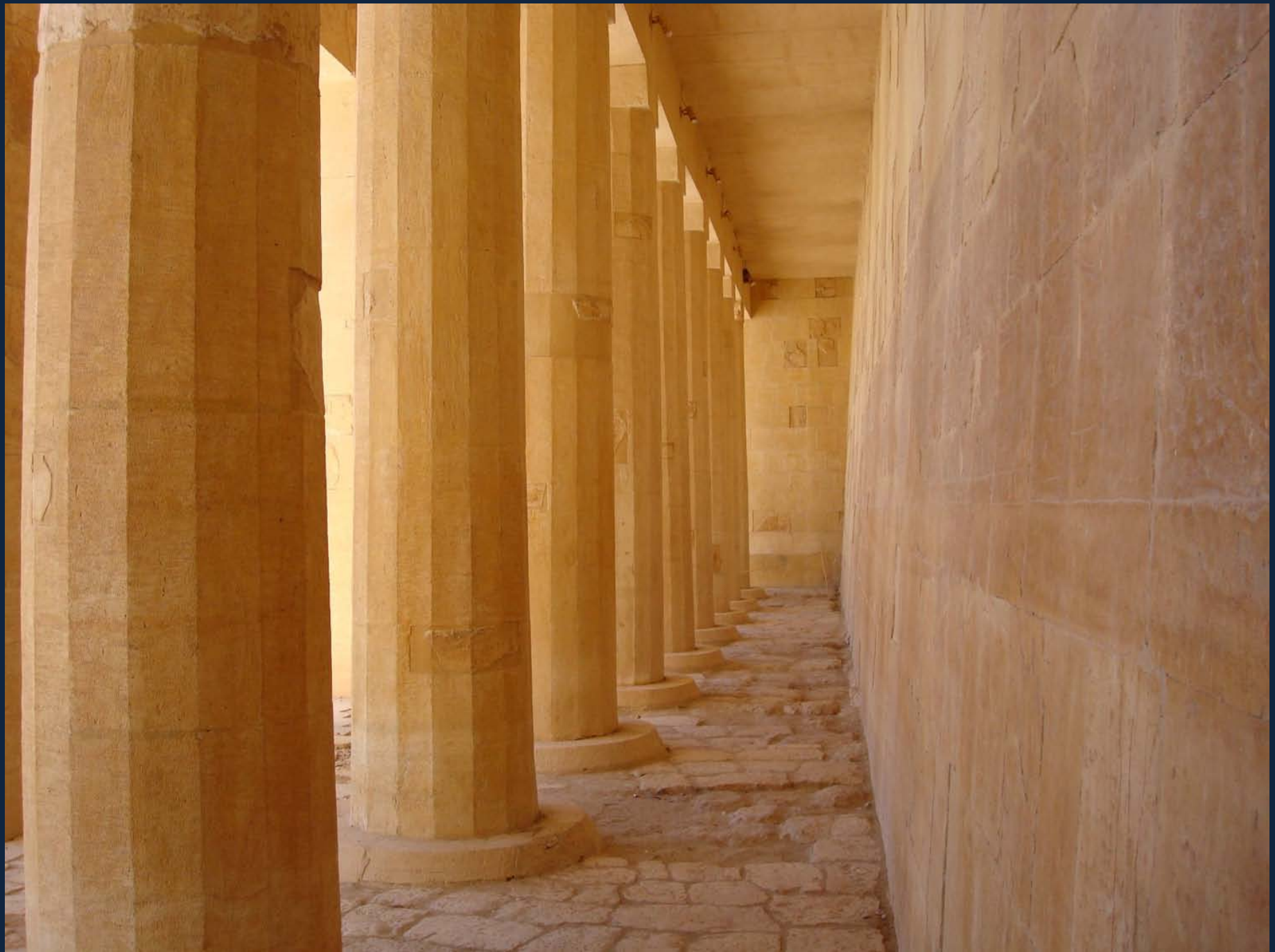






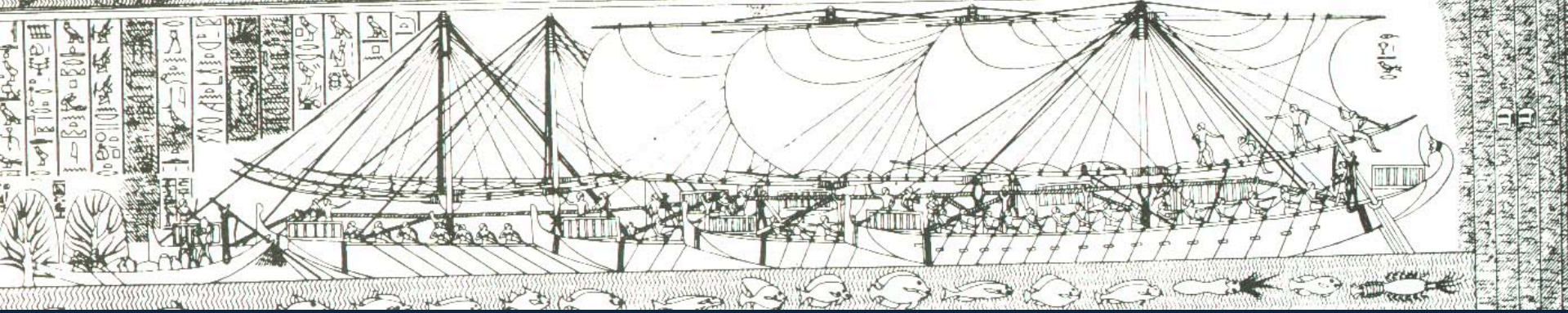
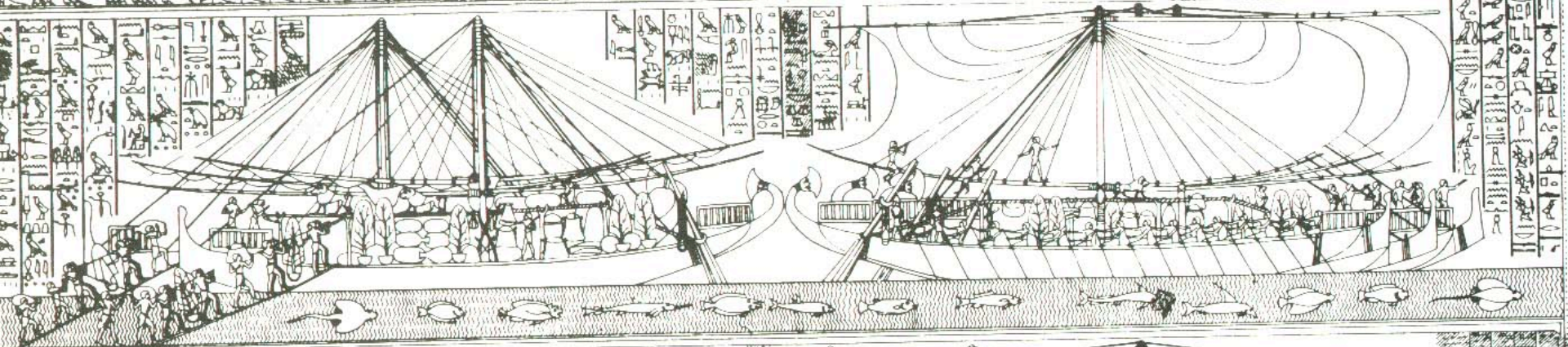
Hatshepsut's mortuary temple at
Deir el-Bahri



















© 2009 ORION-ME
Image © 2009 DigitalGlobe
© 2009 AND
© 2009 GIsrael

2008 Google

Imagery Date: Dec 26, 2005

25°44'22.13" N 32°36'14.17" E elev 708 ft

Eye alt 4681 ft

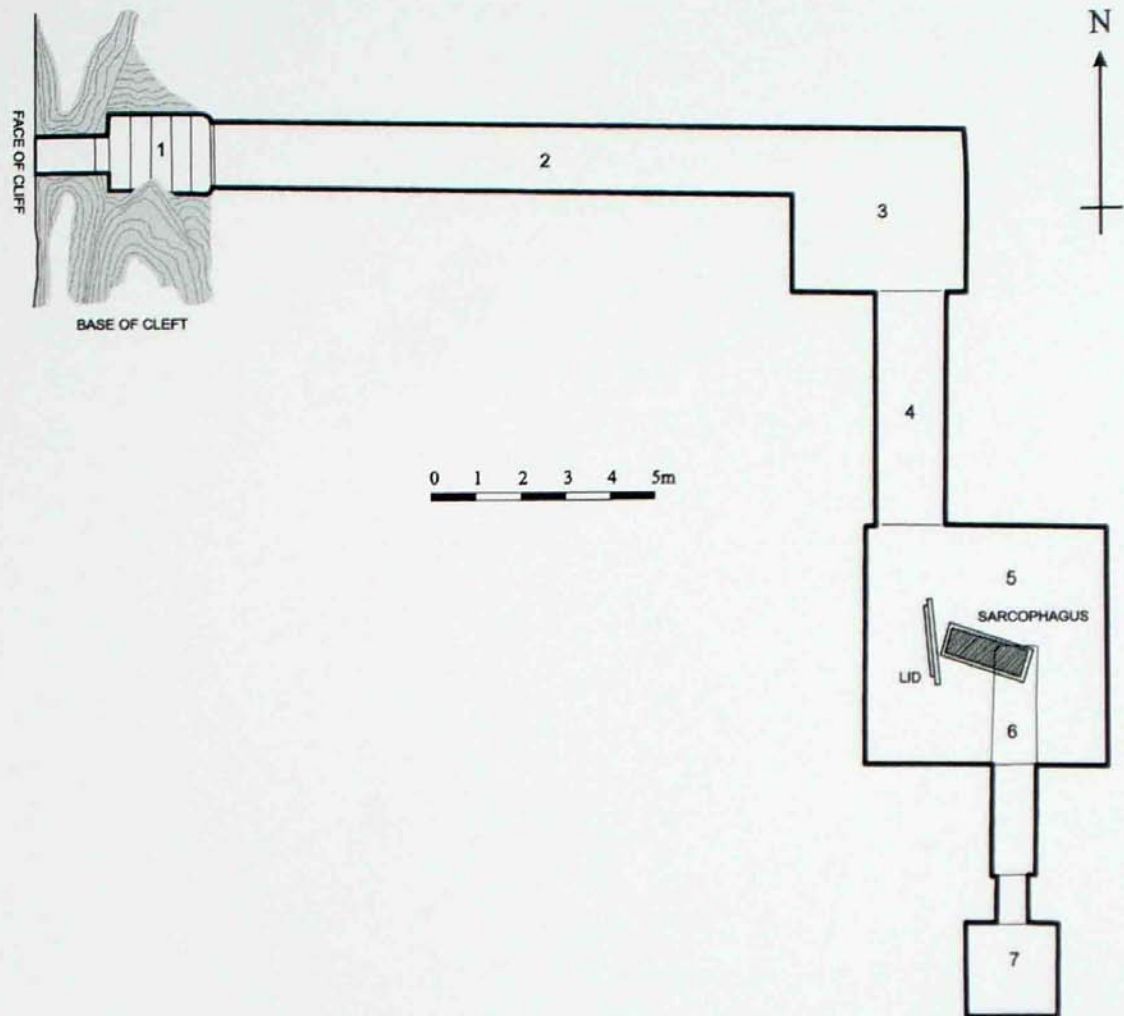


Fig. 73. Plan of Hatshepsut's cliff tomb in Gabbanat el-Qurud, Wadi A1, western Thebes. Drawing by Julia Jarrett

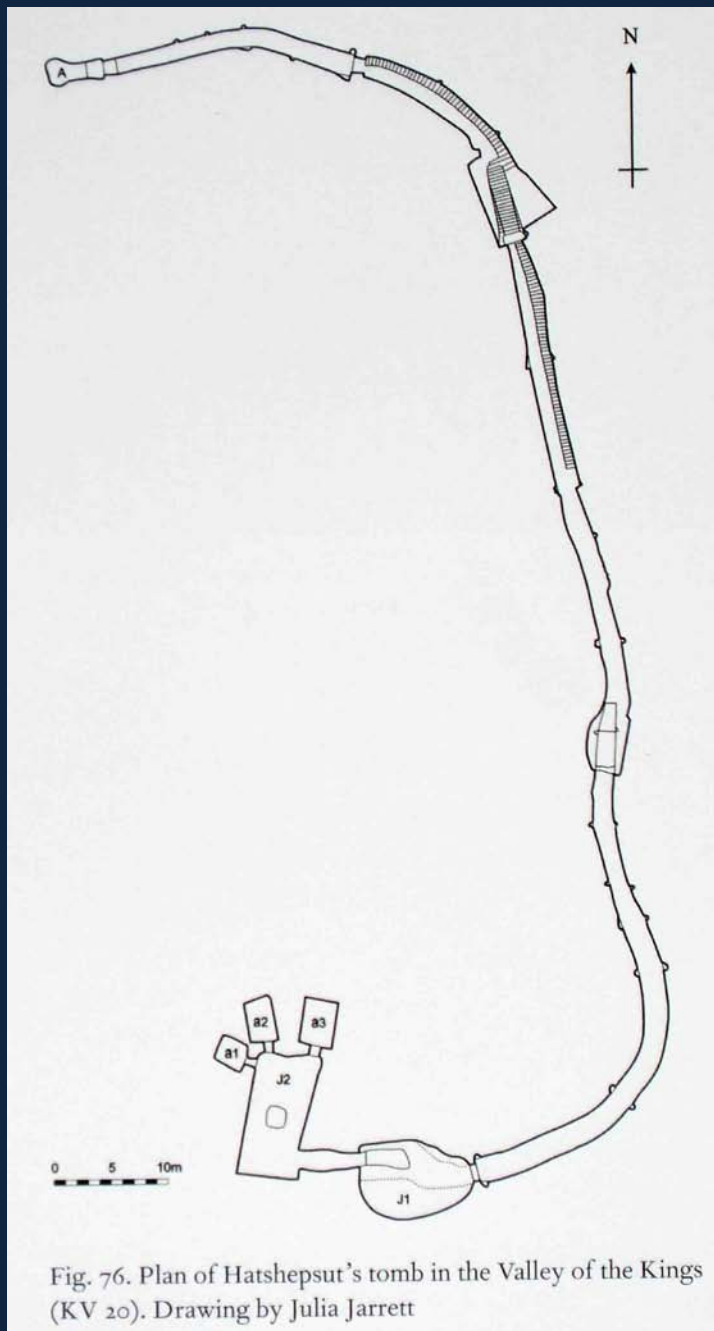
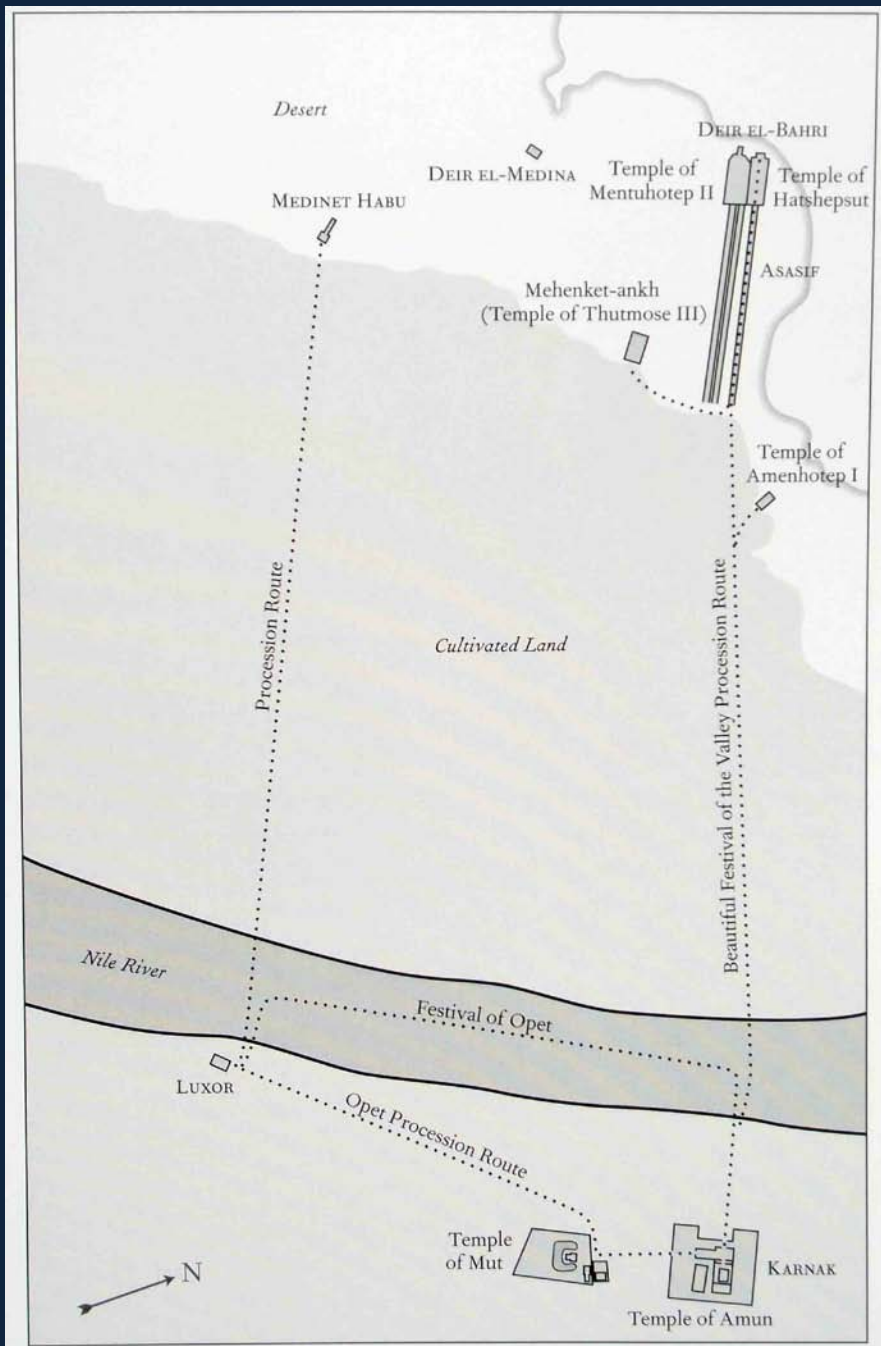


Fig. 76. Plan of Hatshepsut's tomb in the Valley of the Kings (KV 20). Drawing by Julia Jarrett







الأقصر Luxor

© 2009 ORION-ME
Image © 2009 DigitalGlobe
© 2009 AND
© 2009 Gisrael

©2008 Google

Imagery Dates: Mar 5, 2005 – Apr 28, 2005 25°42'35.61" N 32°38'57.38" E elev 270 ft

Eye alt 9148 ft



Ad Dayr al Bahri

الأقصر Luxor

© 2009 ORION-ME
Image © 2009 DigitalGlobe
© 2009 AND
© 2009 Gisrael

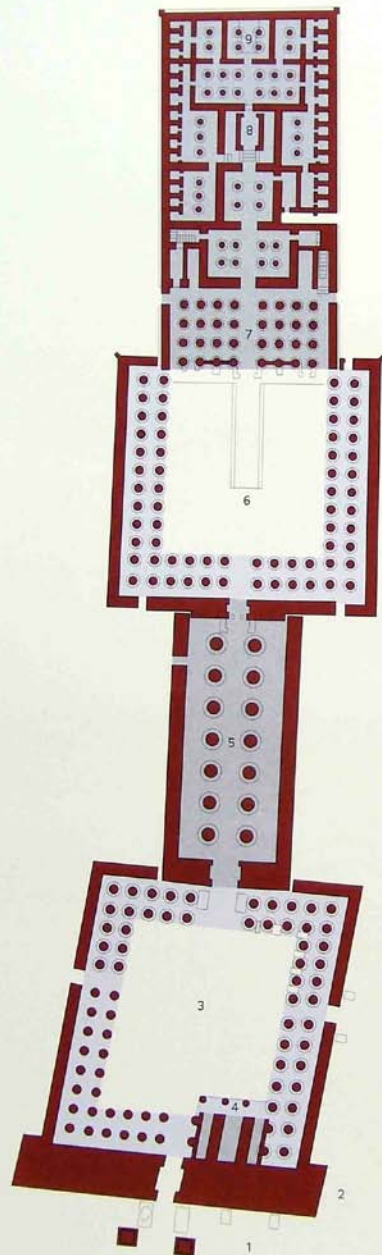
© 2009 Google

Imagery Date: Dec 26, 2005

25°43'19.09" N 32°37'20.00" E elev 256 ft

Eye alt 24994 ft





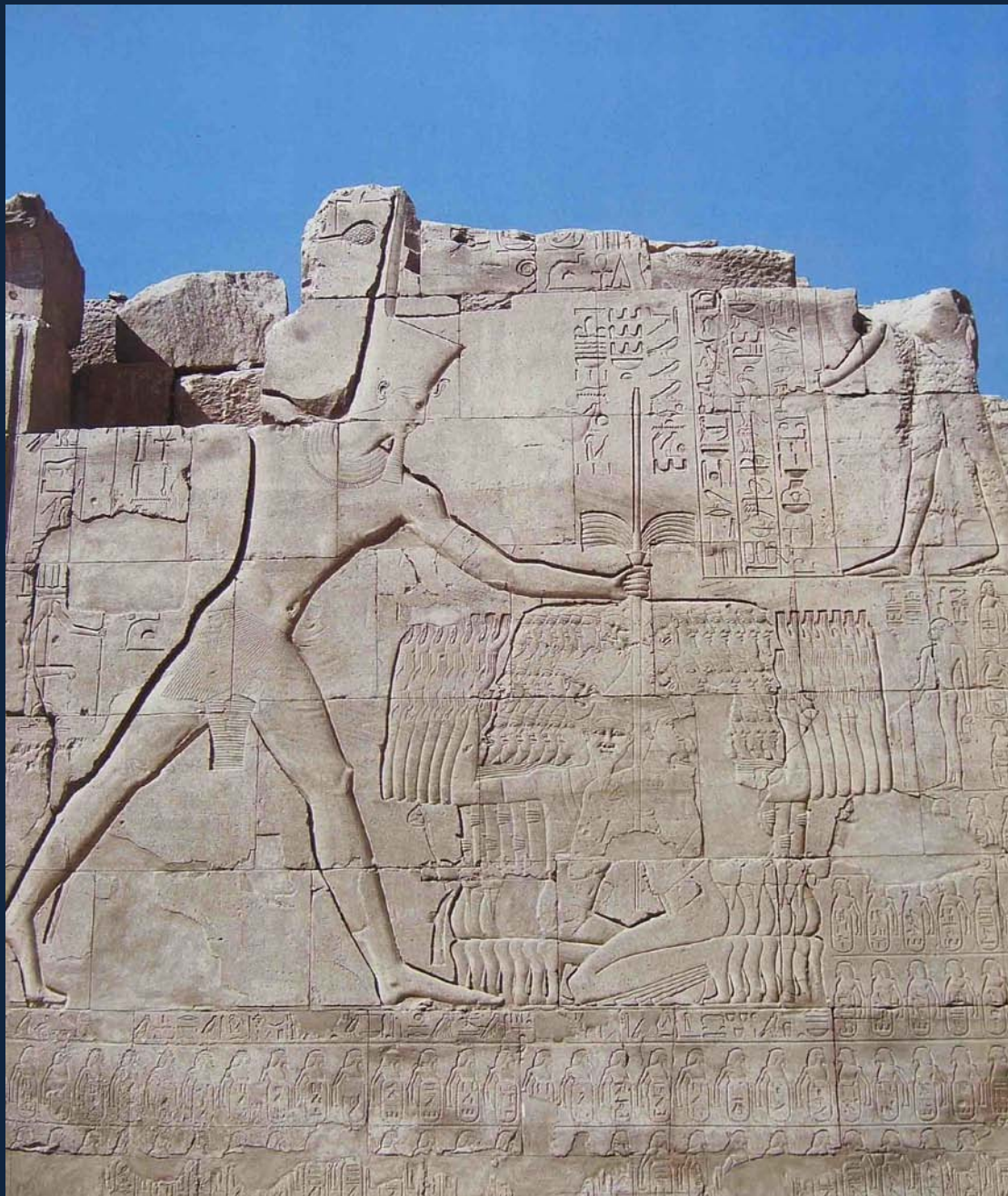
Plan of the Temple of Luxor

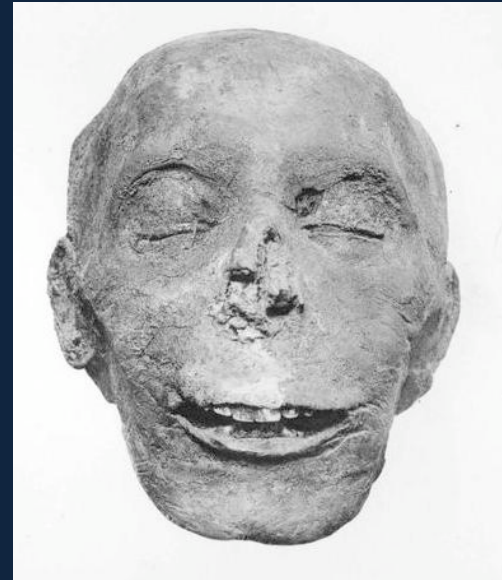
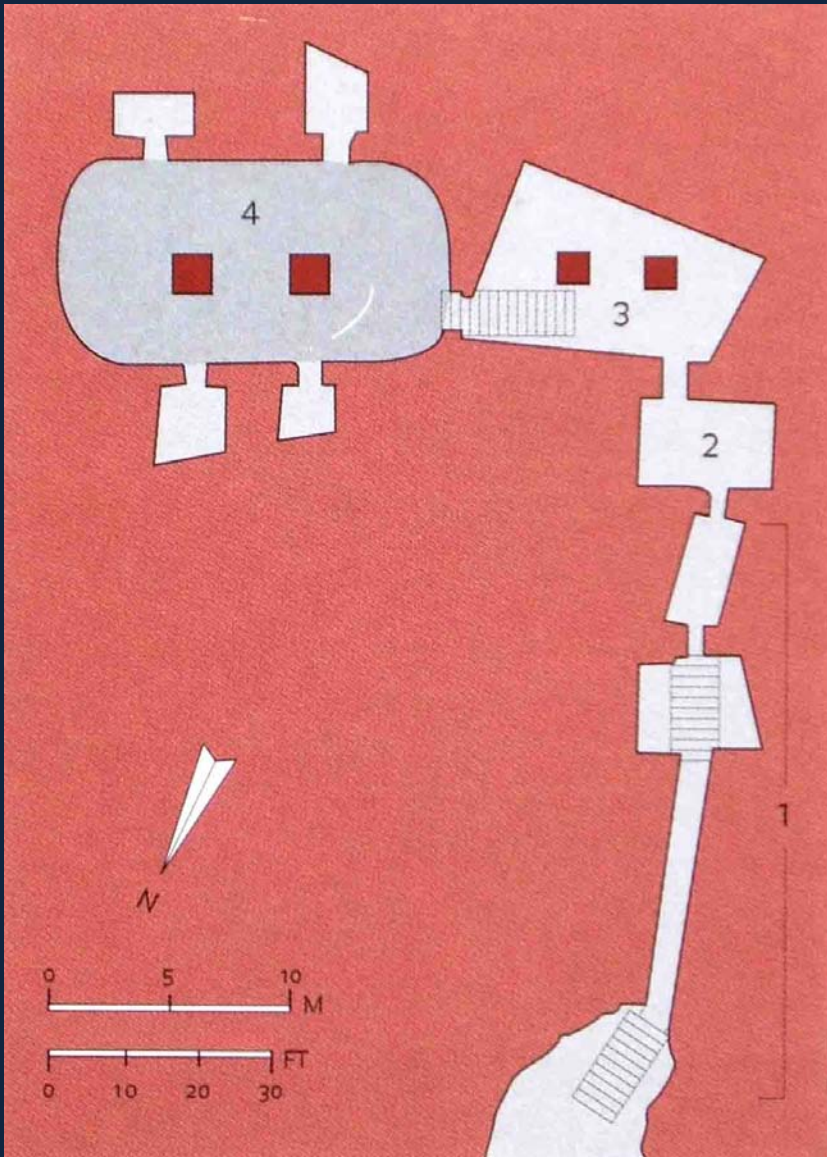
Ramesses II only built the pylon and the first court. A change in the direction of the axis indicates their later construction. The colonnade, second court, columned hall and innermost temple rooms were built in the time of Amenhotep III as the "harem" of Amun. This was the place to which Amun came from Karnak once a year to celebrate his divine marriage.

1. Outer court with obelisks and colossal statues
2. Pylon
3. Court of Ramesses III
4. Temple of Tuthmosis III
5. Colonnade of Amenophis III
6. Court of Amenophis III
7. Columned hall
8. Sanctuary of the barque
9. Inner sanctuary

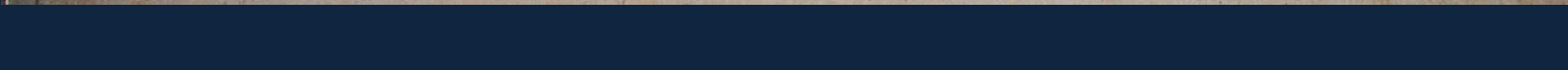


Thutmose III as a warrior



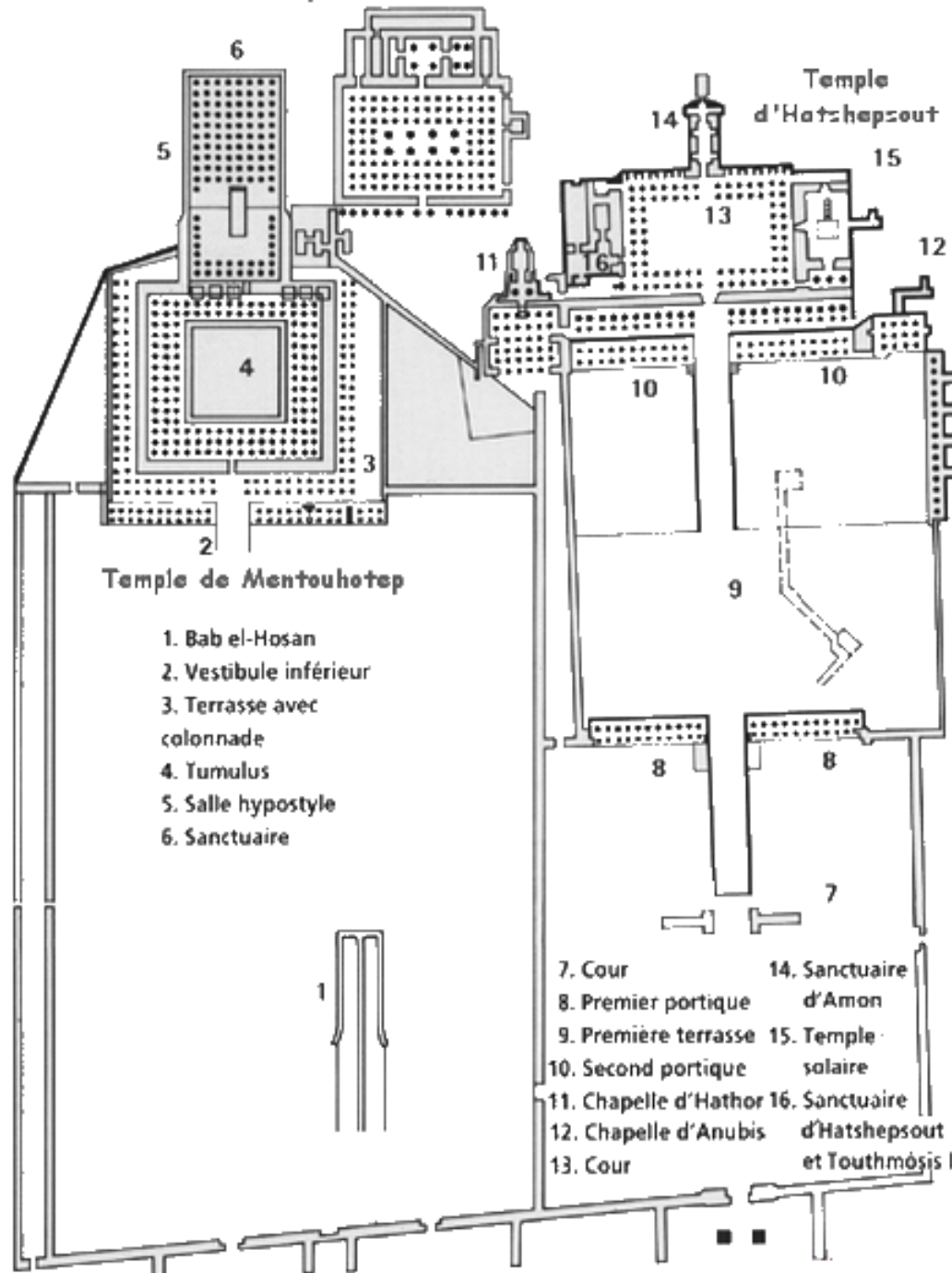


Tomb of Thutmose III in the Valley of the Kings (and the head of it's original occupant, found in one of the mummy caches)

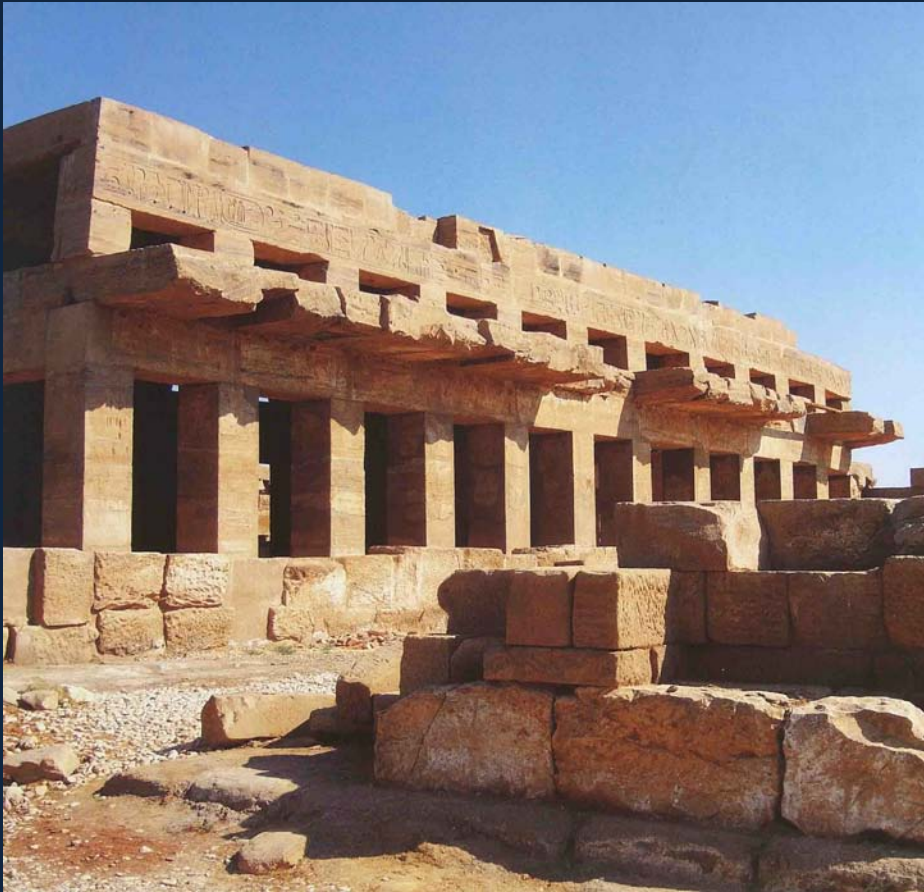




Temple de Thoutmôsis III



Thutmose III at Karnak



The military position of Egypt in the early 18th Dynasty





Late reign of Thutmose III,
changing attitudes to Mitanni?

3 foreign wives indicate new level
of diplomacy?



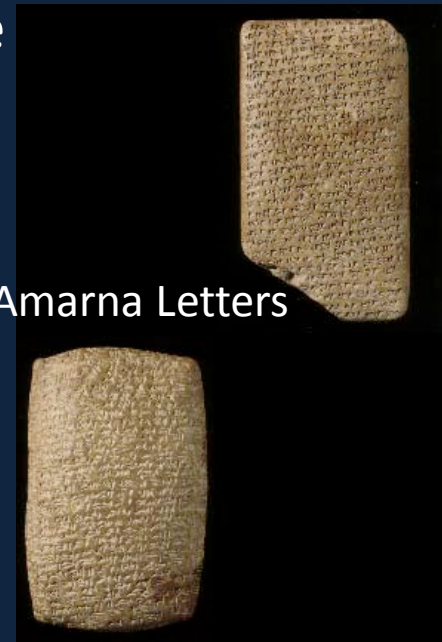
Amenhotep II, Thutmosis IV, Amenhotep III: managing an Empire – the military/diplomatic aspects

- No written treaties are attested for 18D, but some correspondence (late: Amarna letters)
- Exchange of gifts and envoys
- Diplomatic marriages (Amenhotep III to Gilu-Hepa)
- Royal children raised in Egyptian court
- Egyptian garrisons and officials in Syria-Palestine
- Vassal states send tribute



Marriage scarab of
Amenhotep III

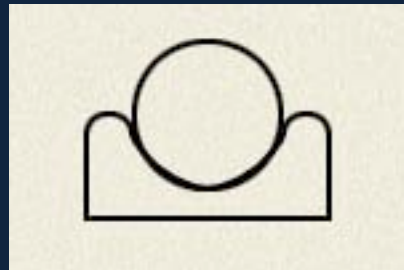
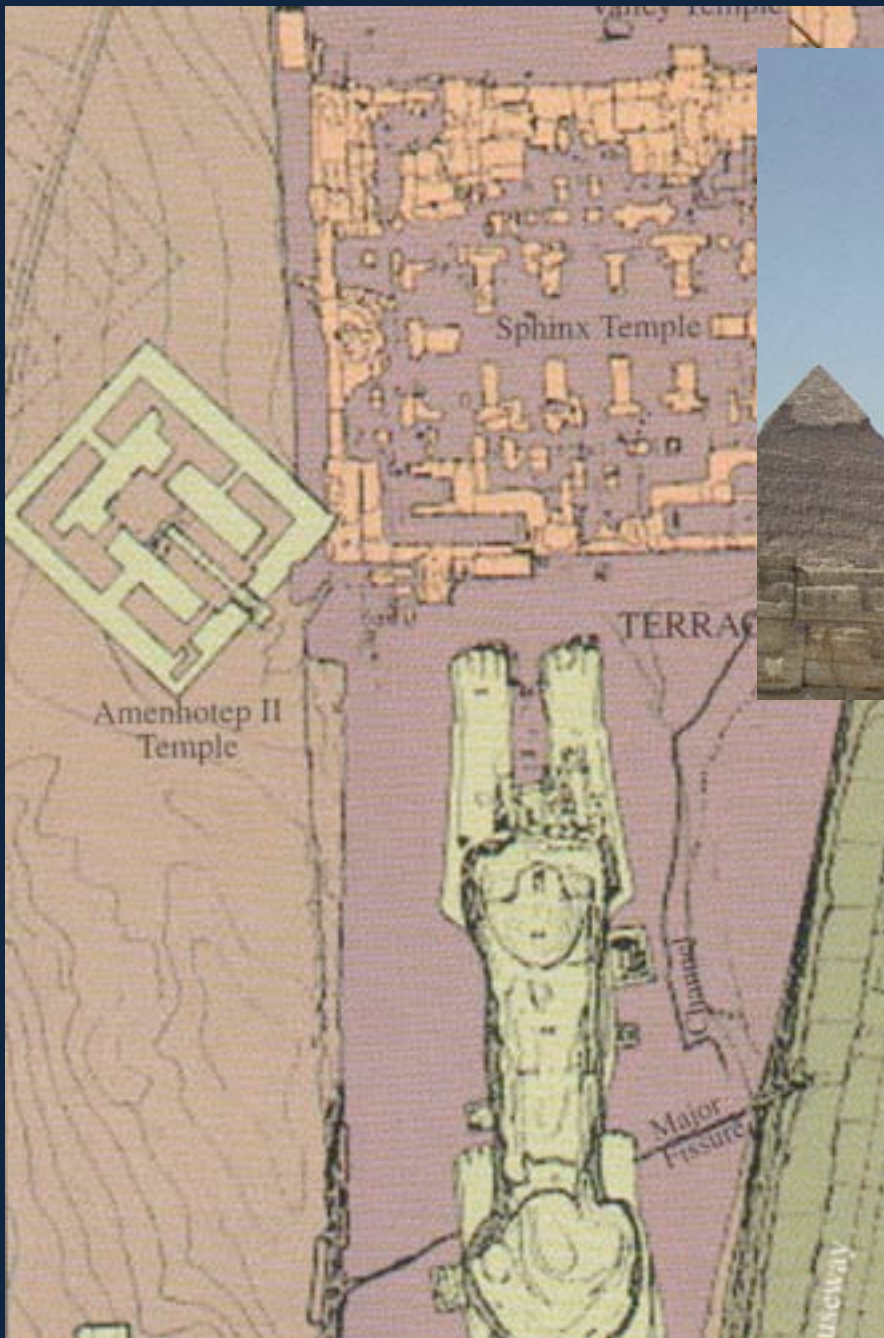
The Amarna Letters



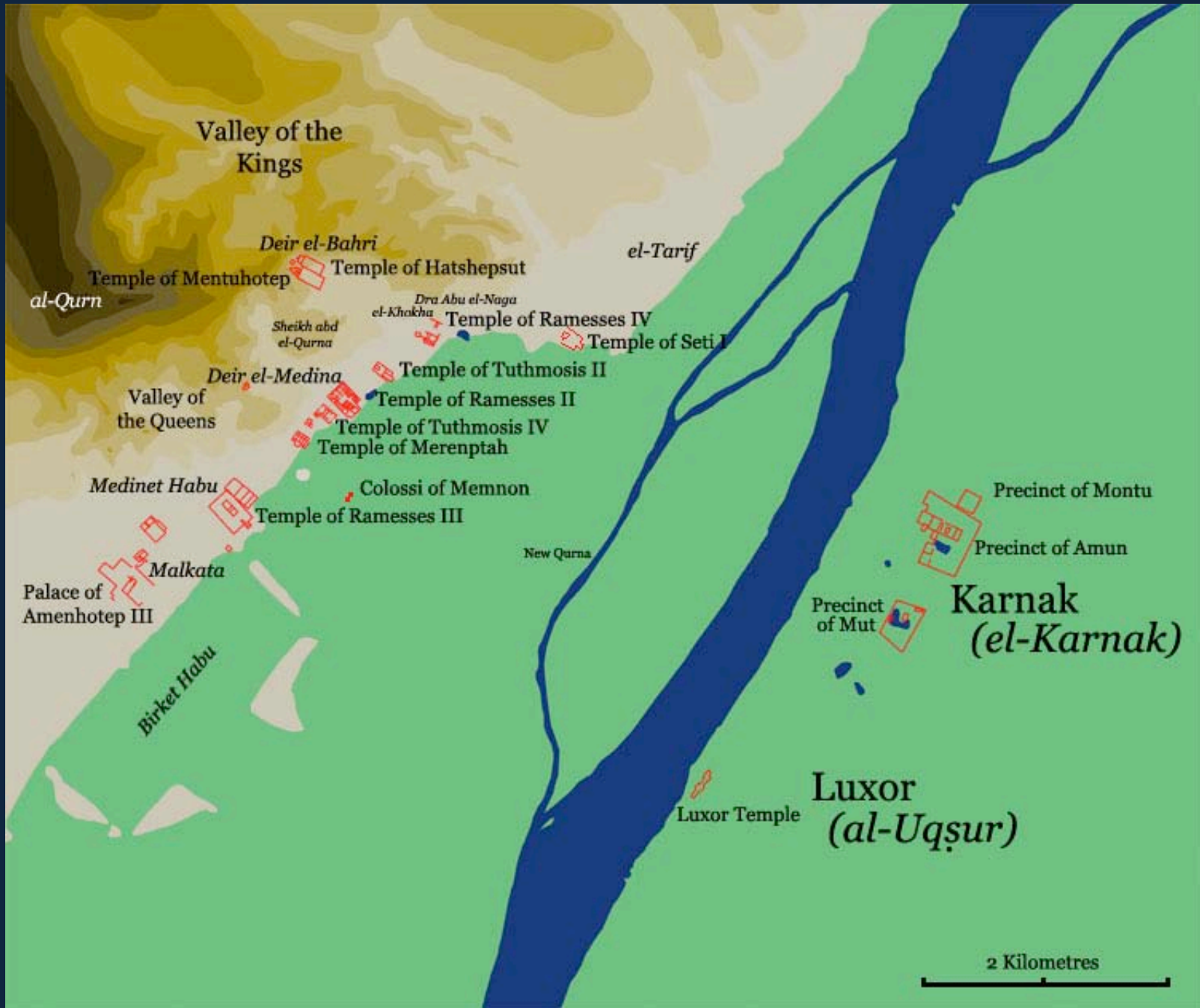


Amenhotep II





Amenhotep II temple to Hor-em-akhet (Horus in the horizon: the sphinx)



Valley of the Kings

Deir el-Bahri

Temple of Mentuhotep

al-Qurn

Temple of Hatshepsut

el-Tarif

Dra Abu el-Naga
el-Khakha

Temple of Ramesses IV

Temple of Seti I

Sheikh abd
el-Qurna

Deir el-Medina

Temple of Tuthmosis II

Valley of the Queens

Temple of Ramesses II

Temple of Tuthmosis IV
Temple of Merenptah

Medinet Habu

Colossi of Memnon

Temple of Ramesses III

New Qurna

Precinct of Montu

Precinct of Amun

Karnak
(el-Karnak)

Precinct of Mut

Palace of Amenhotep III

Malkata

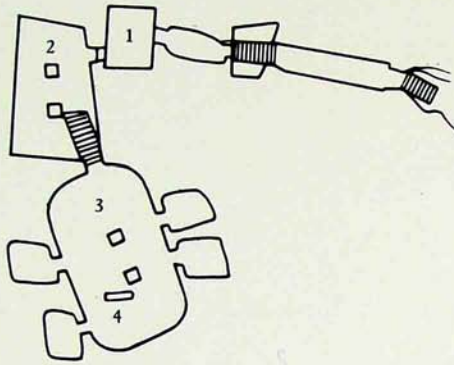
Birket Habu

Luxor
(al-Uqşur)

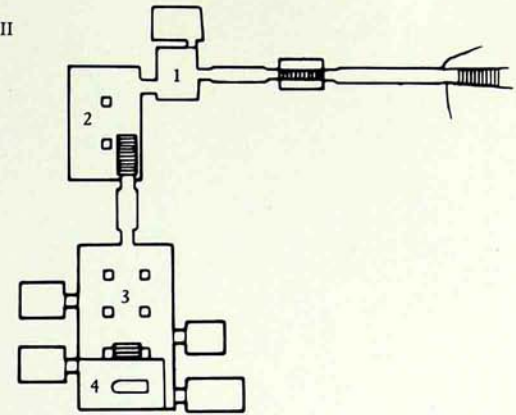
Luxor Temple

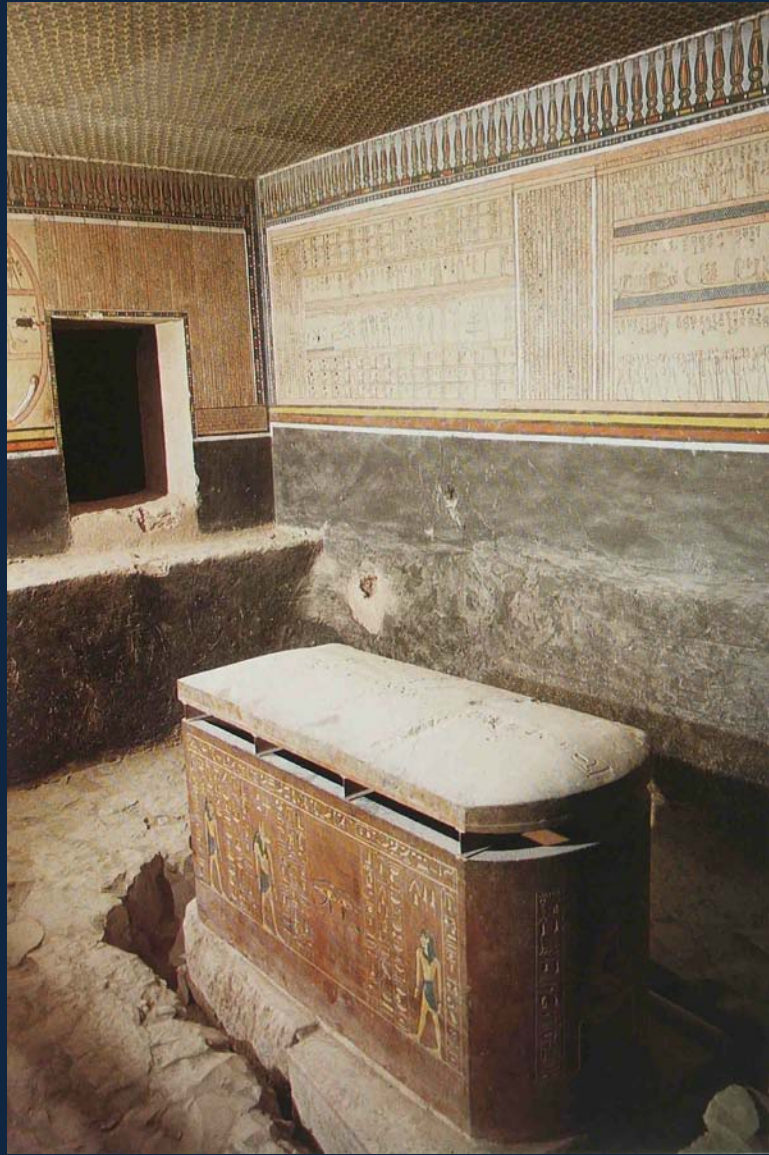
2 Kilometres

A Thutmosis III



A Amenophis II

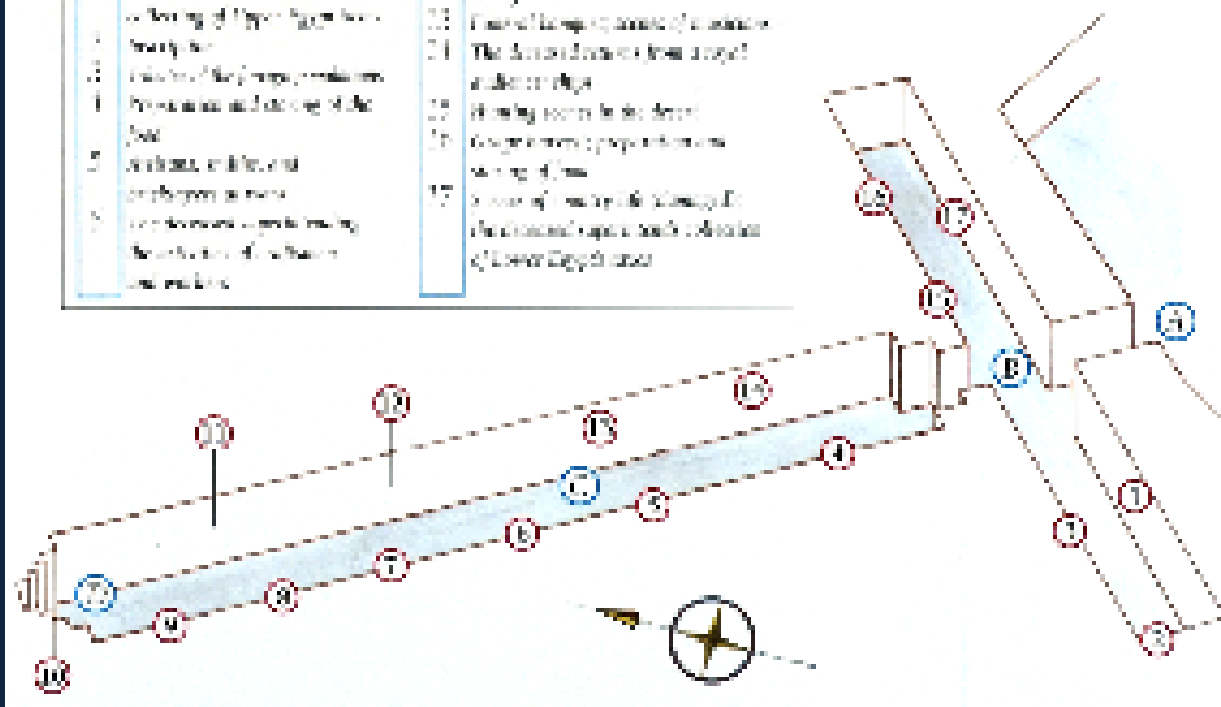






Bringing of foreign tribute, tomb of Rekhmire (vizier of Thutmose III and Amenhotep II)

| LEGEND | |
|-------------|--|
| A | Vertical columnar |
| B | Horizontal columnar |
| C | Vertical |
| D | Other |
| MAIN SCENES | |
| 1 | The deceased is surrounded by a family of Upper Egypt (his family) |
| 2 | Family of the deceased (his wife, his children and his wife of the dead) |
| 3 | Animals, birds and other figures in the tomb |
| 4 | Two deceased people (his wife and his children) |
| 5 | Female figures |
| 6 | Male figures (his wife, his children) |
| 7 | Animals, birds and other figures in the tomb |
| 8 | Two deceased people (his wife and his children) |
| 9 | Female figures |
| 10 | Male figures (his wife, his children) |
| 11 | Animals, birds and other figures in the tomb |
| 12 | Two deceased people (his wife and his children) |
| 13 | Female figures |
| 14 | Male figures (his wife, his children) |
| 15 | Animals, birds and other figures in the tomb |
| 16 | Two deceased people (his wife and his children) |
| 17 | Female figures |
| 18 | Male figures (his wife, his children) |
| 19 | Animals, birds and other figures in the tomb |
| 20 | Two deceased people (his wife and his children) |
| 21 | Female figures |
| 22 | Male figures (his wife, his children) |
| 23 | Animals, birds and other figures in the tomb |
| 24 | Two deceased people (his wife and his children) |
| 25 | Female figures |
| 26 | Male figures (his wife, his children) |
| 27 | Animals, birds and other figures in the tomb |
| 28 | Two deceased people (his wife and his children) |
| 29 | Female figures |
| 30 | Male figures (his wife, his children) |
| 31 | Animals, birds and other figures in the tomb |
| 32 | Two deceased people (his wife and his children) |
| 33 | Female figures |
| 34 | Male figures (his wife, his children) |
| 35 | Animals, birds and other figures in the tomb |
| 36 | Two deceased people (his wife and his children) |
| 37 | Female figures |
| 38 | Male figures (his wife, his children) |
| 39 | Animals, birds and other figures in the tomb |
| 40 | Two deceased people (his wife and his children) |
| 41 | Female figures |
| 42 | Male figures (his wife, his children) |
| 43 | Animals, birds and other figures in the tomb |
| 44 | Two deceased people (his wife and his children) |
| 45 | Female figures |
| 46 | Male figures (his wife, his children) |
| 47 | Animals, birds and other figures in the tomb |
| 48 | Two deceased people (his wife and his children) |
| 49 | Female figures |
| 50 | Male figures (his wife, his children) |

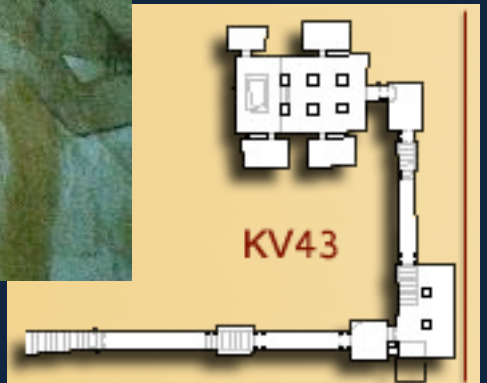
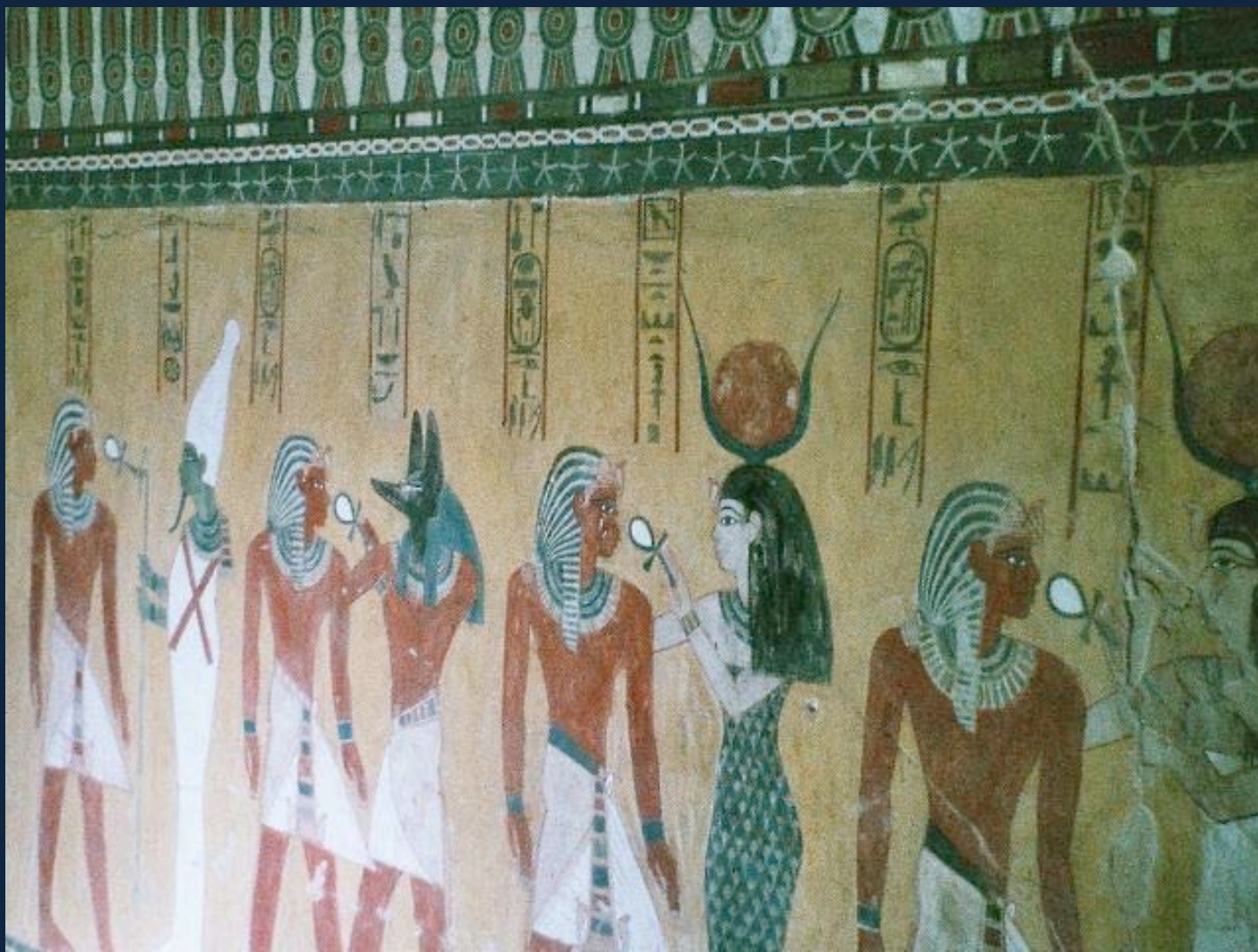


Tomb of Rekhmire

Thutmose IV: Building Program



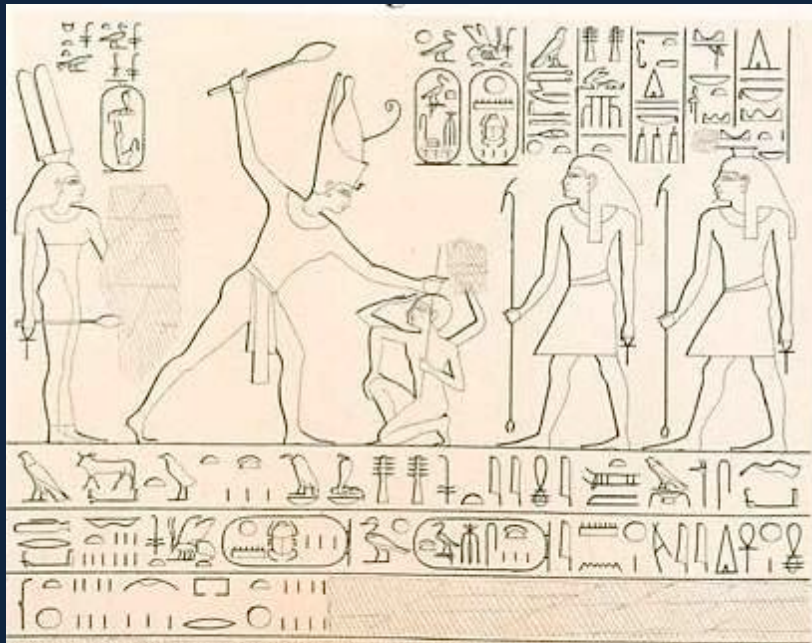
"Dream Stela" of Thutmose IV



Tomb of Thutmose IV

From the tomb of Sobekhotep (TT 63)
Reign of Thutmose IV





Royal women of Thutmose IV: not emphasized during his reign
Left: Iaret (great royal wife) from a Nubian temple
Below: Mutemwiya, mother of Amenhotep III, from the birth scene she later had carved at Luxor Temple

c

